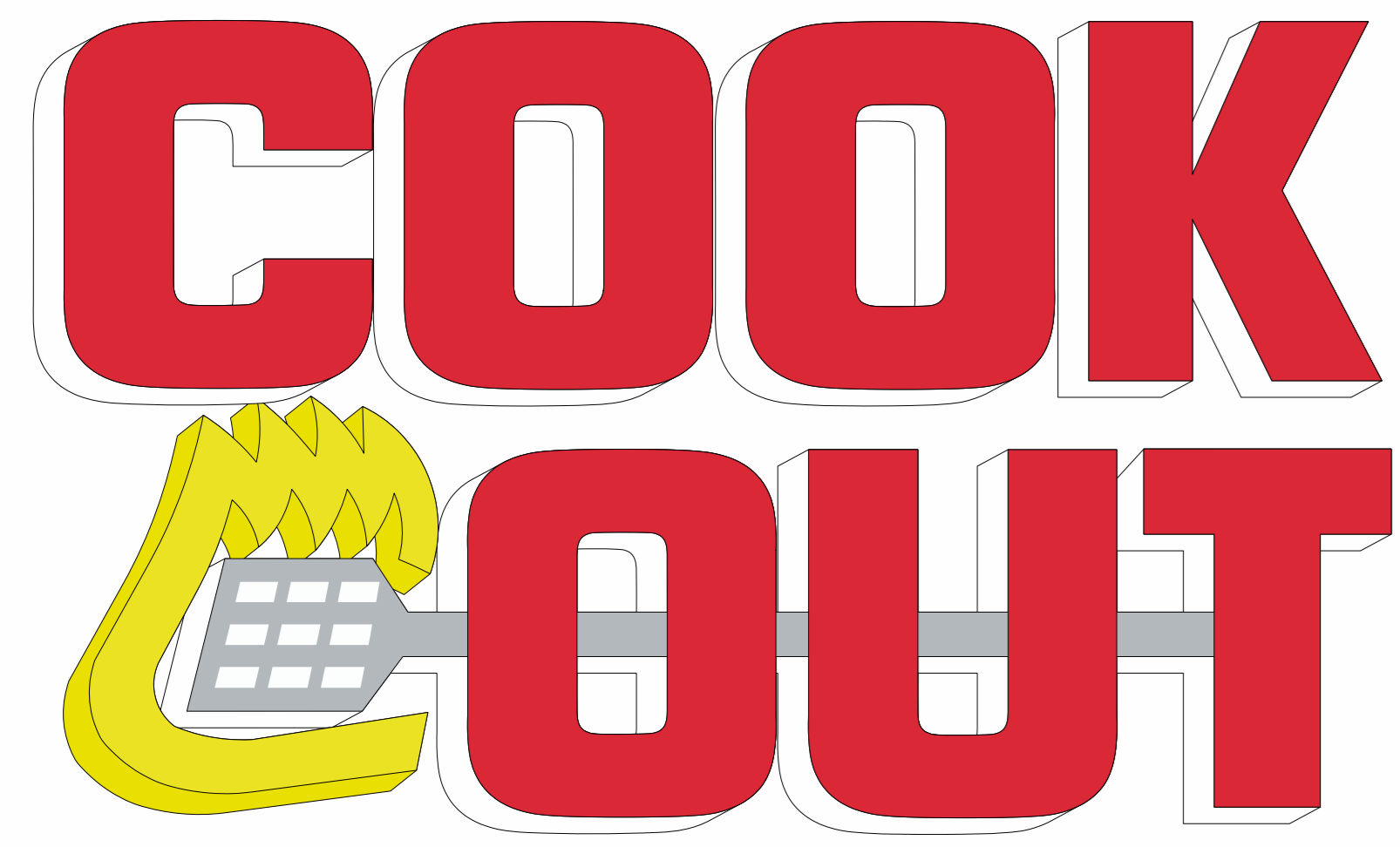


# Collinsville, VA Cook Out

## A Front



- 5' x 8' **40 Sq Ft** LED lighted Channel Letter Logo / Individually mounted

## B Back



- 2' x 10' **20 Sq Ft** LED lighted Channel Letter Logo / Individually mounted

## C Parking Lot side & D Drive Thru side

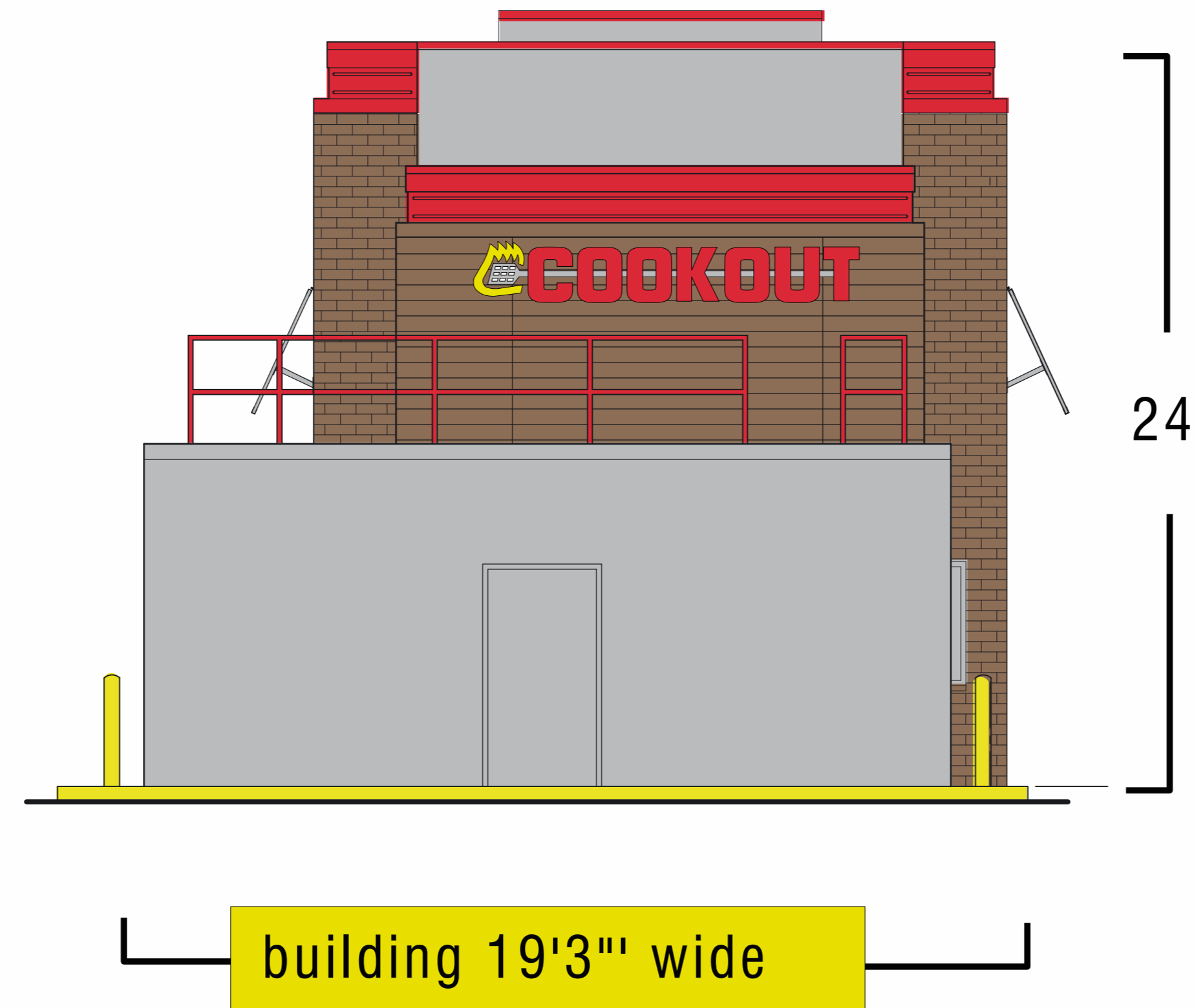


- 5' x 8' **40 Sq Ft** LED lighted Channel Letter Logo / Individually mounted

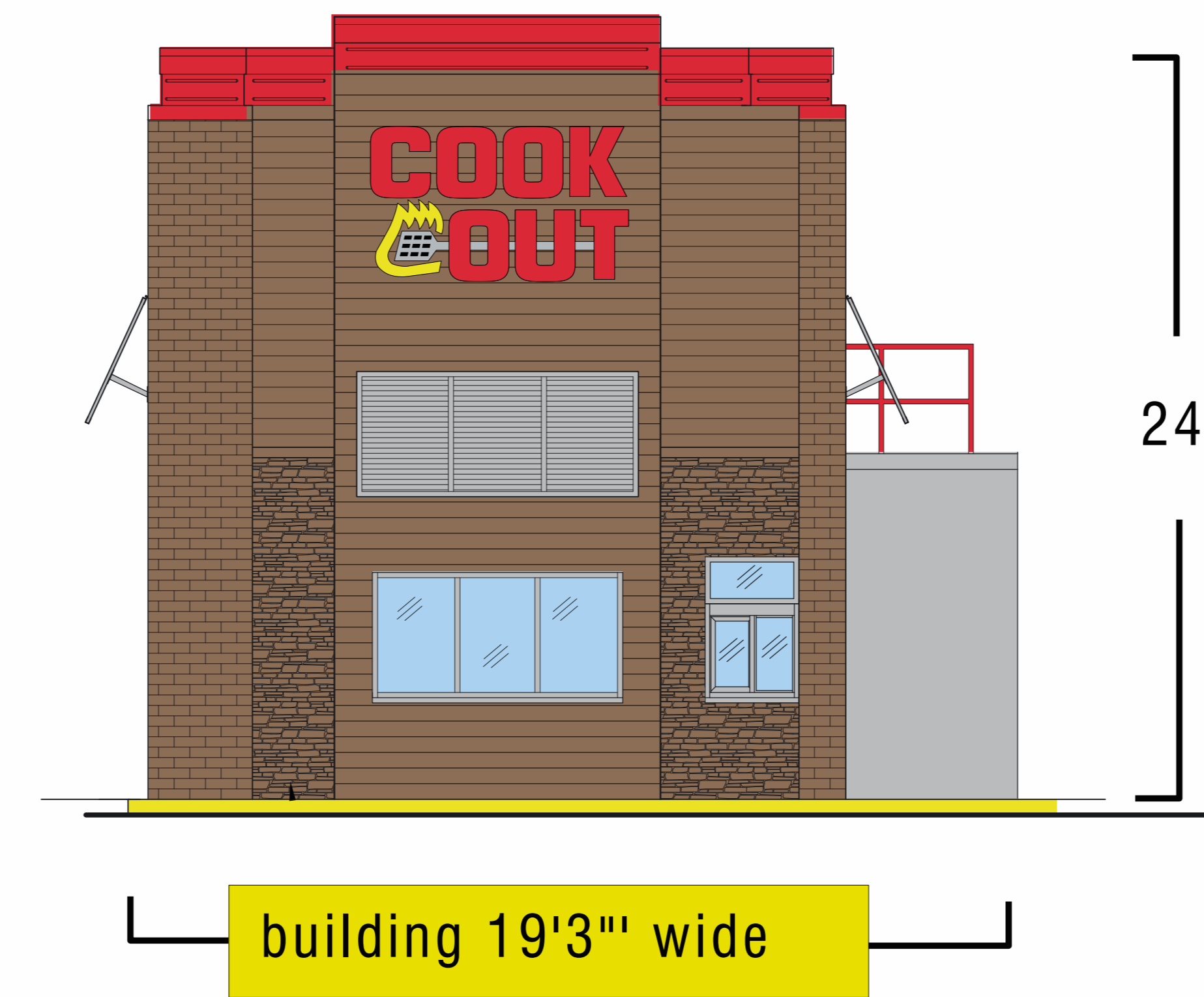


- 1.5' x 26.5' **39.75 Sq Ft** LED lighted Channel Letter Tag Line / Race-way mounted

## B Back

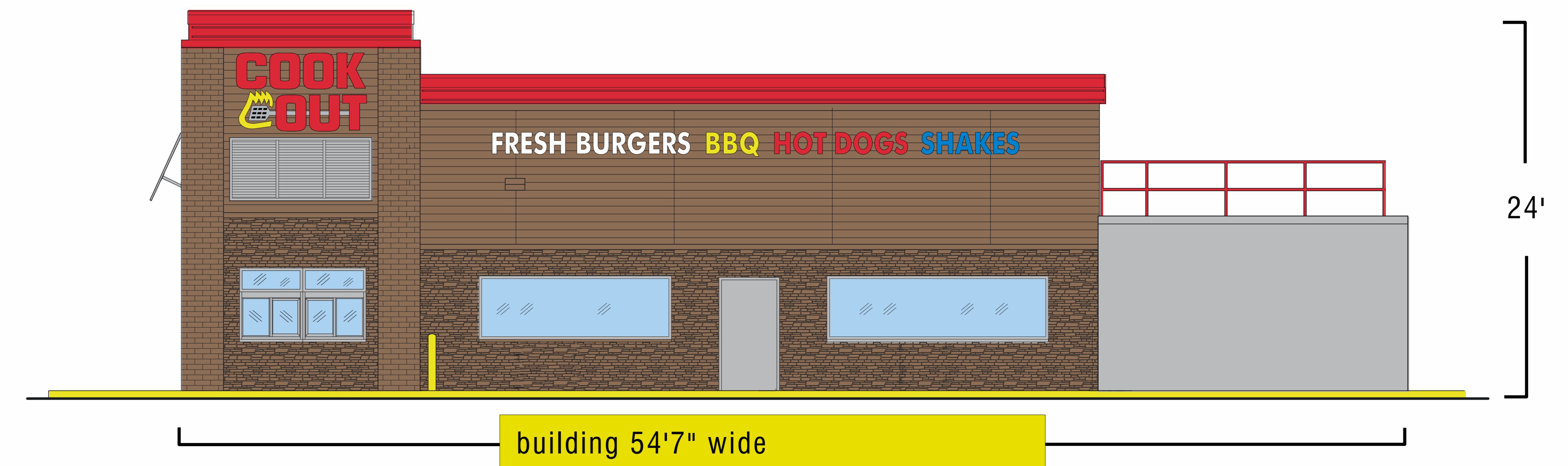


## A Front

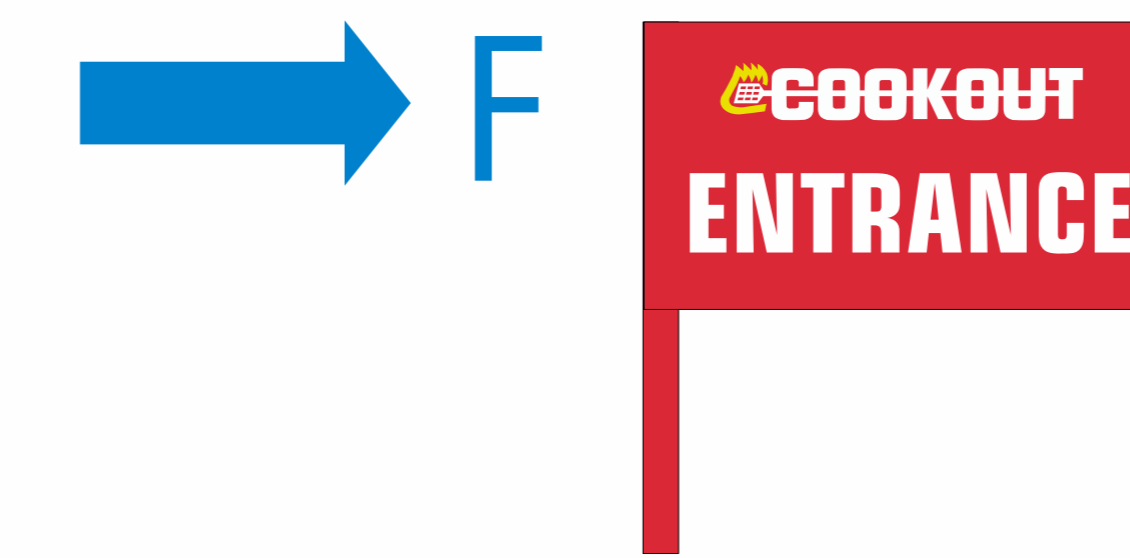
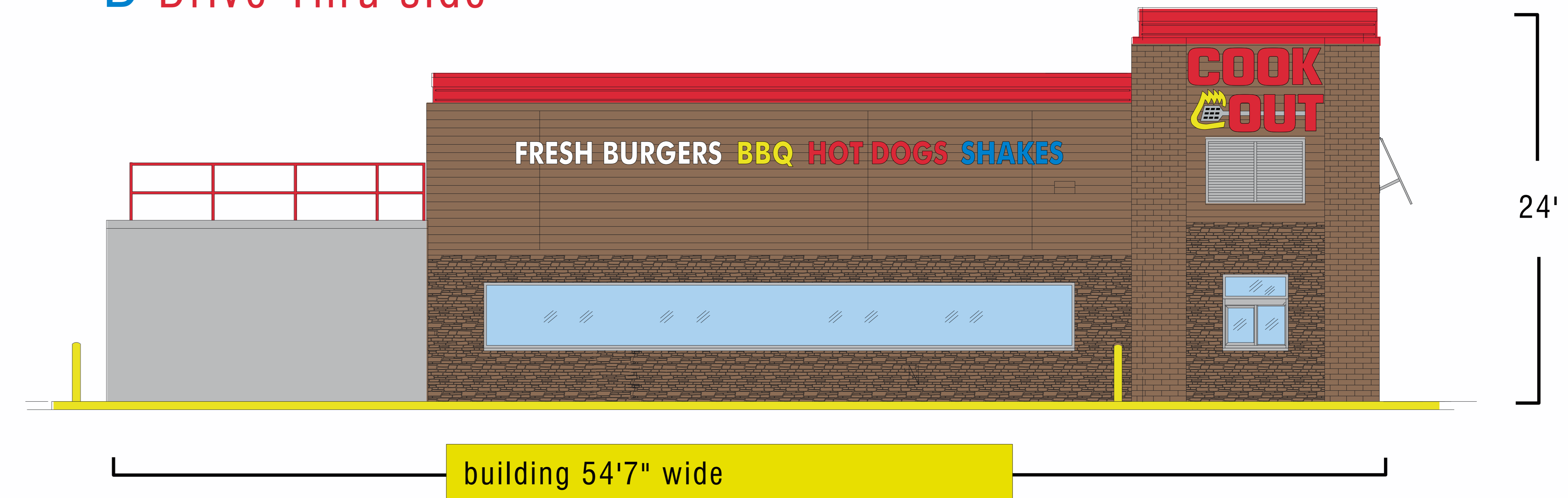


**E** ( 500' ) of red neon around the top edge of building

## C Parking Lot side



## D Drive Thru side

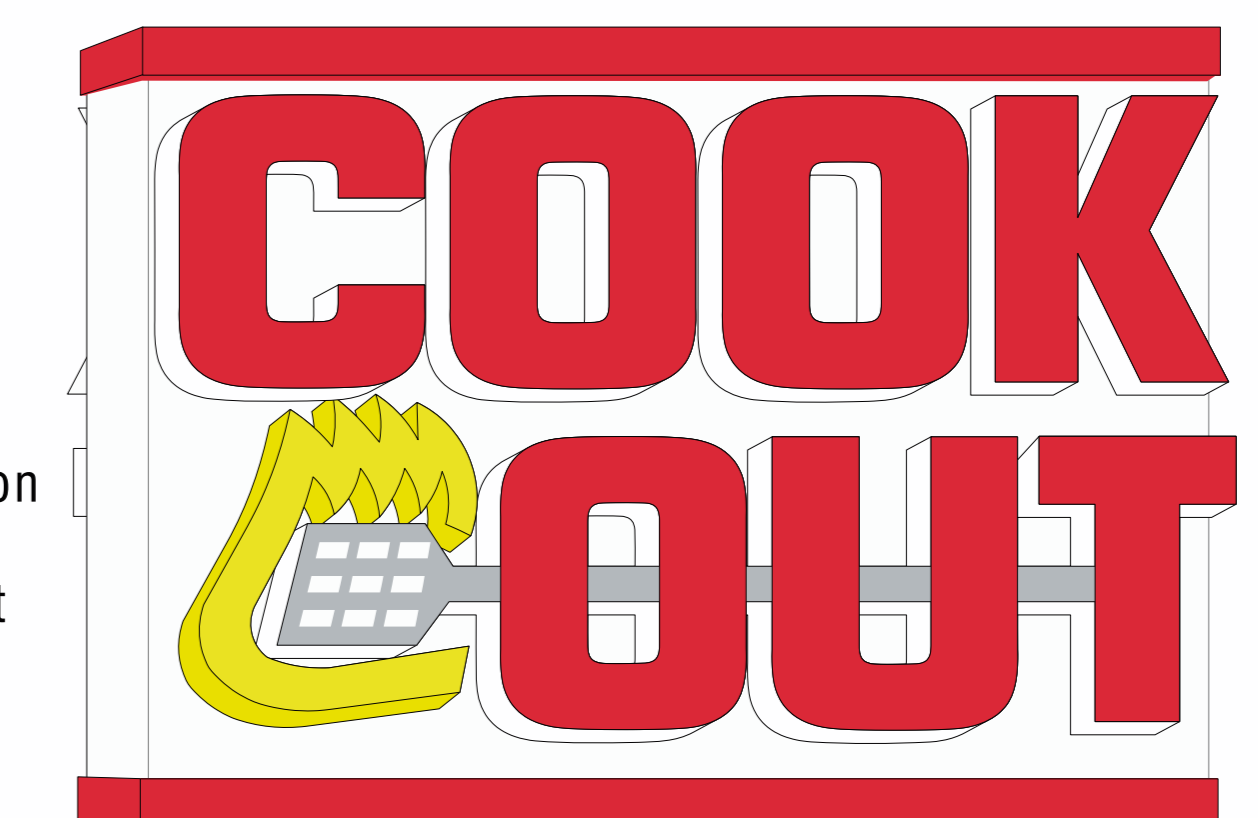


( 2 ) entrance signs  
( 2 ) drive thru directional signs

Total sq ft of this sign - 196

## H

16' x 9"  
Double sided pylon  
- powder coated aluminum cabinet  
- LED lighted channel letters



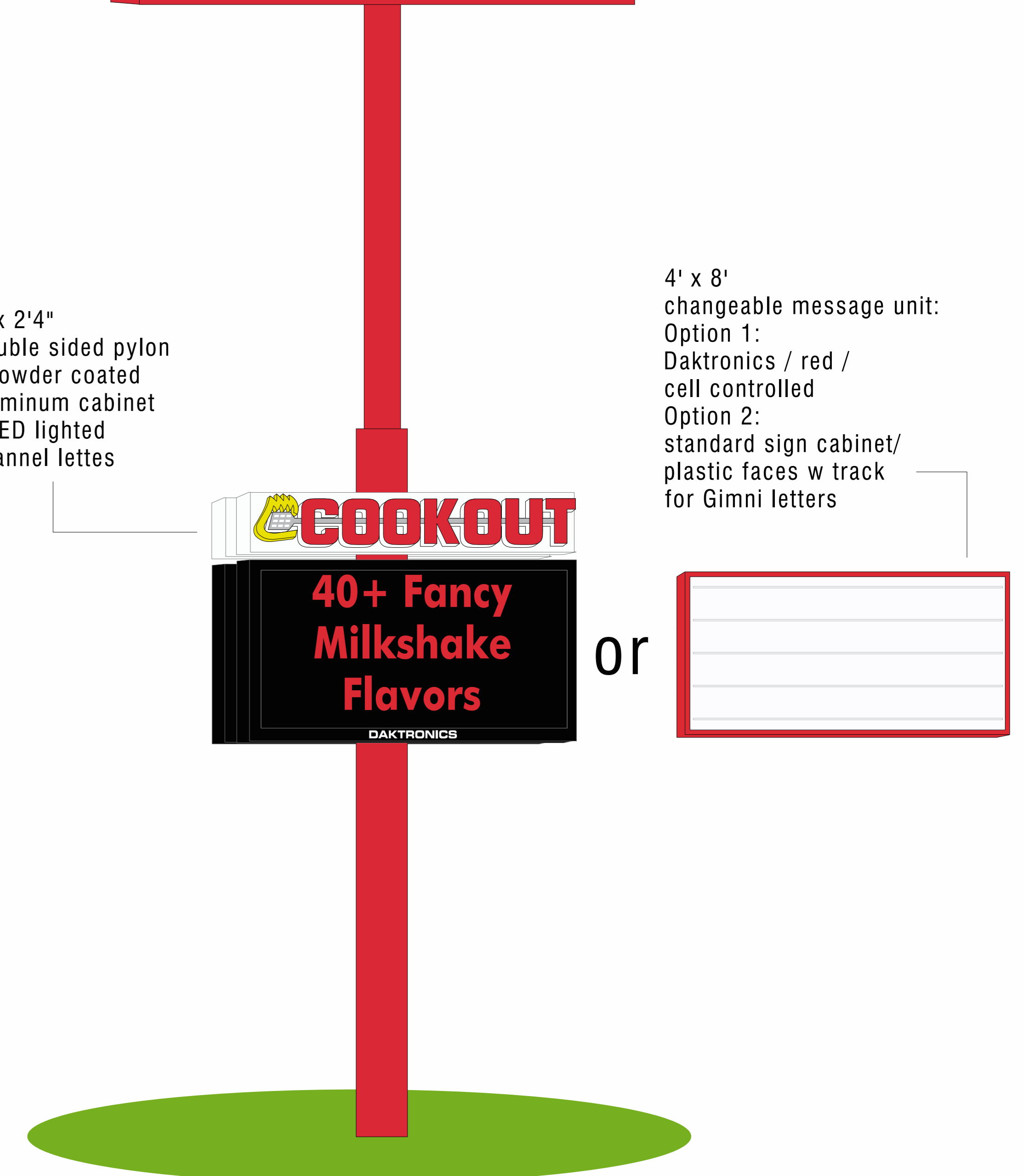
## G



( 3 ) Free standing menu units  
- ( 2 ) for Drive thrus  
- ( 1 ) for walk - up

8' x 2'4"  
Double sided pylon  
- powder coated aluminum cabinet  
- LED lighted channel letters

4' x 8'  
changeable message unit:  
Option 1:  
Daktronics / red / cell controlled  
Option 2:  
standard sign cabinet/ plastic faces w track for Gimni letters



### Scope of job:

Supply and install all of the below:

( 1 ) building front wall logo sign	( 1 ) free standing pylon sign
( 1 ) building back wall logo sign	( 3 ) menus ( 2 ) drive thru ( 1 ) walk-up
( 2 ) building side wall logo signs	( 2 ) entrance signs
w/ tag lines on each right and left wall	( 2 ) drive thru directional signs
	( 500' ) of red border neon



803-533-7446  
313 John C Calhoun Drive  
Orangeburg SC 29115  
Linford Oberholtzer  
lin@brandritesign.com  
Mobile 803-707-4512