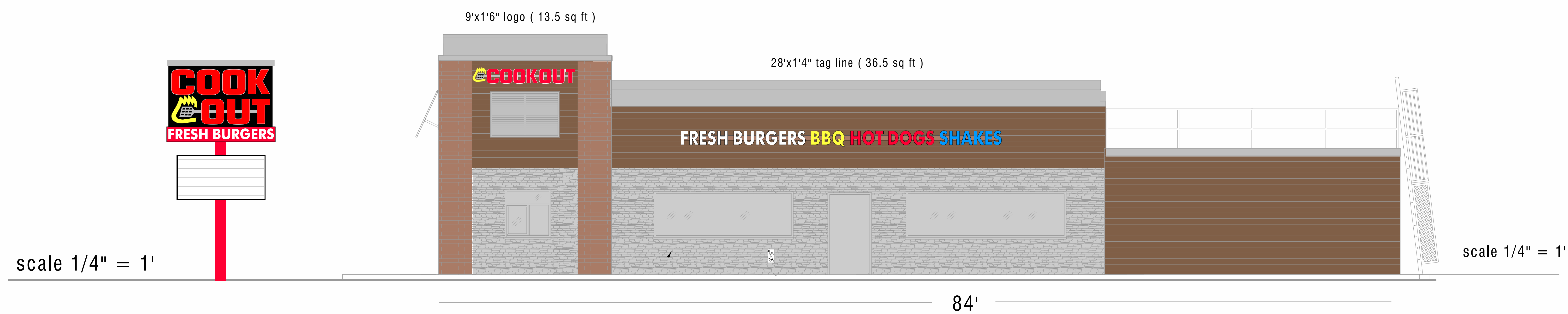
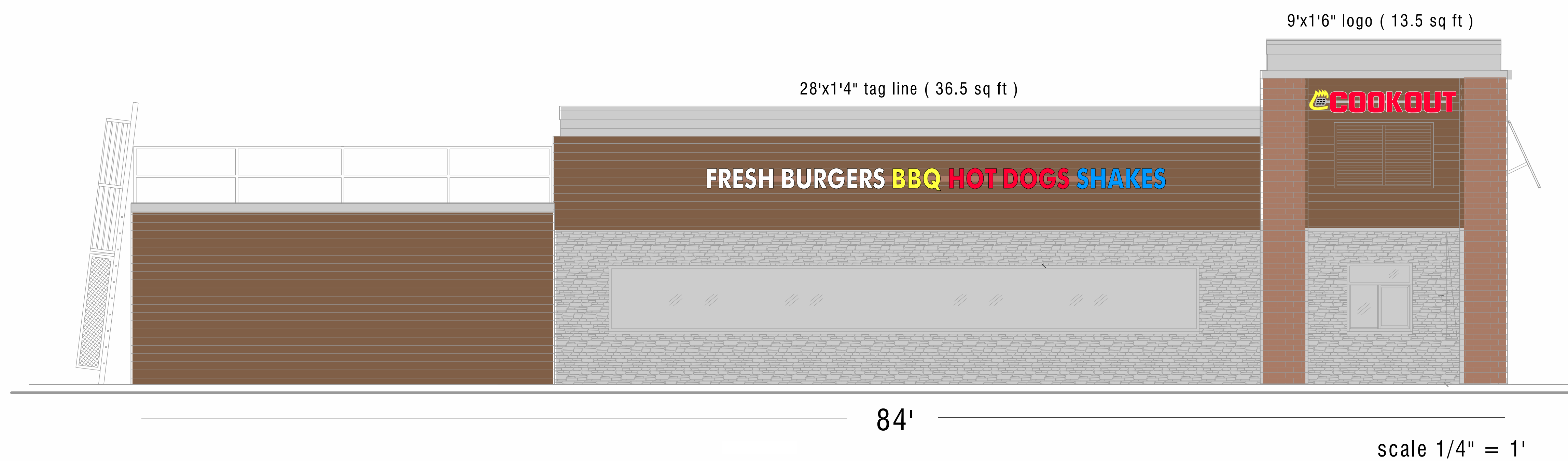
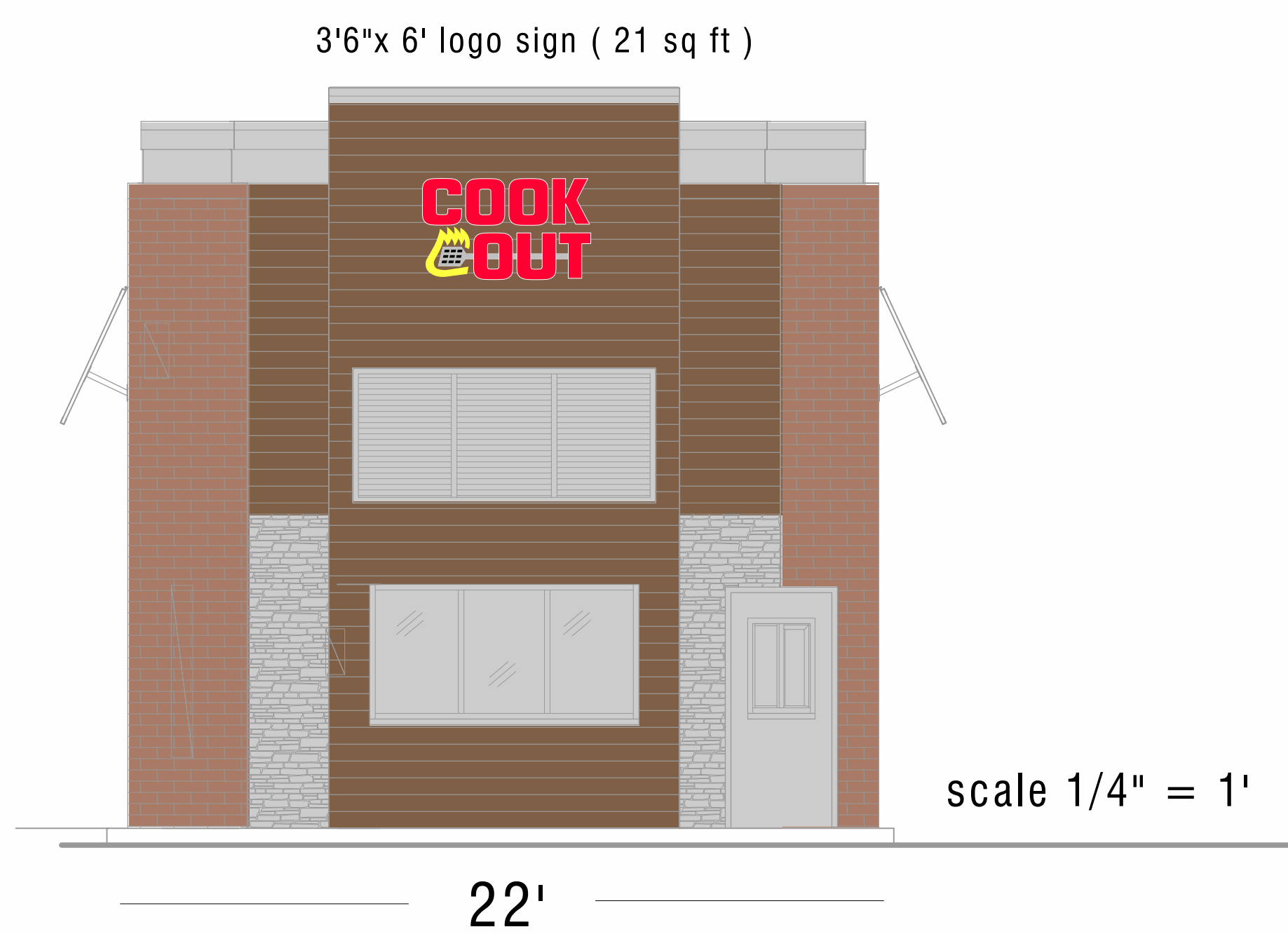


# Walterboro SC Cook Out sign drawings



## Building wall Signs:

- LED lighted, UL listed channel letters

**FRESH BURGERS BBQ HOT DOGS SHAKES**

( 2 ) Tag lines / both sides of building / powder-coated aluminum race-ways

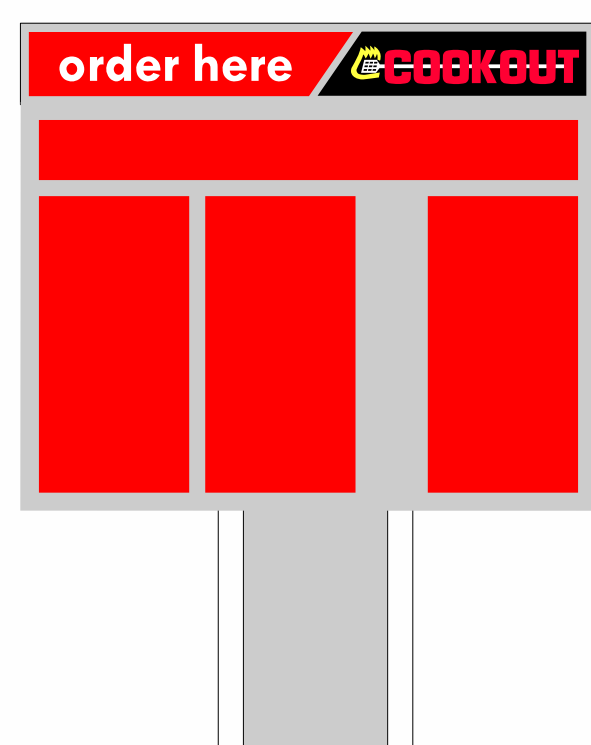


( 2 ) Long logo signs / both sides of building



( 1 ) Stacked logo sign / front of building

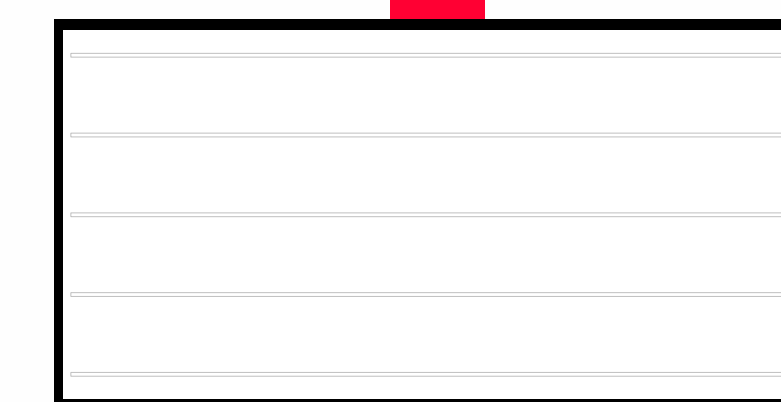
- ( 3 ) menus:
- ( 1 ) walk-up and
- ( 2 ) drive thru



## Pylon sign:

- Top sign ( ID ) 9' wide x 6'8" high, powder coated aluminum cabinet with LED lighted channel letters / UL listed and labeled / area behind big logo is powder coated aluminum.
- Changeable message sign 8' wide x 4' high plastic faces / LED lighted / UL listed and labeled
- Over-all height 20' - 92 sq.ft total
- 12" steel pole

Changeable message letters by Gemini



scale 1/2" = 1'

## Scope of job:

Supply and install all of the below:

- ( 1 ) building front wall sign
- ( 2 ) building side wall logo signs
- ( 2 ) building side wall tag lines
- ( 1 ) free standing pylons
- ( 3 ) menus 2 - drive thru 1- walk-up
- ( 2 ) entrance / exit signs
- ( 500' ) of white border neon



**803-533-7446**

313 John C Calhoun Drive  
Orangeburg SC 29115

Linford Oberholtzer  
lin@brandritesign.com  
Mobile 803-707-4512