

Elizabethton TN Cook Out Sign Drawing
509 W. Elk Ave.

A Front



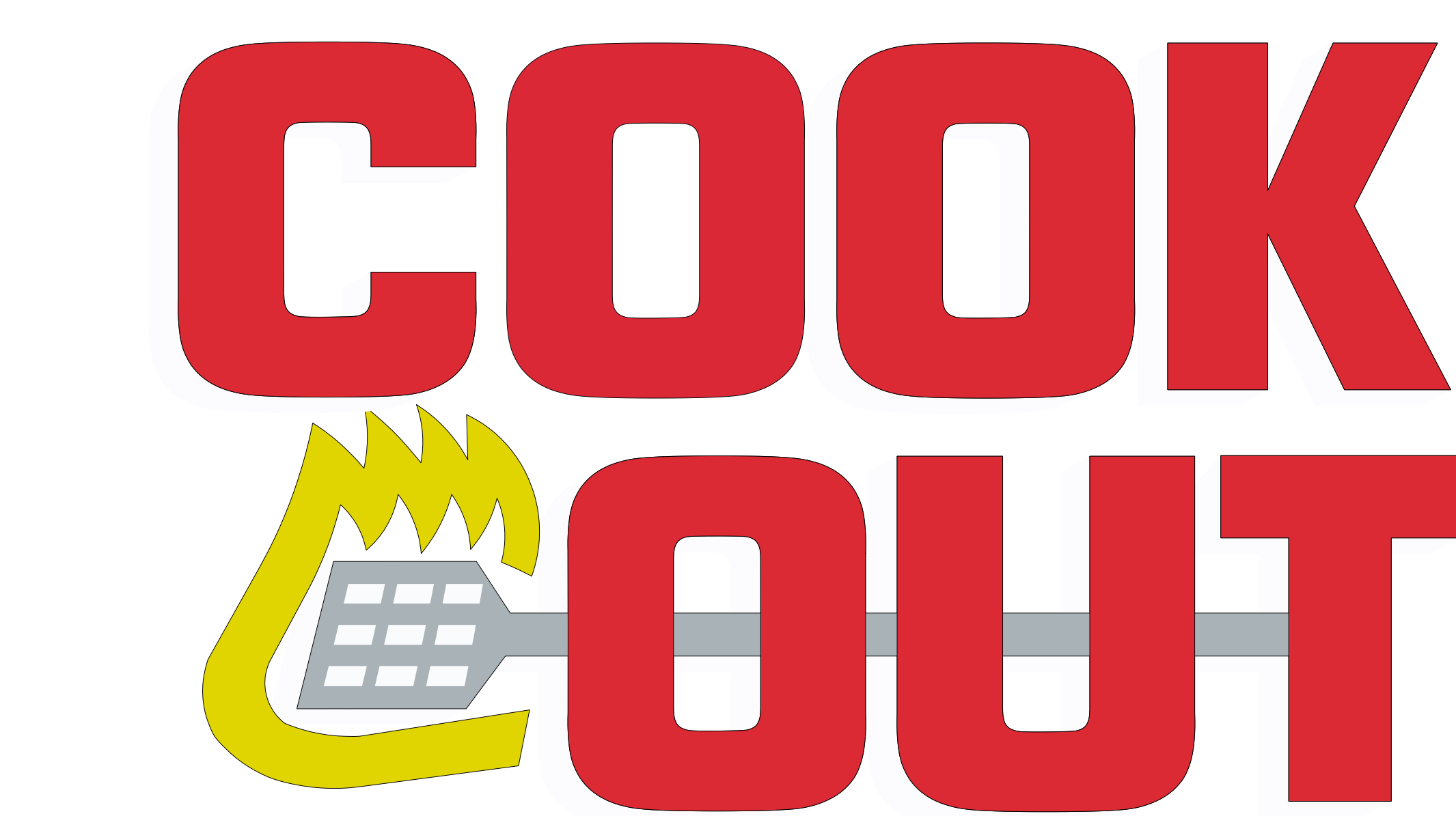
- 3'4" x 21' 70 Sq Ft LED lighted Channel Letter Logo / Individually mounted
- LED lightd (GE Tetra Max)
- UL listed electrical

B Back



- 2'3" x 14' 31.5 Sq Ft LED lighted Channel Letter Logo / Individually mounted
- LED lightd (GE Tetra Max)
- UL listed electrical

C Parking Lot side &
D Drive Thru side



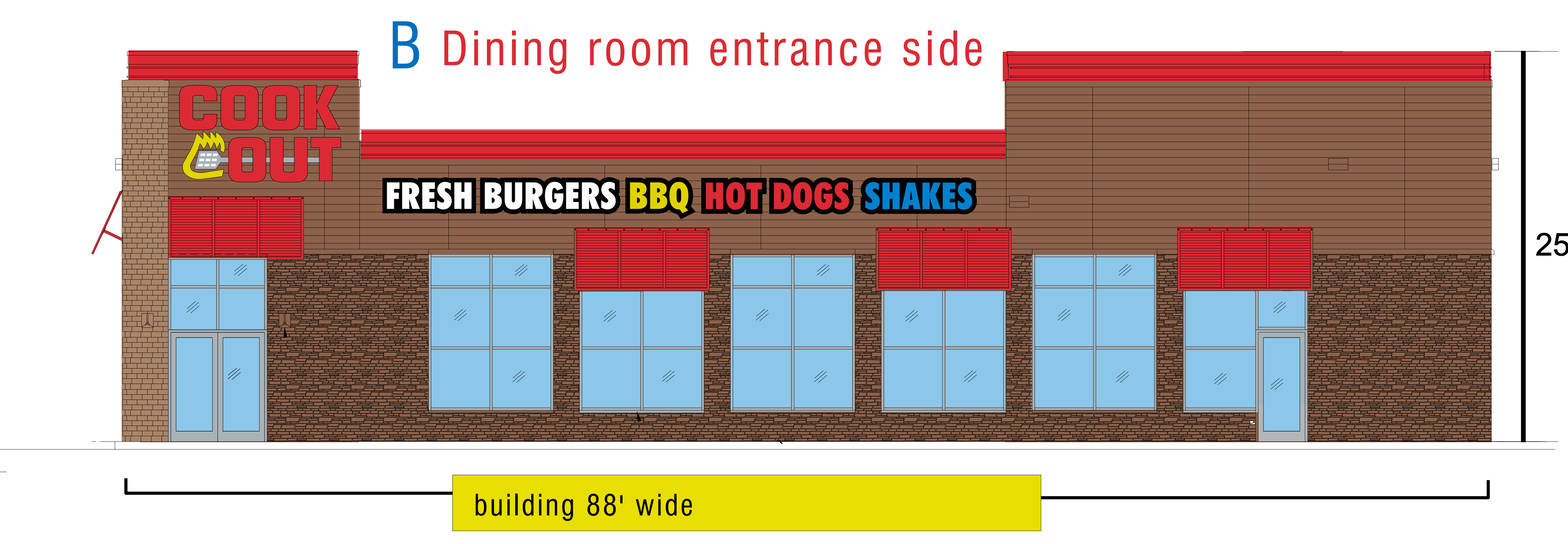
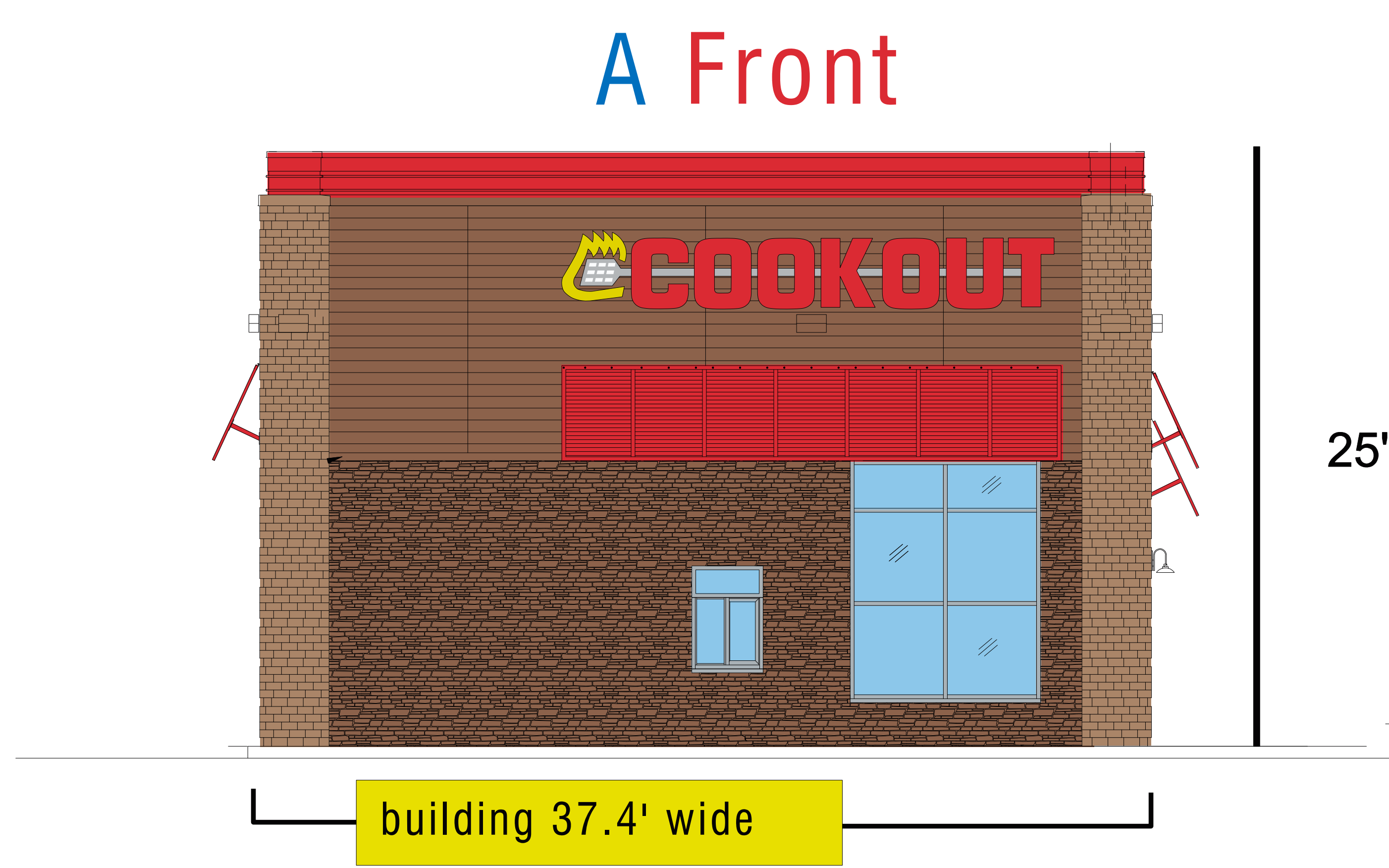
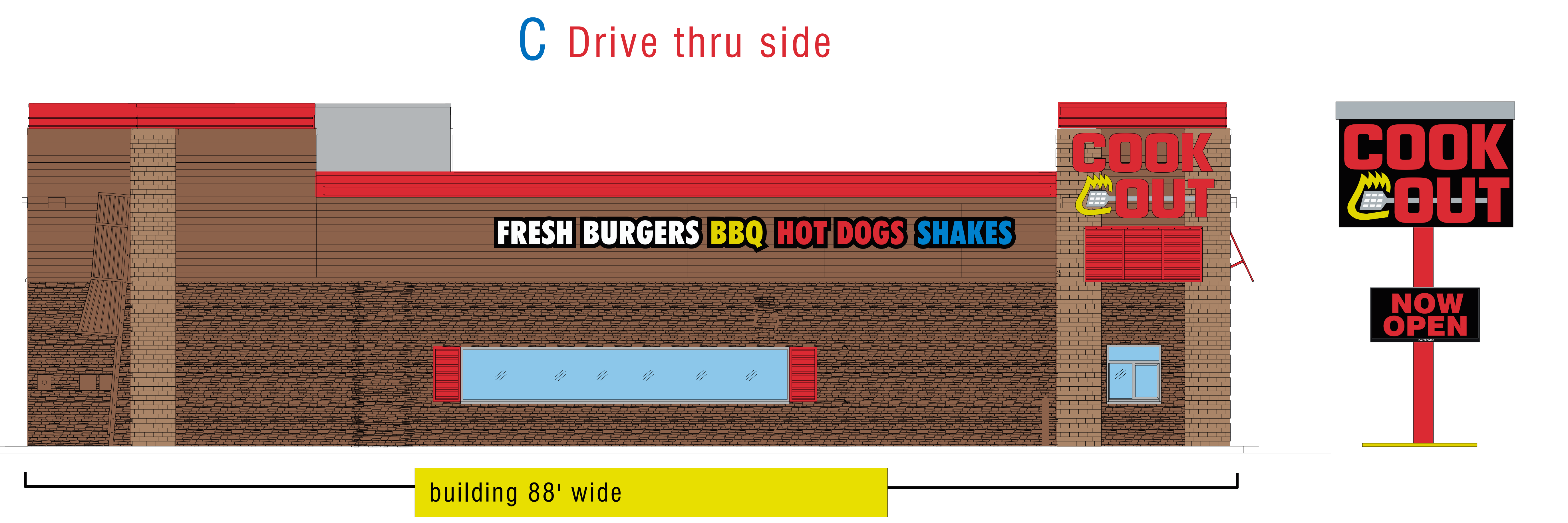
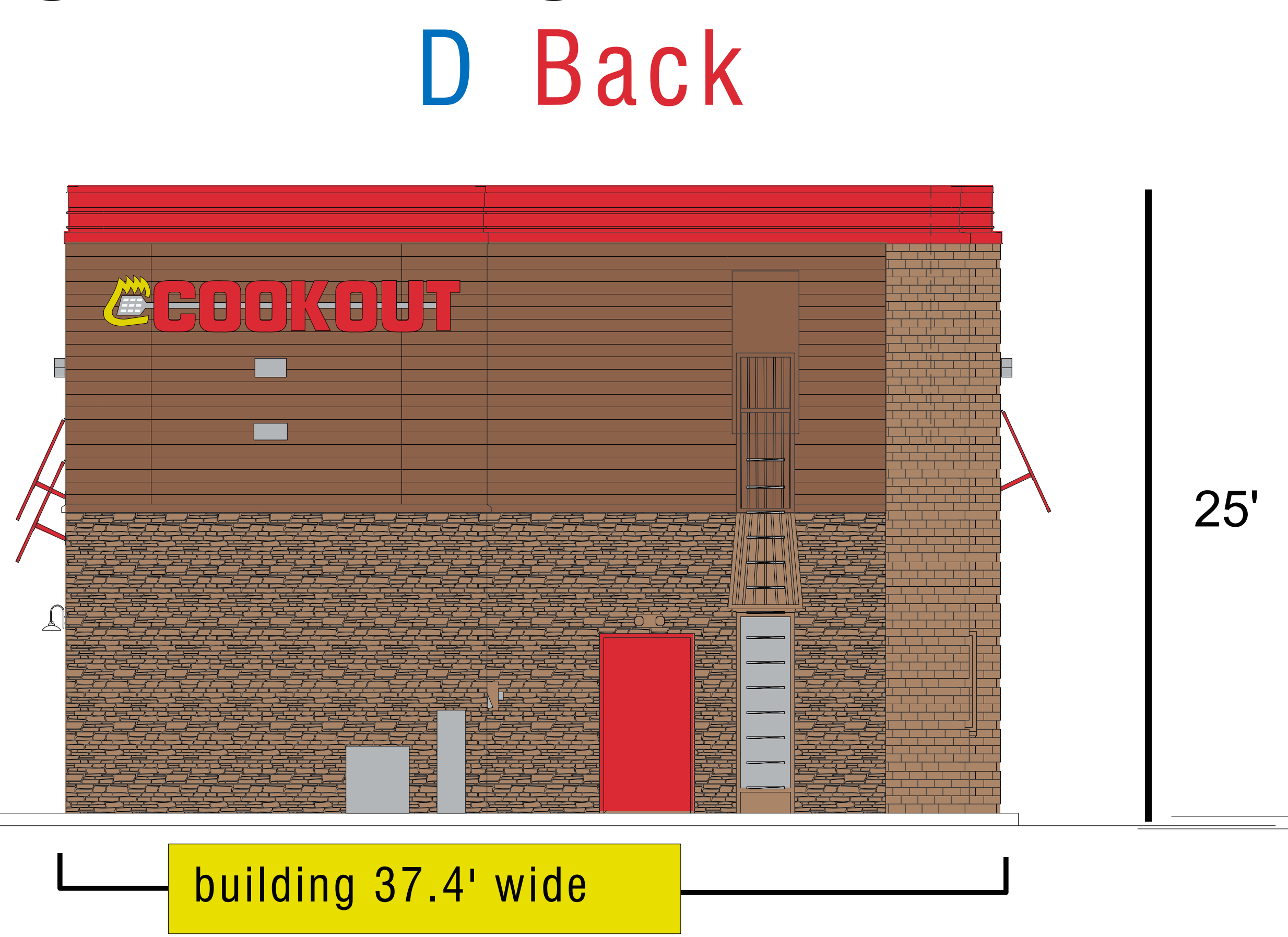
- 2'8" x 38' (101 SQ Ft) Connected channel letter Tag Line
- LED lightd (GE Tetra Max)
- UL listed electrical

Scope of job:
Supply and install all of the below:

(6) building wall logo signs:
- 2 Tag Lines / 4 Logos

(1) free standing pylon style sign
w/ Daktronics message unit

(2) drive-up menus
(5) dining room TVs
(2) entrance signs
(2) drive thru directional signs
(500') of red border neon



E (500') of red neon around the top edge of building

- 6' x 10' 60 Sq Ft LED lighted Channel Letter Logo / Individually mounted
- LED lightd (GE Tetra Max)
- UL listed electrical



- (2) entrance signs
- (2) drive thru directional signs

H

- 9' x 14'5 131 sq ft Double sided pylon
- powder coated aluminum cabinet
- LED lighted channel lettes



- Reader board portion of sign
- Daktronics / full color / 15 mm / cellular / controlled electronic message unit



over-all height 25'

G

- MENUS
- (5) Samsung Smart Signage TVs w 12' raceway (Dining room)
- (2) Front lighted drive up menus



803-533-7446
313 John C Calhoun Drive
Orangeburg SC 29115
Linford Oberholtzer
lin@brandritesign.com
Mobile 803-707-4512