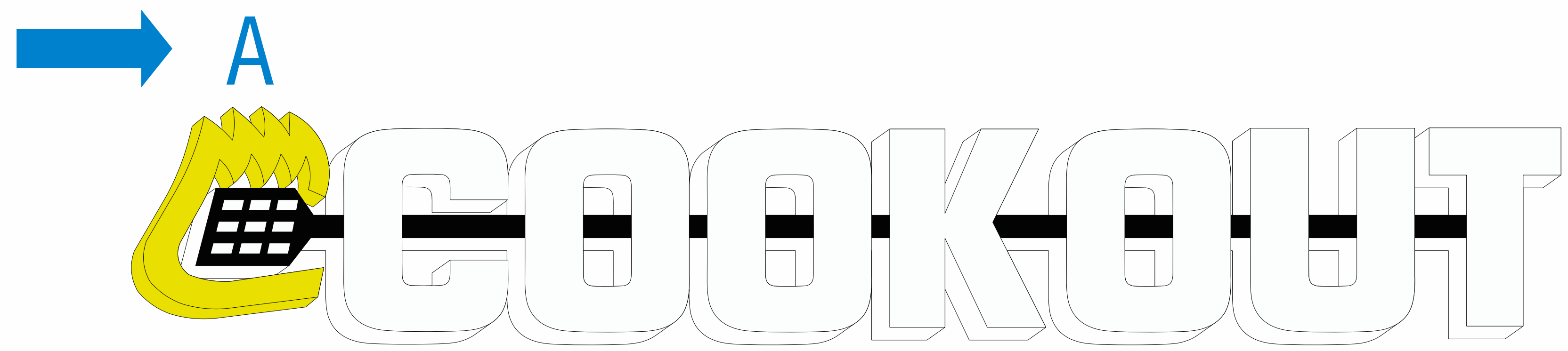
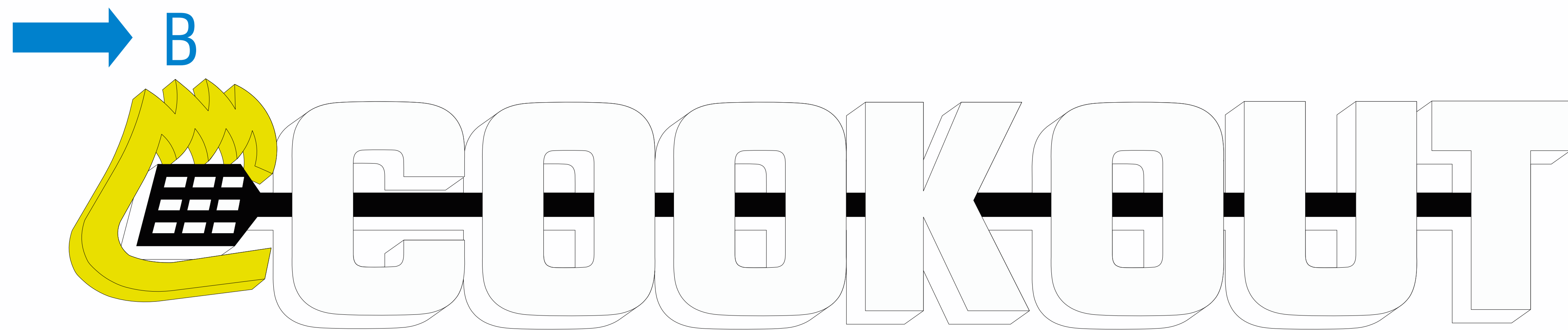


N Charleston (Dorchester RD) Cook Out Sign Drawing



Front wall signs

2'6" x 16' LOGO sign (40 sq)
- Lighted channel letters / LED lighted (GE LEDs)/ UL listed electrical



Dining room entrance side wall logo

4' x 26' (104 sq)
- Lighted channel letters / LED lighted (GE LEDs)/ UL listed electrical



Drive thru wall logo

3' x 19' (57 sq)
- Lighted channel letters / LED lighted (GE LEDs)/ UL listed electrical



(2) 6' x 6' drive up lighted menus



(2) 3' x 2' (3' high when installed) powder coated aluminum drive-way entrance signs

Back



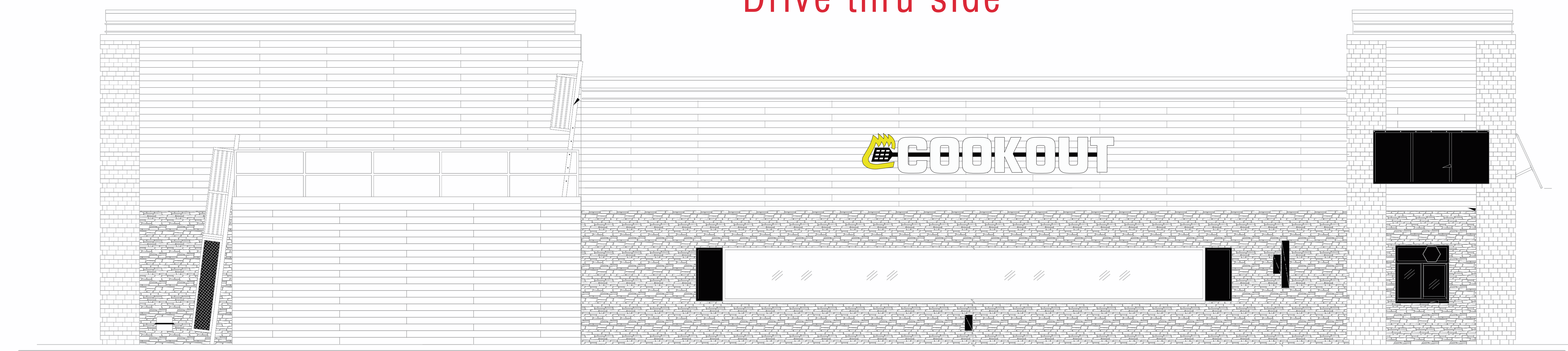
building 19' wide / sign uses 15' sq ft

Front



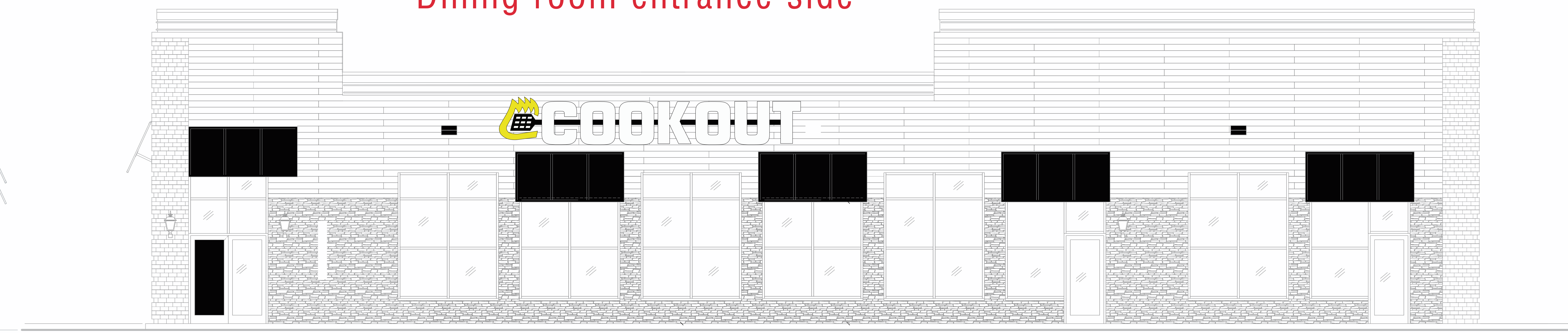
building 40' wide / sign uses 40 sq ft

Drive thru side

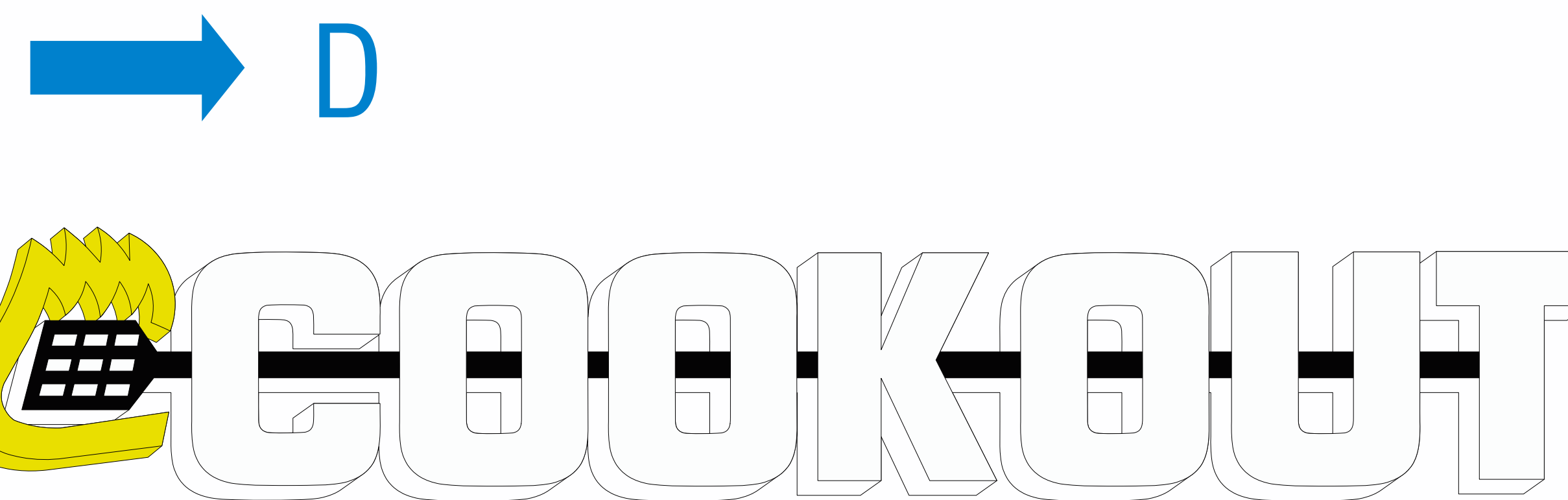


building 58' wide / sign uses 57 sq ft

Dining room entrance side



building 105' wide / sign uses 104 sq ft

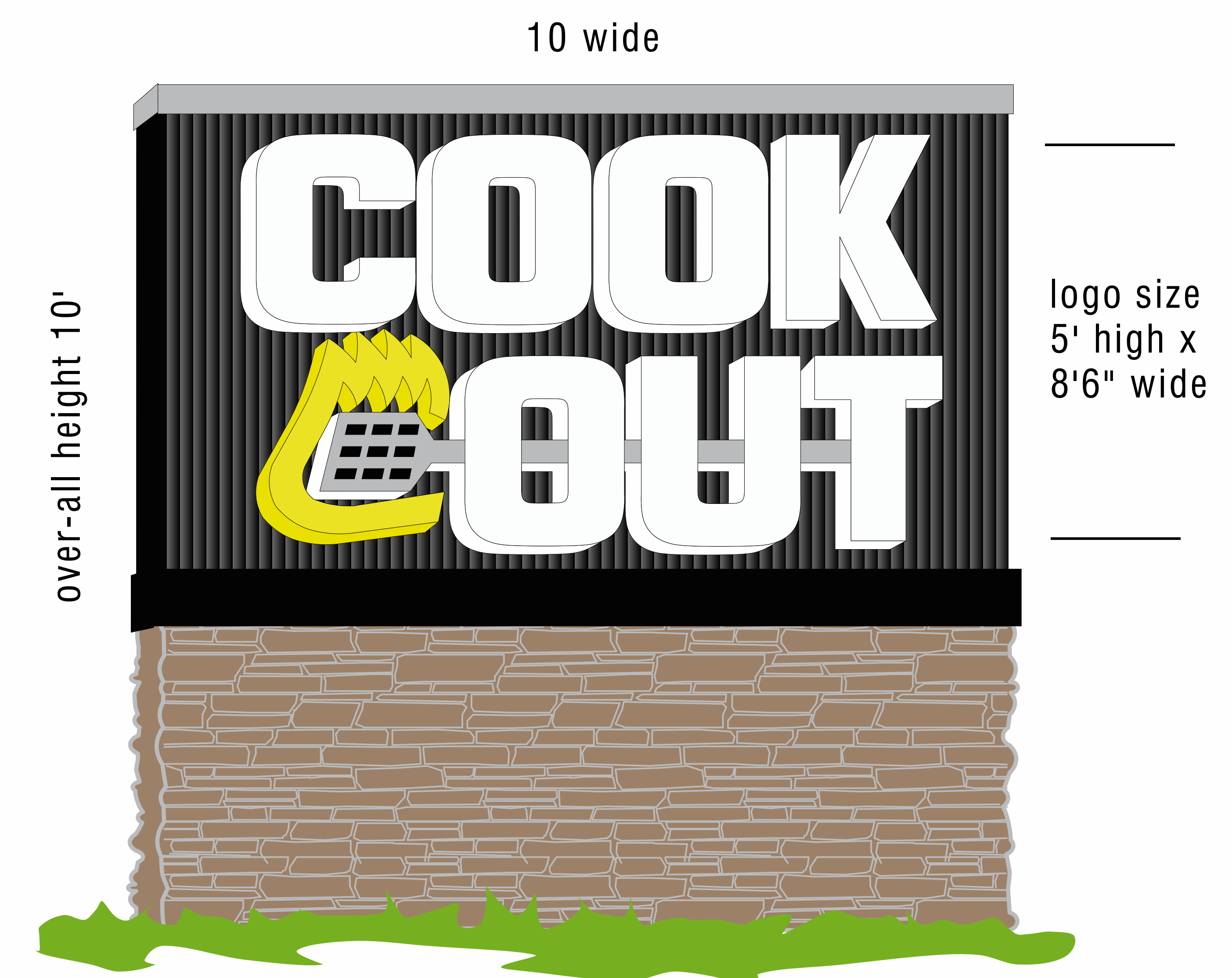


Back wall signs

1'6" x 10' LOGO sign (15 sq)
- Lighted channel letters / LED lighted (GE LEDs)/ UL listed electrical

H

Double sided monument style roadside sign
- LED lighted channel letter style logo
- UL listed electrical
- stone base
- powder coated corrugated aluminum logo area
- powder coated top and transition trim



Also included but not pictured:
- (1) interior dining room lighted menu
- (2) 2'x2' powder coated aluminum drive thru directional signs w/ 2"x2"x10' powder coated aluminum posts
- (2) dining room lighted wall poster signs
(1) for tray menu (1) for shakes

Scope of job:
Supply and install all of the below:

(1) building front wall logo sign	(1) free standing monument style sign
(1) building back wall logo sign	(3) menus (2) drive thru (1) dining room
(2) building side wall logo signs	(2) entrance signs
	(2) drive thru directional signs