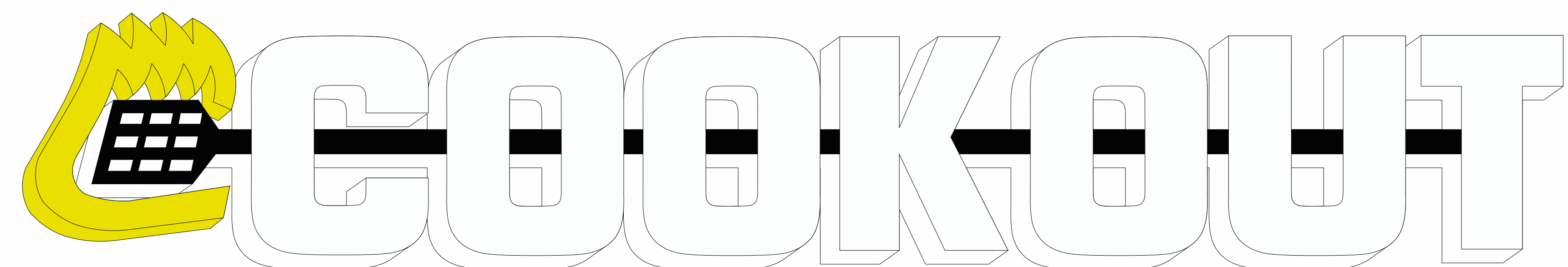


Burlington NC (Mill Rd.) Cook Out Sign Drawing

→ A and B



side wall signs

- 4' x 25' LOGO sign
- Lighted channel letters / LED lighted (GE LEDs)/ UL listed electrical

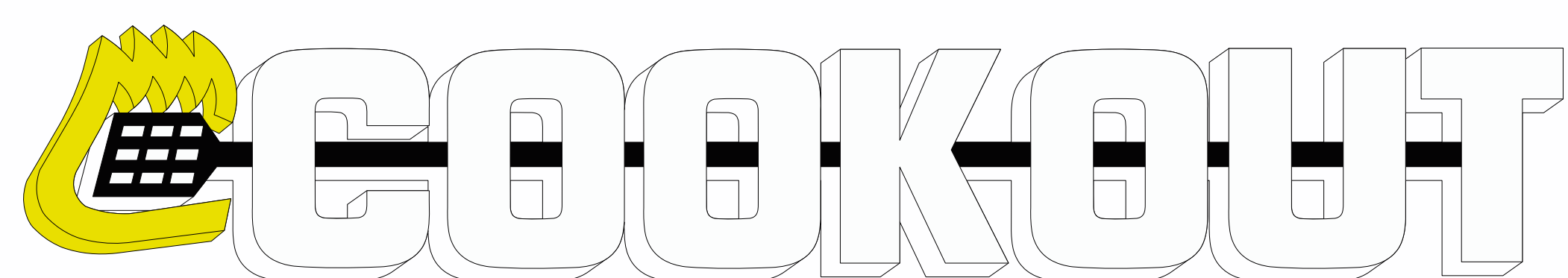
→ C



front wall

- 6' x 21' LOGO sign
- Lighted channel letter logo / LED lighted (GE LEDs)/ UL listed electrical on a Powder coated corrugated aluminum back-panel
- Tag line area: aluminum w cut-out lettering reviling second surface white acrylic / back lighted w GE LED
- Header: aluminum w red GE LED border stripes

→ D



Back wall signs

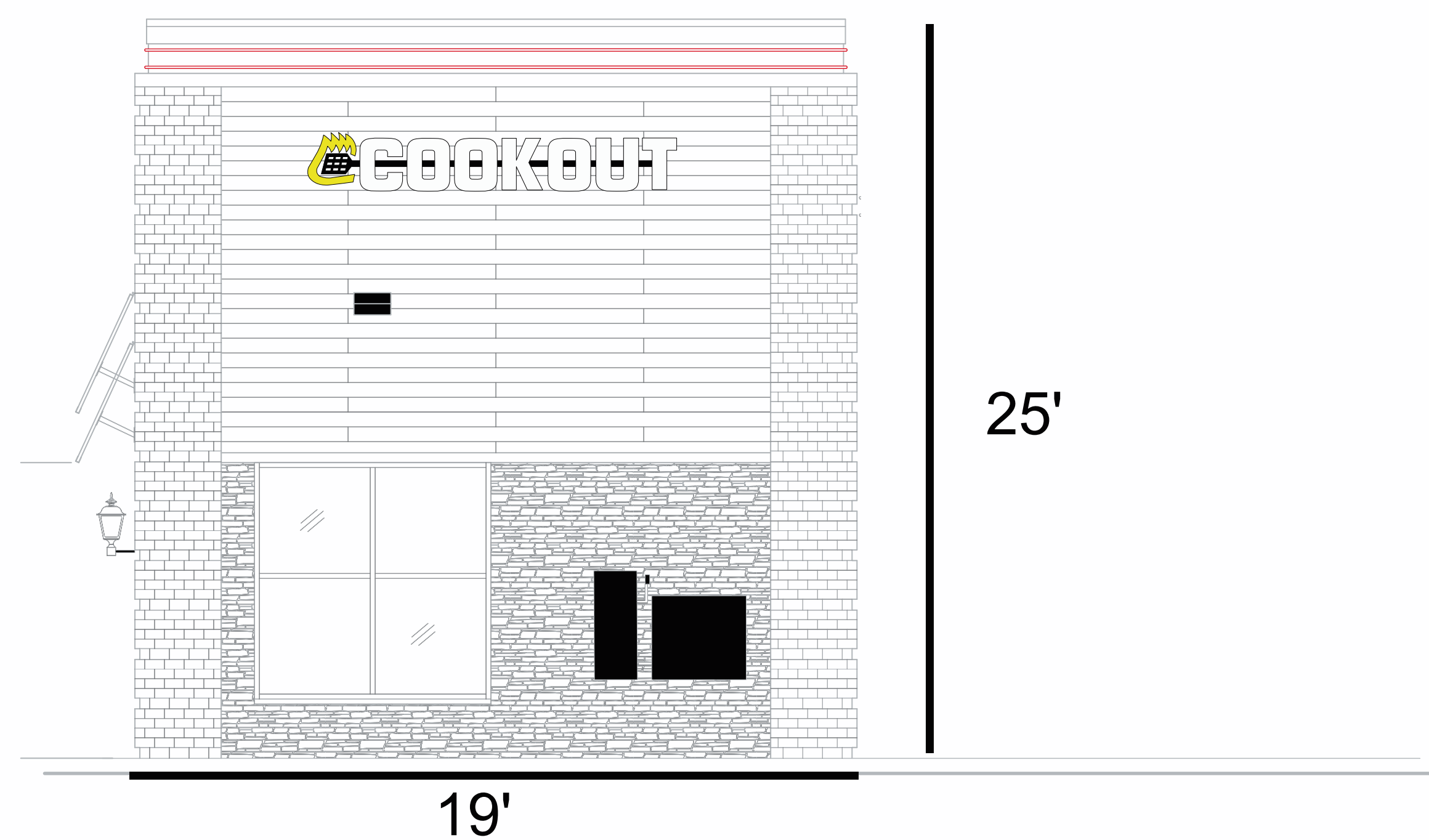
- 1'6" x 10' LOGO sign
- Lighted channel letters / LED lighted (GE LEDs)/ UL listed electrical

→ E

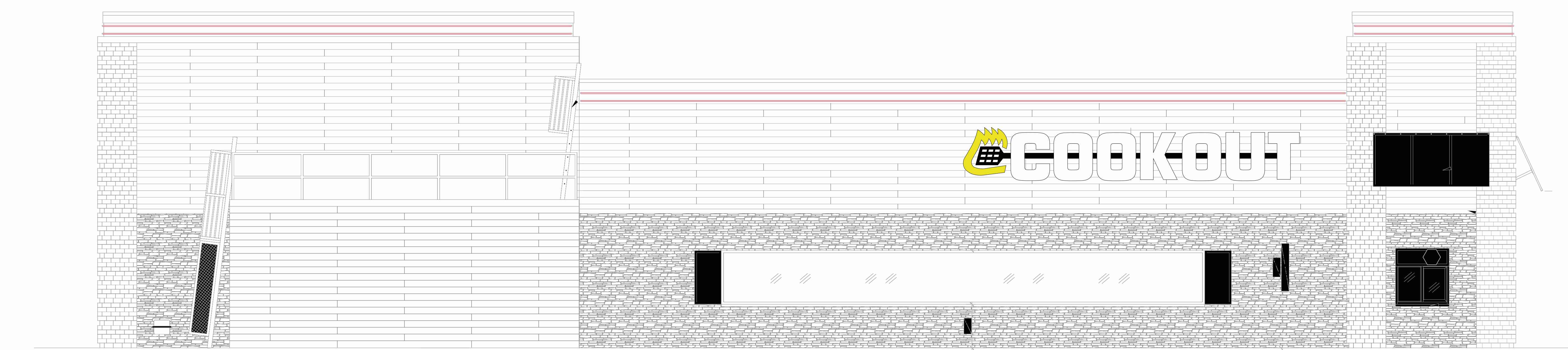


(2) 6' x 6' drive up lighted menus

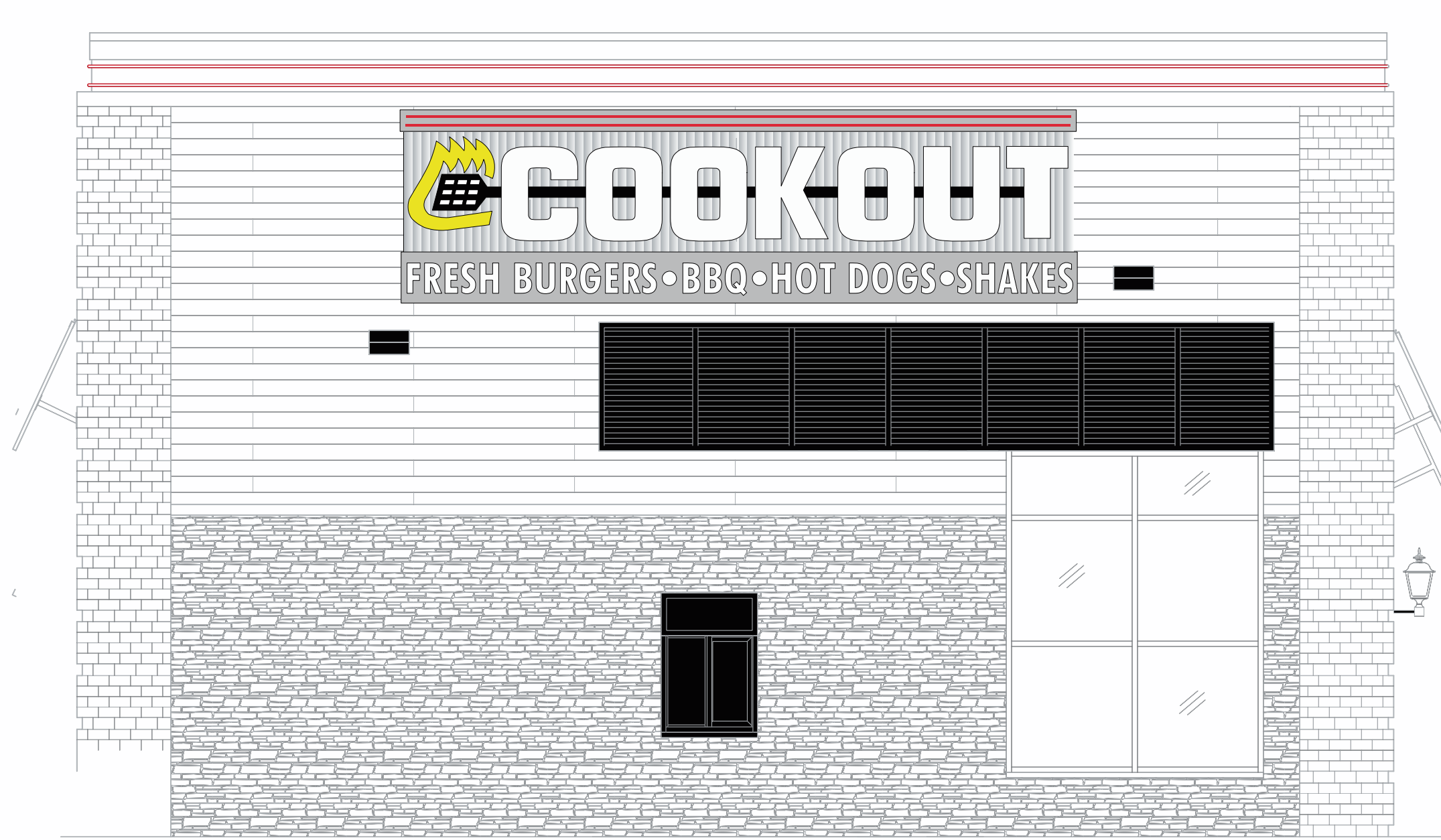
Back



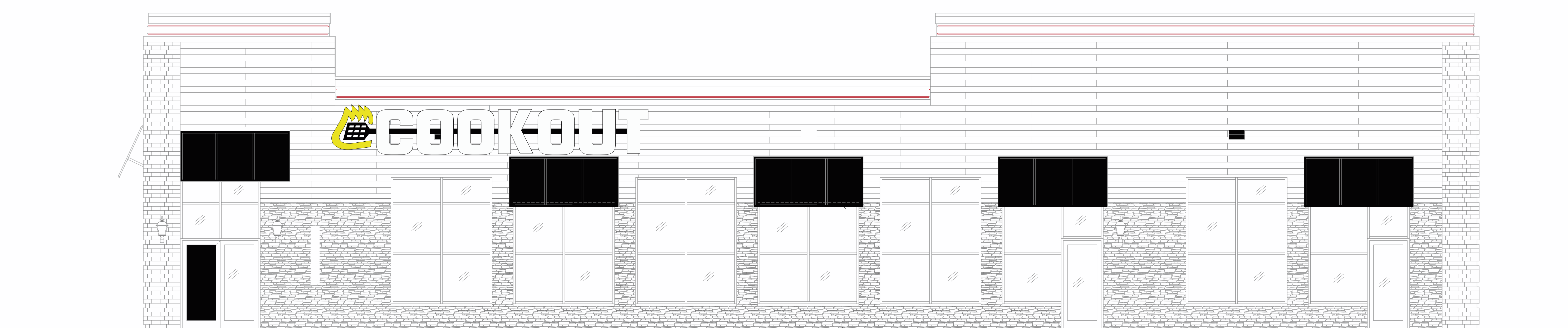
Drive thru side



Front



Dining room entrance side



→ F



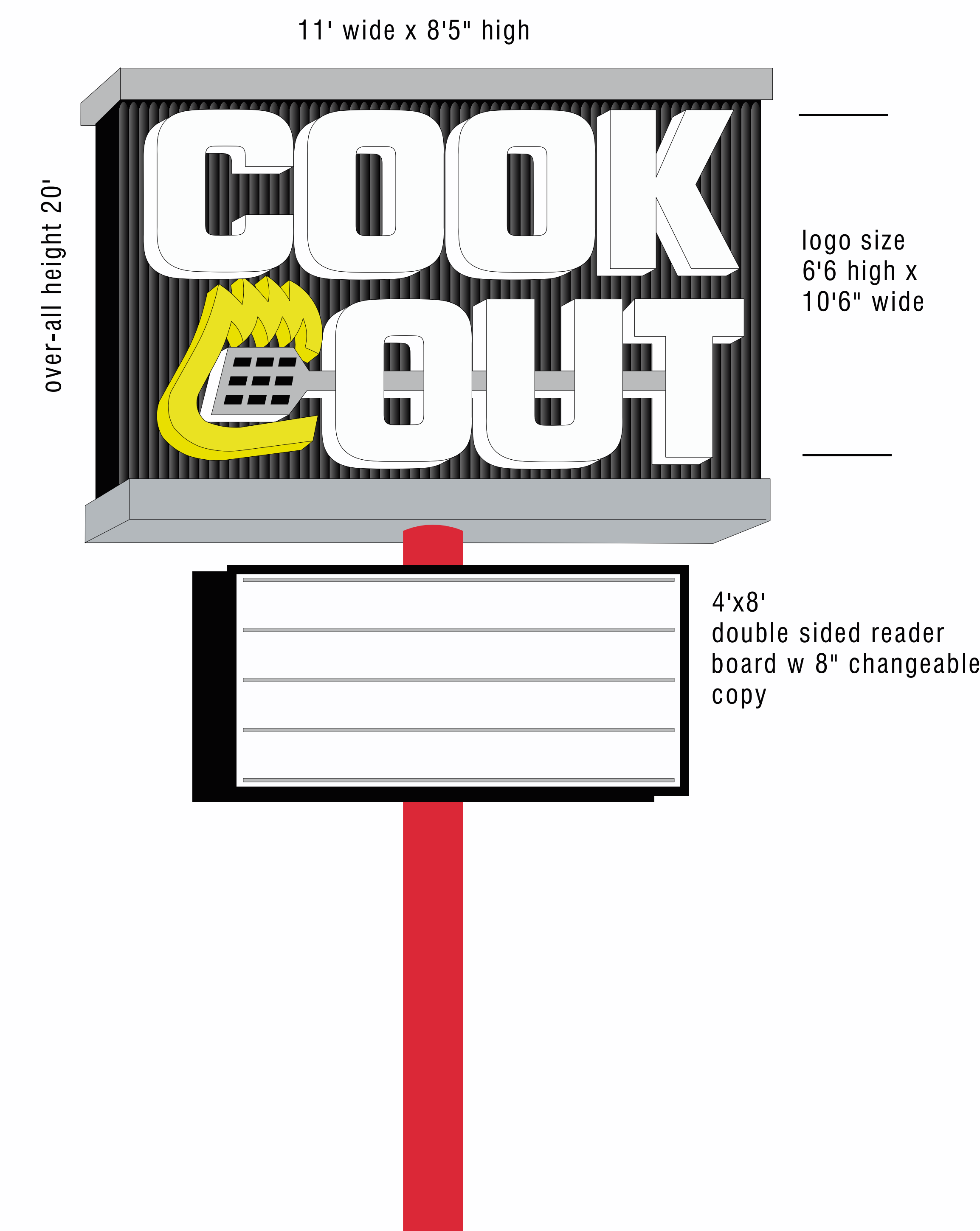
(2) 3' x 2' (3' high when installed) powder coated aluminum drive-way entrance signs

→ G

- Also included but not pictured:
- (1) interior dining room lighted menu
 - (2) 2'x2' powder coated aluminum drive thru directional signs w/ 2"x2"x10' powder coated aluminum posts
 - (2) dining room lighted wall poster signs (1) for tray menu (1) for shakes

→ H

- Double sided roadside sign
- LED lighted channel letter style logo
 - UL listed electrical
 - powder coated corrugated aluminum logo area
 - powder coated top and transition trim



→

500' of red neon border around top edge of building walls

Scope of job: Supply and install all of the below:	
(1) building front wall logo sign	(1) free standing sign
(1) building back wall logo sign	(3) menus (2) drive thru (1) dining room
(1) building right wall logo sign	(2) entrance signs
(1) building left wall logo sign	(2) drive thru directional signs
	(500') of red border neon



803-533-7446
313 John C Calhoun Drive
Orangeburg SC 29115
Linford Oberholtzer
lin@brandritesign.com
Mobile 803-707-4512