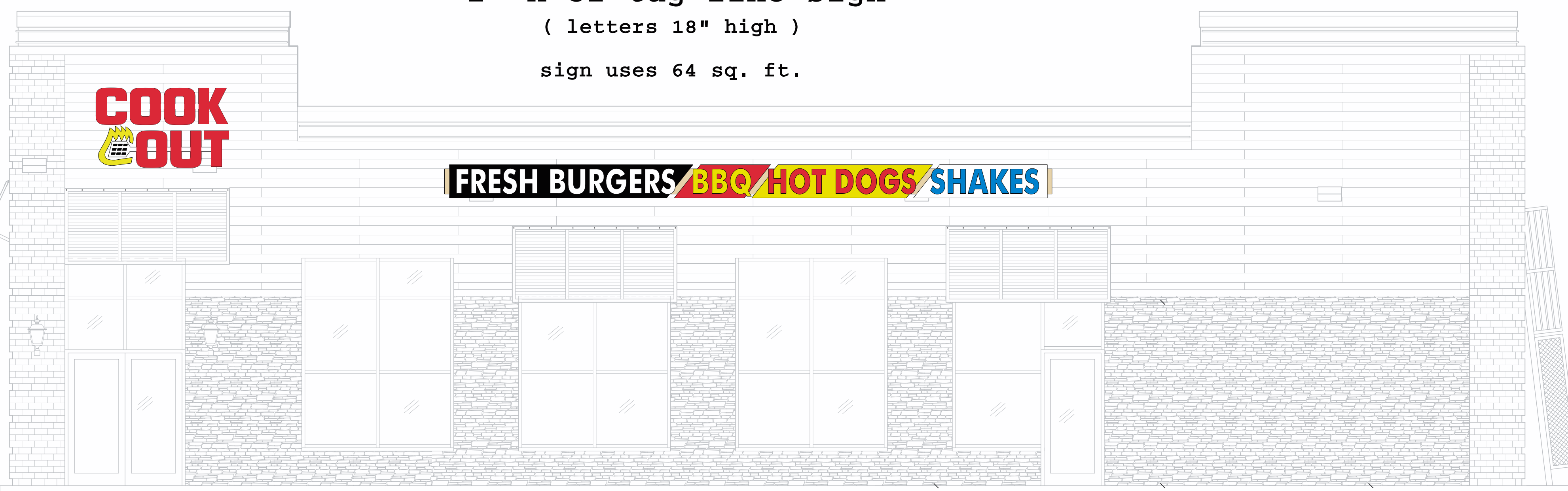


Spartanburg SC (JB White) Cook Out sign drawings

7' x 4'
stacked logo
(letters 24" high)
sign uses 28 sq. ft.

2' x 32 tag line sign
(letters 18" high)
sign uses 64 sq. ft.



92 sq ft of sign area used on this side / of 200 sq ft of total sign area allowed on building and pylon combined

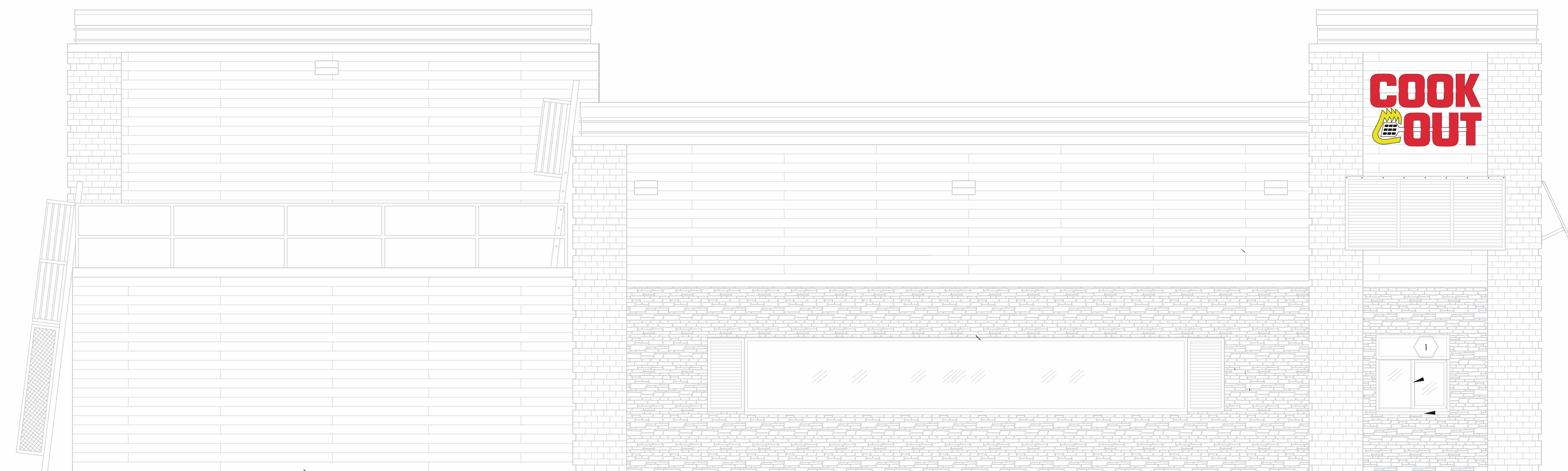
2 BUILDING ELEVATION
A2.1 SCALE: 1/4"=1'-0"

2' x 12'
stacked logo
sign uses 24 sq. ft.



24 sq ft of sign area used on this side / of 200 sq ft of total sign area allowed on building and pylon combined

6' x 4'
stacked logo
(letters 20" high)
sign uses 24 sq. ft.



24 sq ft of sign area used on this side / of 200 sq ft of total sign area allowed on building and pylon combined

1 BUILDING ELEVATION
A2.1 SCALE: 1/4"=1'-0"

Building wall Signs:

FRESH BURGERS / BBQ / HOT DOGS / SHAKES

(1) Tag lines / UL listed, LED lighted channel letters on a powder-coated aluminum back-panel

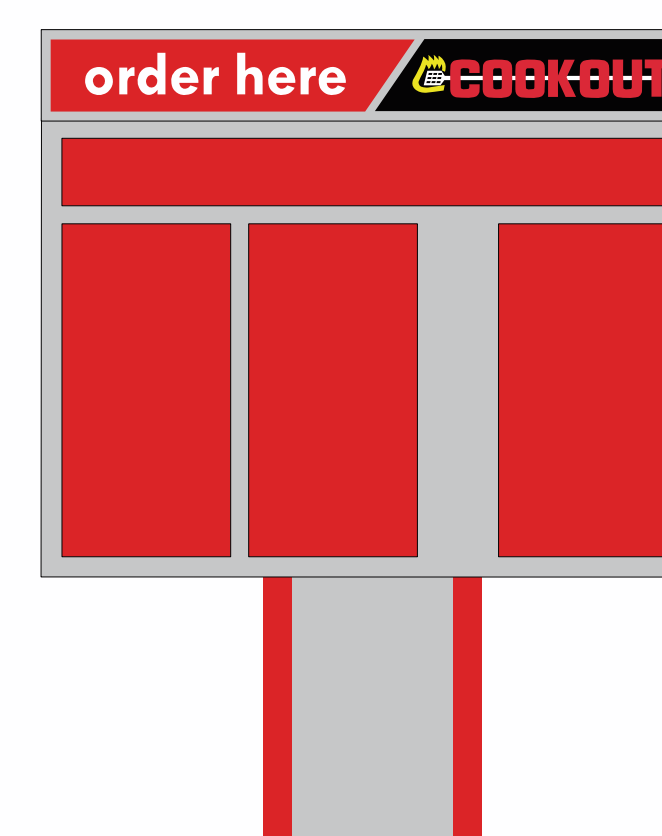
COOKOUT

(1) Long logo signs / front of building
Individual UL listed, LED lighted channel letters

**COOK
OUT**

(2) stacked logos
each side of building

Individual UL listed, LED lighted channel letters



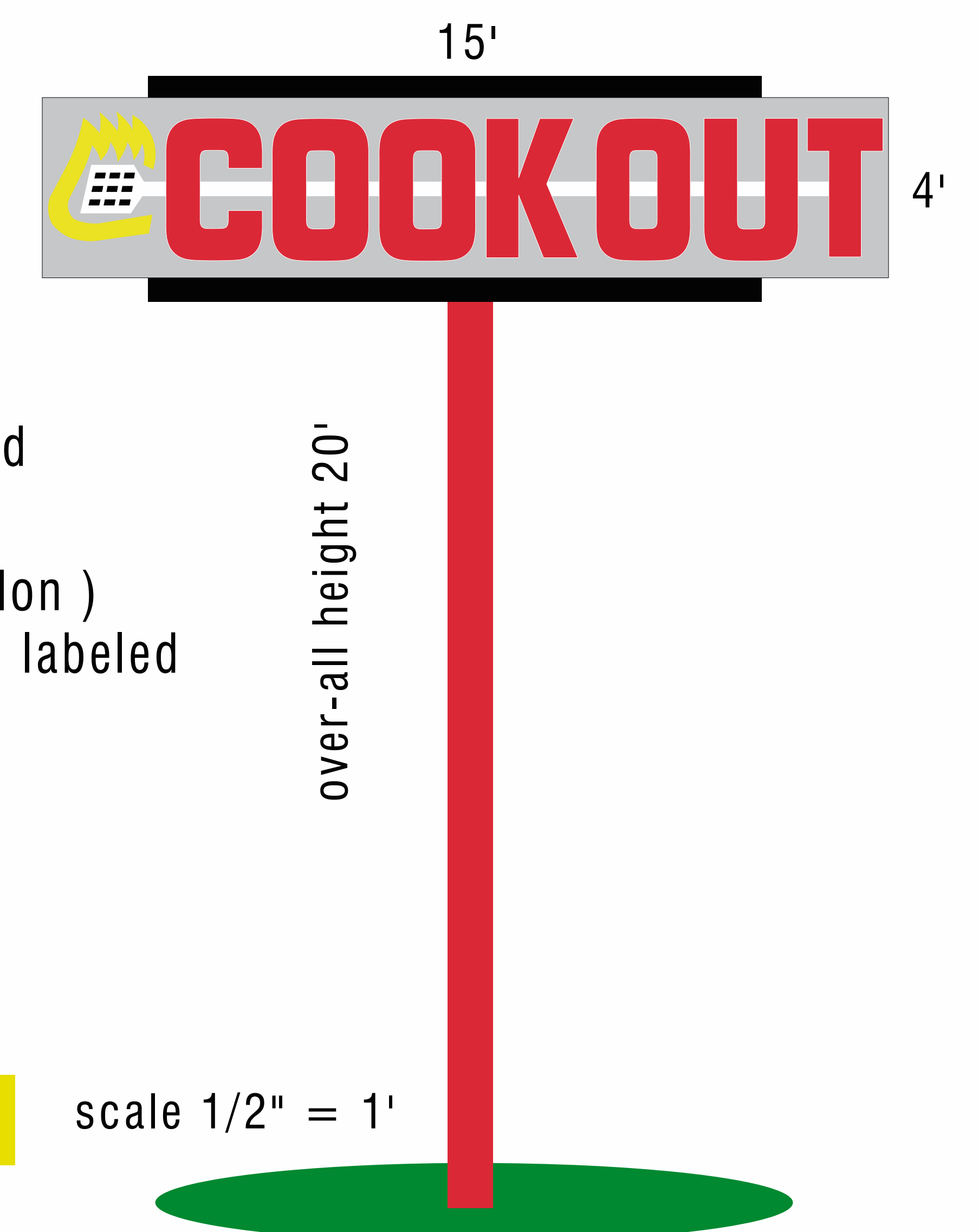
drive-up menus:

Scope of job:

Supply and install all of the below:

- (1) building front wall sign
- (2) building side wall logo signs
- (1) building side wall tag lines
- (1) free standing pylon
- (3) menus (2 drive up - 1 dining room)
- (2) dining room poster signs
- (2) entrance / exit signs
- (500') of white border neon

Pylon



Pylon sign:

- Top sign (ID)
powder coated aluminum cabinet
with LED lighted channel letters / UL listed
and labeled
- Changeable message sign (option B pylon)
plastic faces / LED lighted / UL listed and labeled
- 10" steel pole

Changeable message letters by Gemni

code allows 60 sq. ft. for free standing pylon

scale 1/2" = 1'

BrandRite
SIGN COMPANY INC.

803-533-7446
313 John C Calhoun Drive
Orangeburg SC 29115
Linford Oberholtzer
lin@brandritesign.com
Mobile 803-707-4512