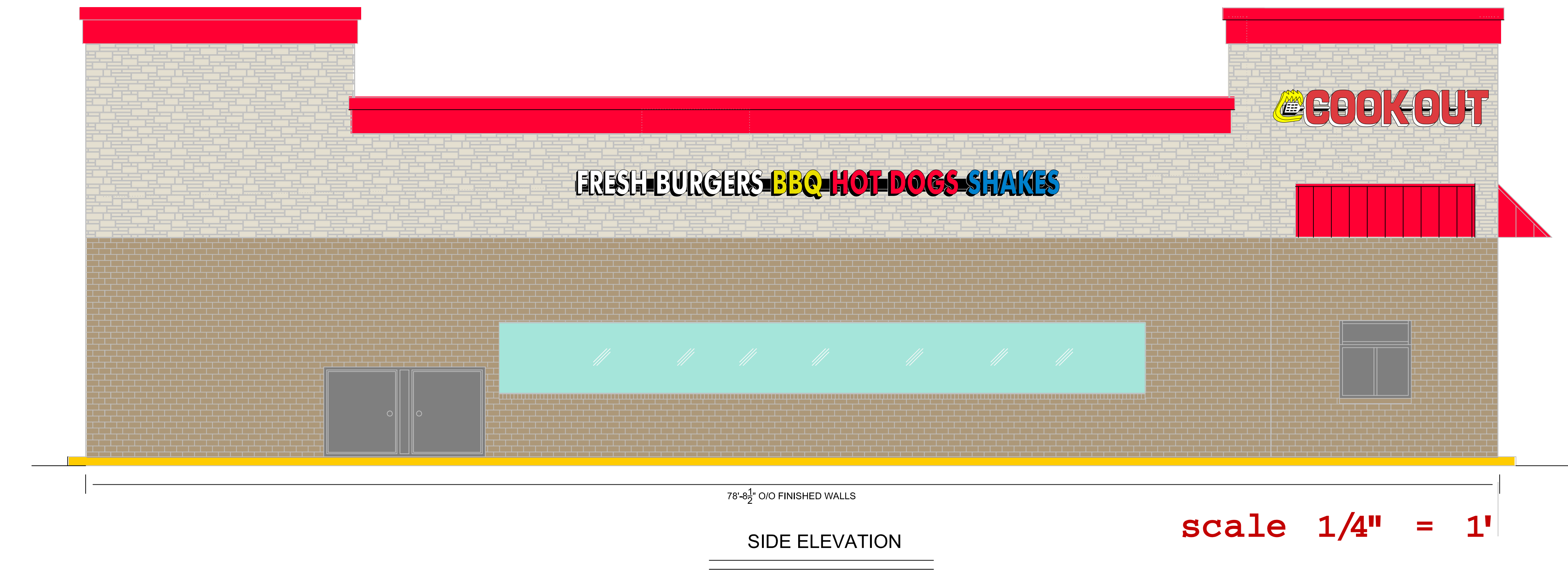


Sylva NC COOK OUT

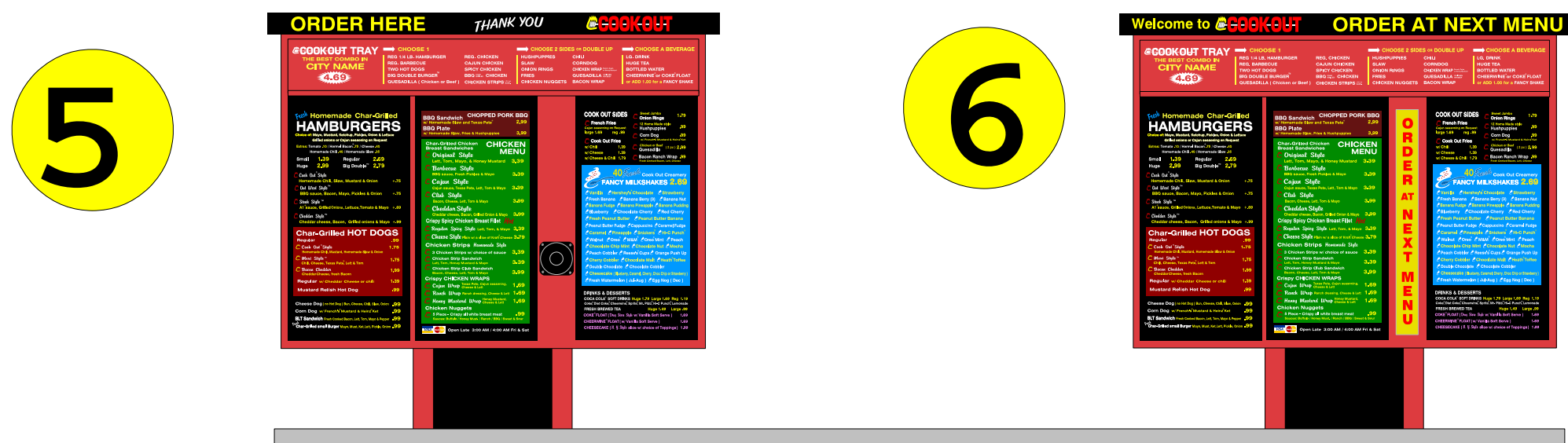
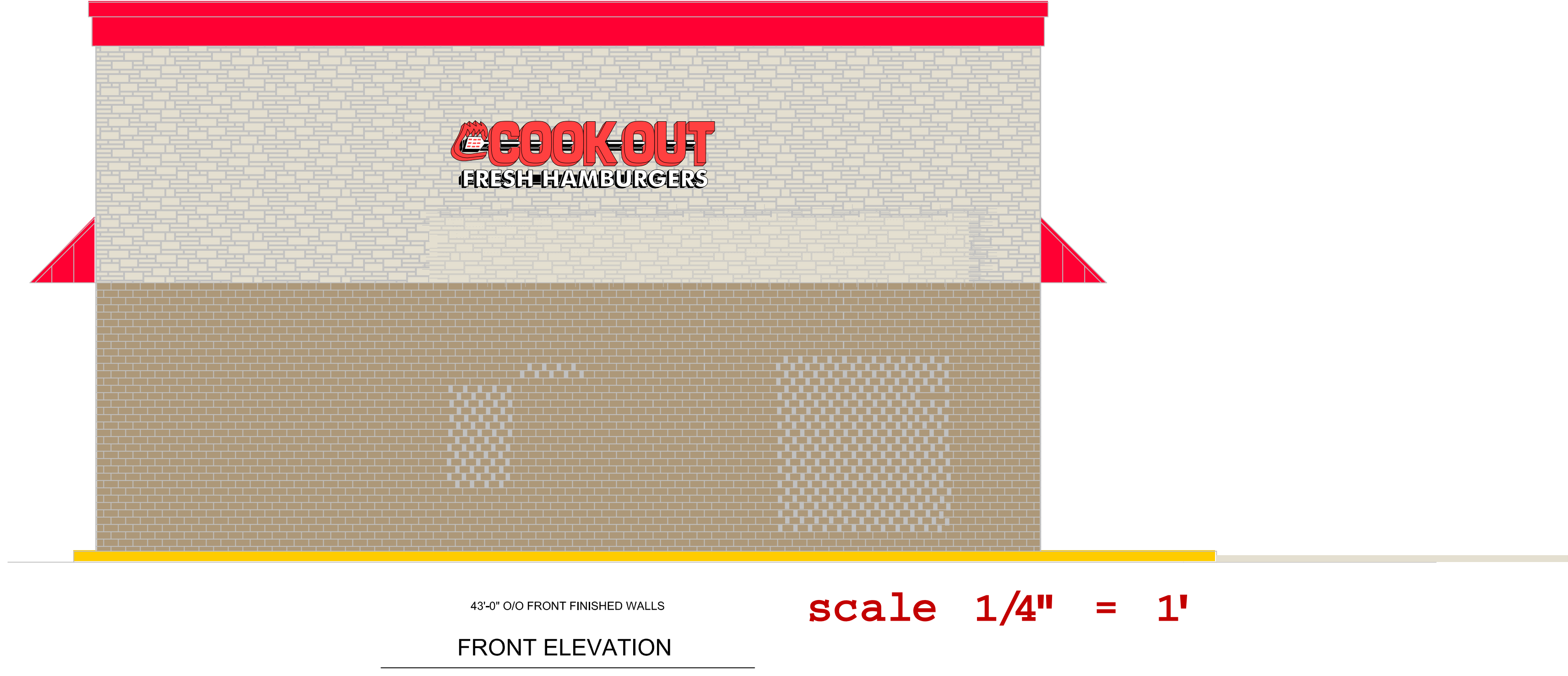


SCOPE OF JOB:

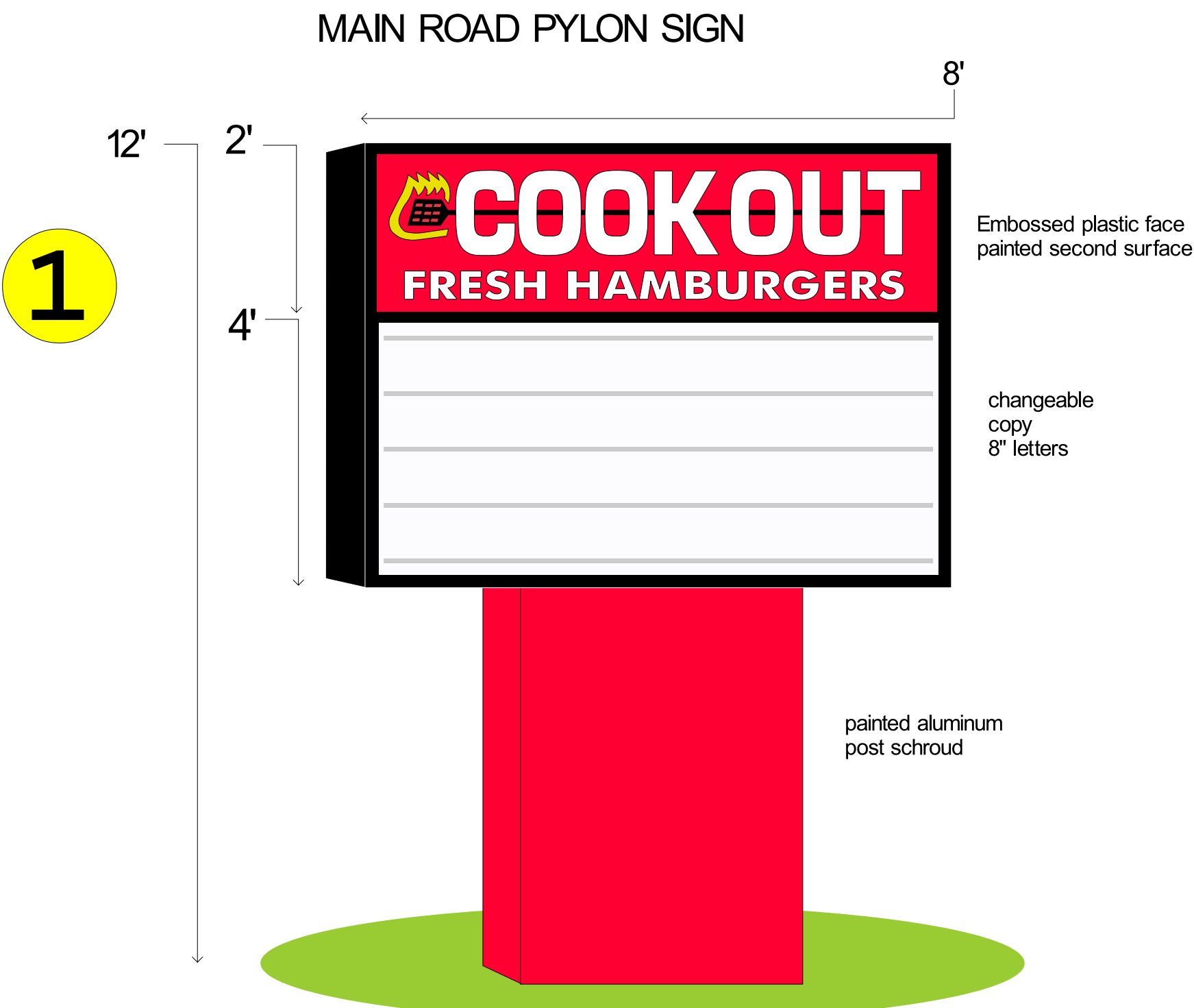
- Right and Left sides of building: 2' x 12' logo and 2' x 27' tagline **2 3**
- Front of building: 3' x 12' logo w/ Fresh Ham **4**
- Pylon: 6' x 8' Reader board and logo **1**
- Menu systems: (2) Drive Thru preview boards / (2) Drive Thru order boards / (1) Dinning room wall menue / (1) lighted tray sign. **5 6**
- 460' of white neon **not pictured**

City sign code allowances:
- Each wall may have 1 sq ft of sign for each foot of wall width.
- Pylon: 12' max height / 48 sq ft max

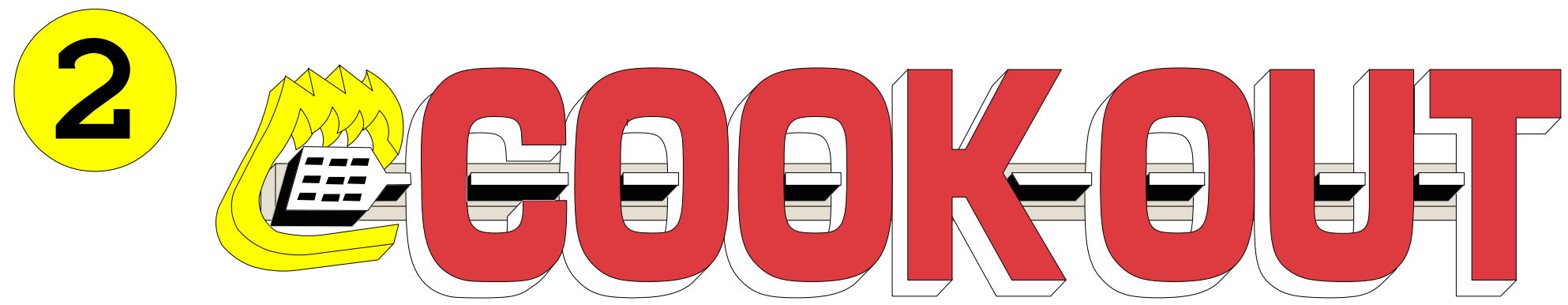
This sign package uses all allowable footage



- Drive up ordering menu:
- back lighted w/ white LED.
 - printed translucent menu curtains.
 - backup power supply system.
 - UL listed electrical.
 - speaker panel.
- Drive up preview menu:
- back lighted w/ white LED.
 - printed translucent menu curtains.
 - backup power supply system.
 - UL listed electrical.



- Tag line:
- channel letters on color matched race-way.
 - LED lighting.
 - 5.5" deep letters
 - UL listed electrical.



- Lighted Logo:
- channel letters on color matched race-way.
 - LED lighting.
 - 5.5" deep letters
 - UL listed electrical.



- Lighted Logo w/ Fresh Ham:
- channel letters on color matched race-way.
 - LED lighting.
 - 5.5" deep letters
 - UL listed electrical.



803-533-7446
313 John C Calhoun Drive
Orangeburg SC 29115
Linford Oberholtzer
lin@brandritesign.com
Mobile 803-707-4512