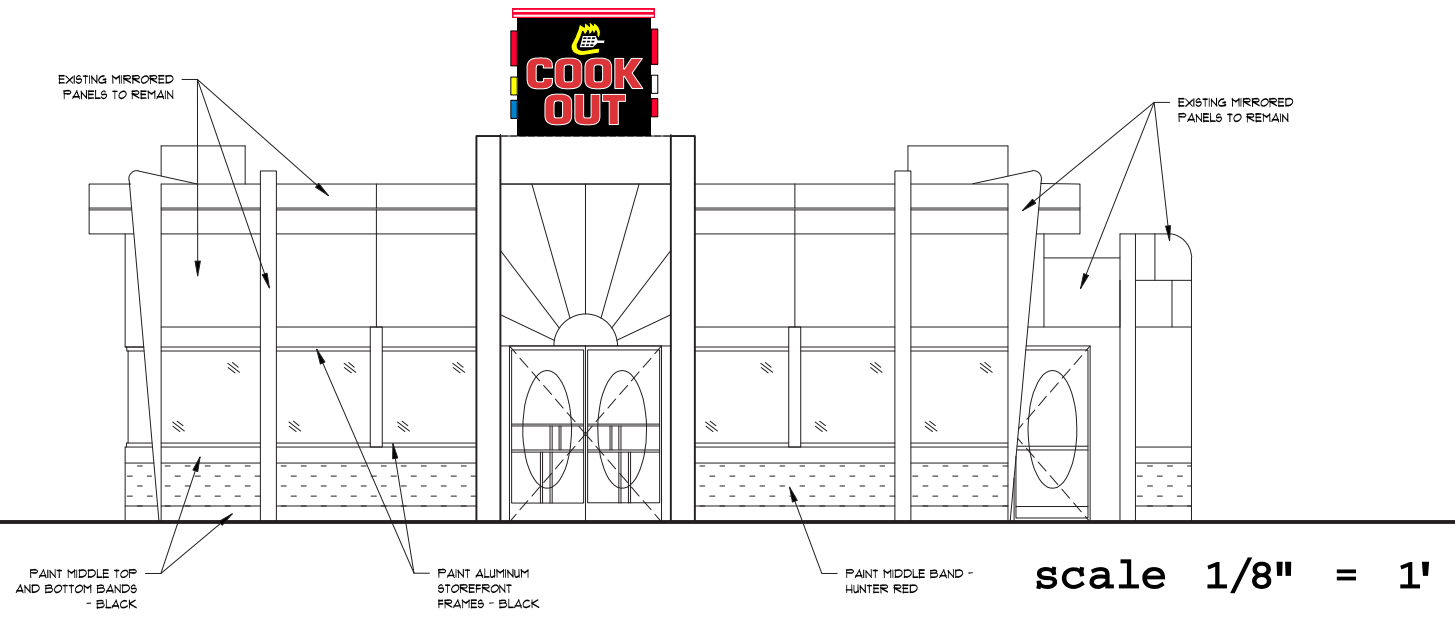
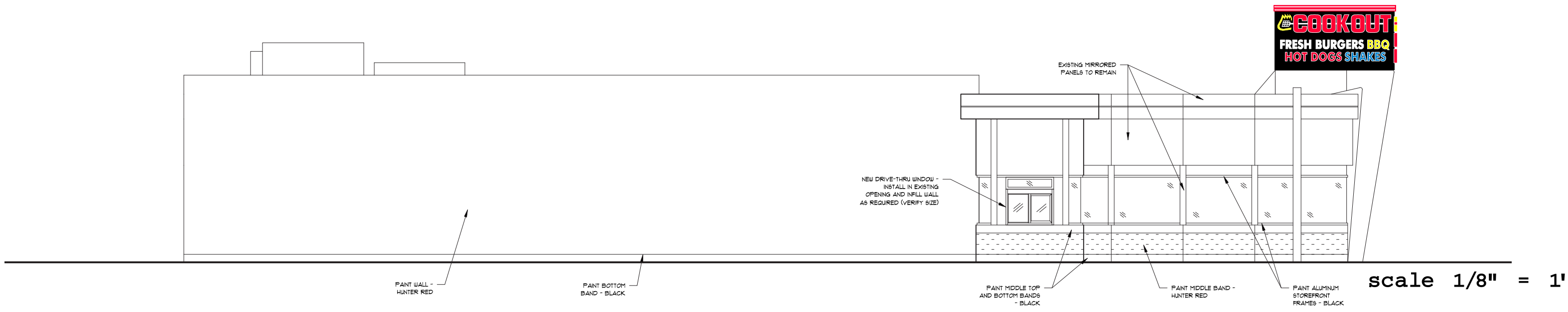


Atlanta GA ( Ponce de Leon )  
Cook Out Sign Drawings

Aluminum sign cabinet  
w/ LED lighted channel  
letters  
6'6" wide x 5'6" high  
12" letters  
- Double sided  
- UL listed electrical



Building rooftop sign  
- (3) sided - 77.5 sq. ft.  
- Powder coated aluminum structure  
w/ LED lighted channel letters  
- UL listed electrical  
- Fasten to building using the  
existing steel poles from old sign.

Code allows 10% of front elevation = 124.6 s.f.

Cook Out exterior menu signs  
Model FS2014



(2) Lighted powder coated  
aluminum sign cabinets w/  
changeable copy faces.  
( Installed back-to-back )  
- 6' wide x 4' high  
- 8" changeable copy letters  
- Double sided  
- UL listed electrical

Total Square footage  
for pylon sign = 59.75  
Code allows 60 sf



- Existing  
steel post

Pylon  
scale 1/2" = 1'

SCOPE OF JOB

- 1 Building signs: (3) sided roof mounted lighted sign
- 2 Freestanding double sided pylon sign:
- 3 (1) drive-up preview menus.  
(1) drive-up ordering menus.
- 4 5 Interior menu and lighted tray sign **not pictured**



803-533-7446  
313 John C Calhoun Drive  
Orangeburg SC 29115  
Linford Oberholtzer  
lin@brandritesign.com  
Mobile 803-707-4512