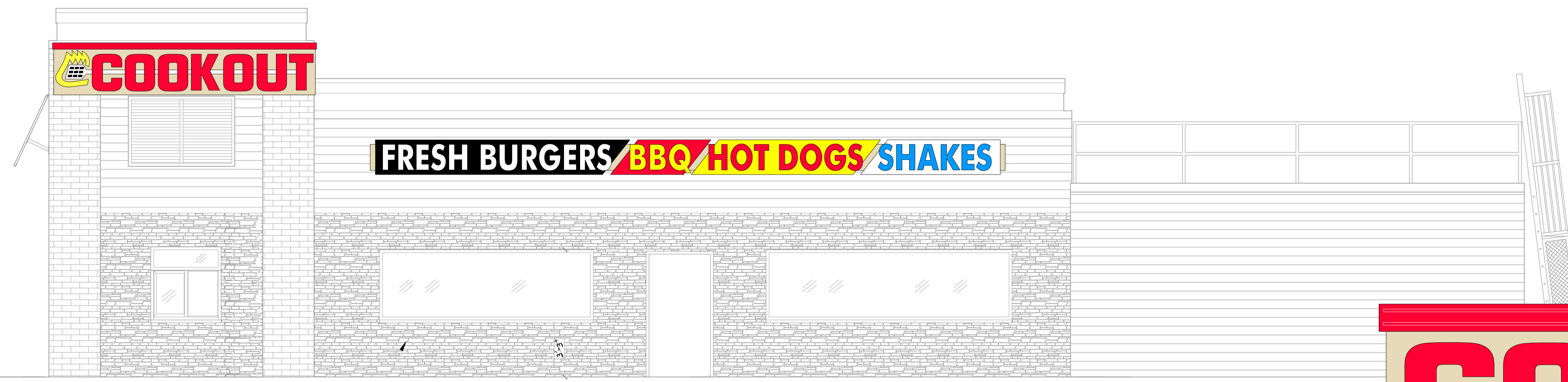


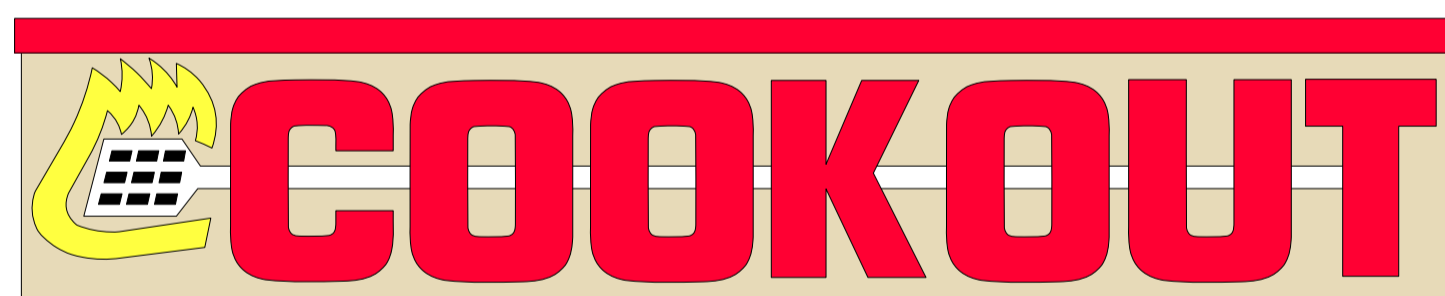
# Cordele GA Cook Out sign drawings



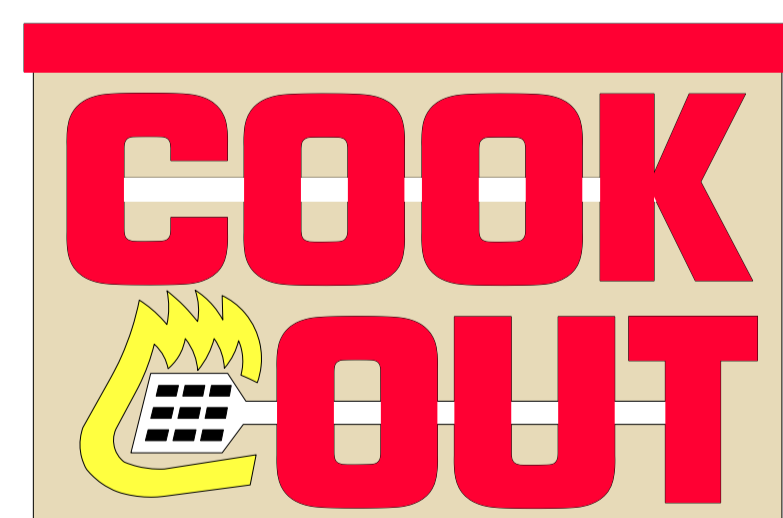
Building wall Signs:  
 - LED lighted, UL listed channel letters  
 on powder coated aluminum back- panels' scale 1/2" = 1'



( 2 ) Tag lines / both sides of building / 18" letters on 36" x 2' back-panel

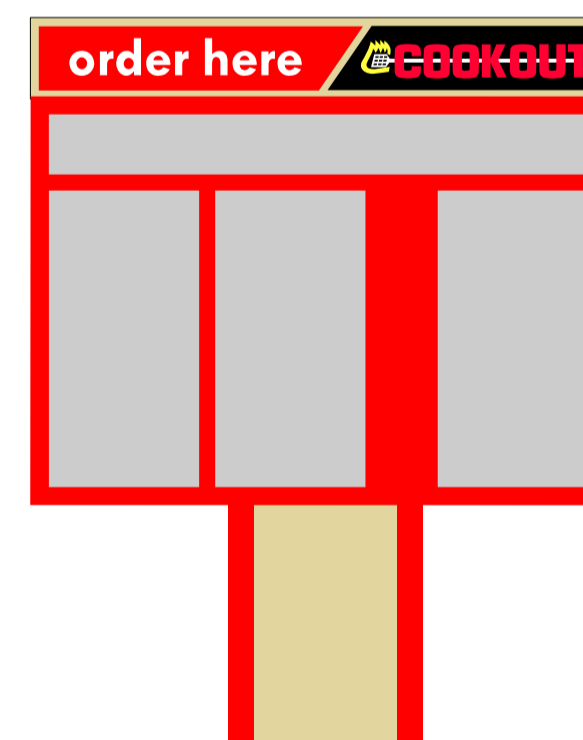


( 2 ) Long logo signs / both sides of building / 27" letters on 15' x 3' back-panel



( 1 ) Square logo sign / front of building / 24" letters on 8' x 5' back-panel

( 3 ) menus:  
 ( 1 ) walk-up and ( 2 ) drive thru

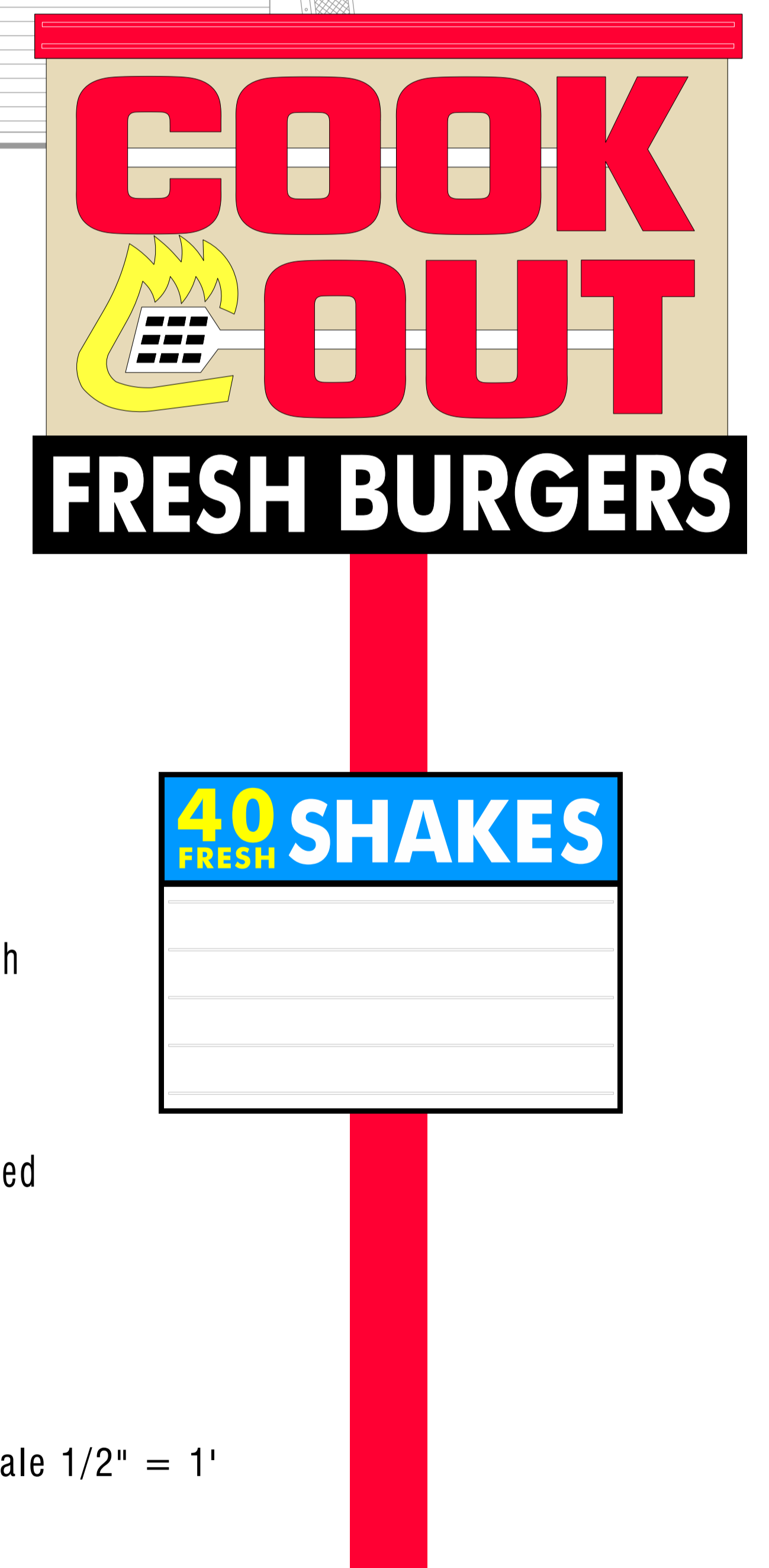


Pylon sign:

- Top sign ( ID ) 12'6" wide x 9'6" high  
Rotating / powder coated aluminum cabinet with  
LED lighted channel letters / UL listed and  
labeled
- Changeable message sign 8' wide x 6' high  
plastic faces / LED lighted / UL listed and labeled
- Over-all height 30'
- 14" steel pole

Changeable message letters by Gemni

scale 1/2" = 1'



- Scope of job:  
 Supply and install all of the below:
- ( 1 ) building front wall sign
  - ( 2 ) building side wall logo signs
  - ( 2 ) building side wall tag lines
  - ( 1 ) free standing pylons
  - ( 3 ) menus 2 - drive thru 1- walk-up
  - ( 2 ) entrance / exit signs
  - ( 500' ) of white border neon



**803-533-7446**  
 313 John C Calhoun Drive  
 Orangeburg SC 29115  
 Linford Oberholtzer  
 lin@brandritesign.com  
 Mobile 803-707-4512