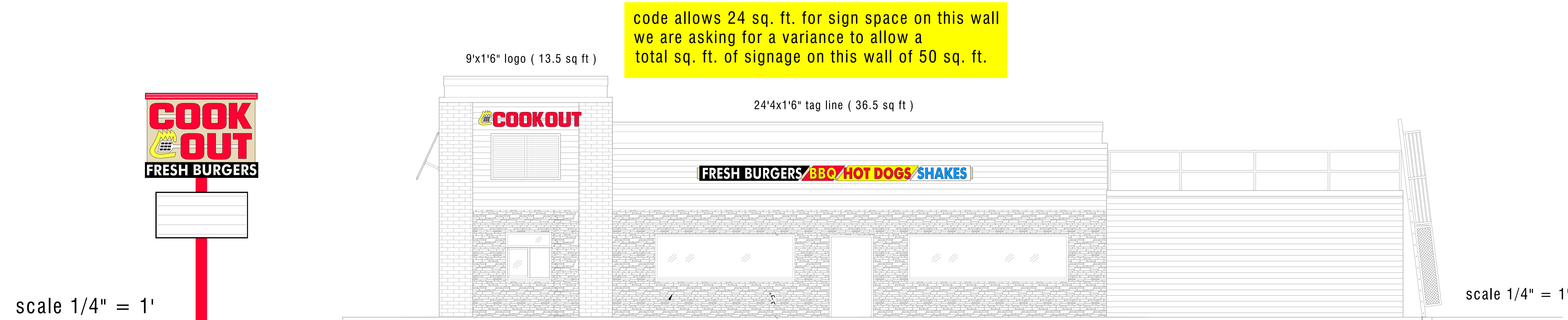
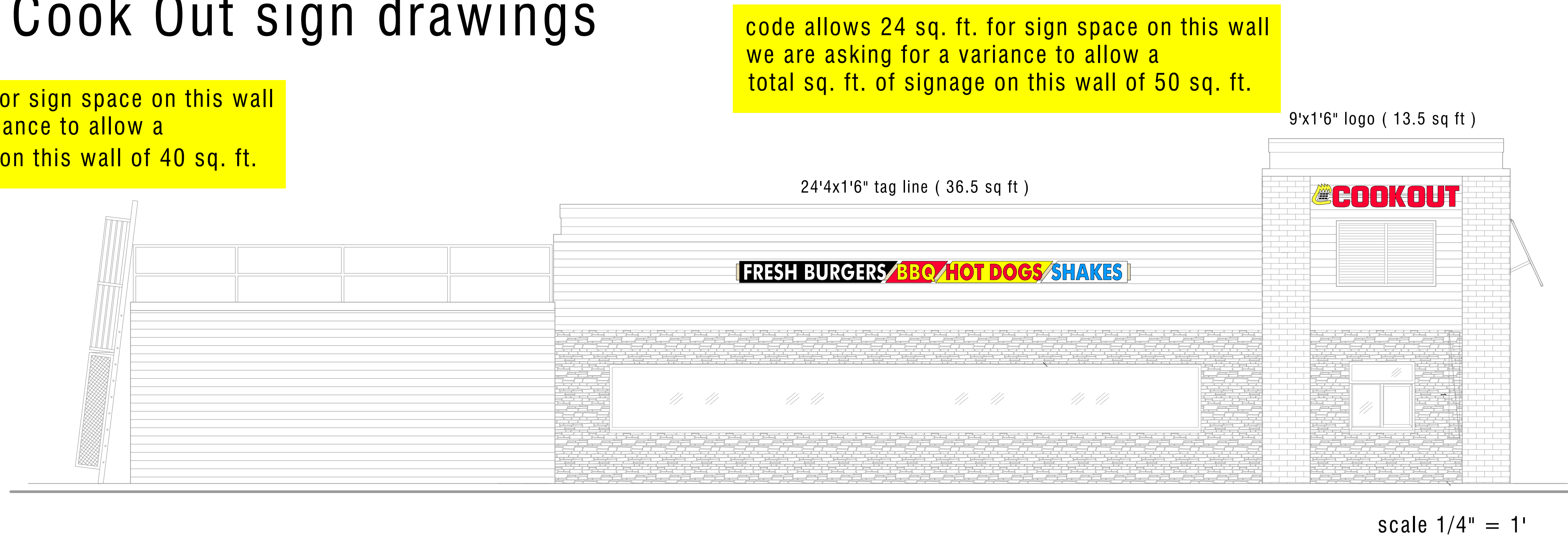
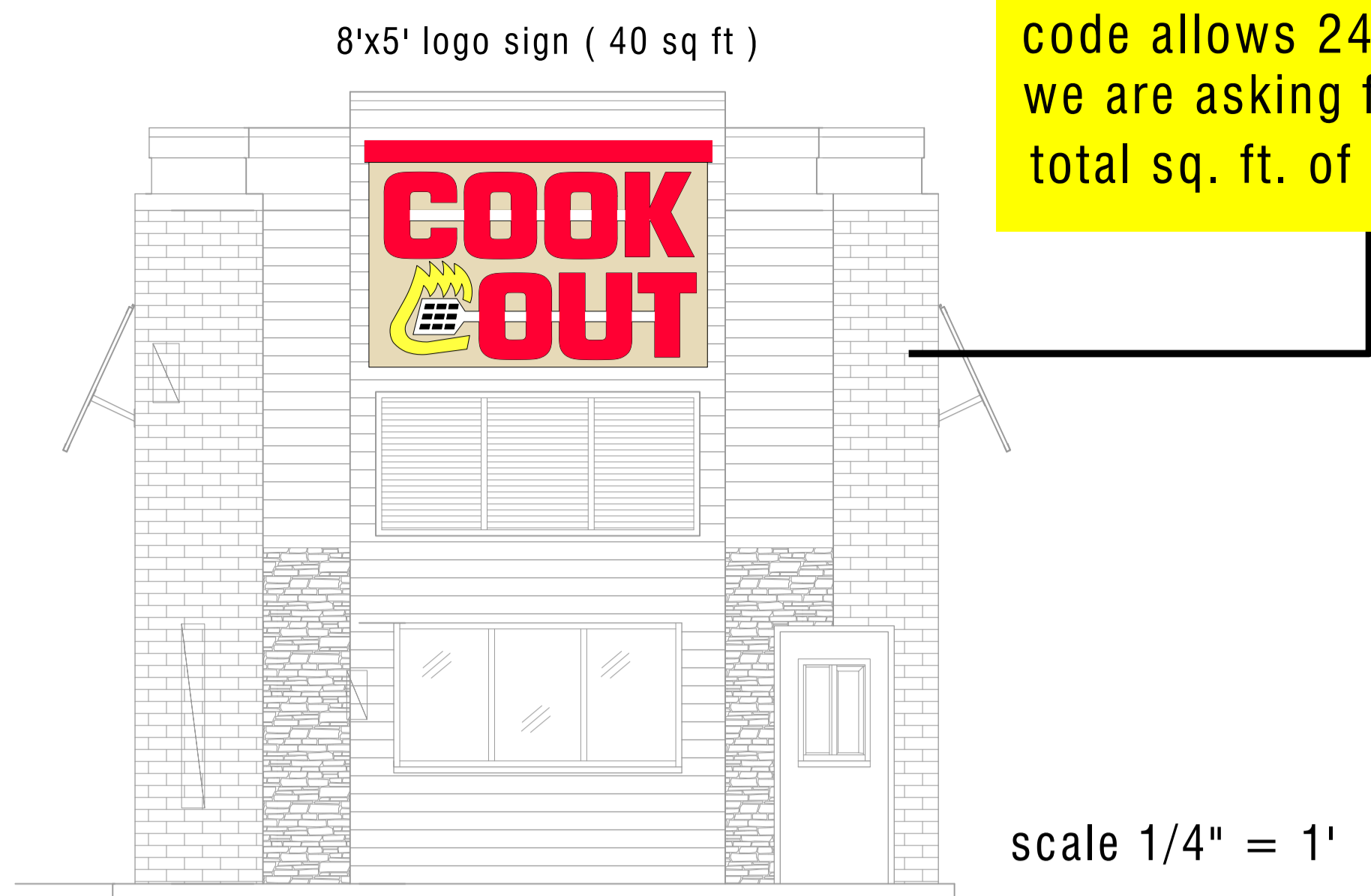


Americus GA (112 Hudson St.) Cook Out sign drawings



Building wall Signs:

- LED lighted, UL listed channel letters on powder coated aluminum back-panels'

FRESH BURGERS / BBQ / HOT DOGS / SHAKES

(2) Tag lines / both sides of building / powder-coated aluminum back-panel

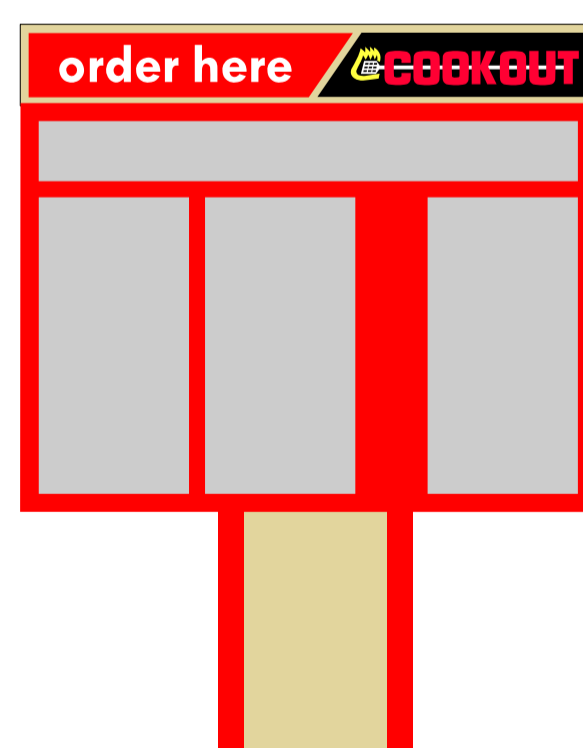
COOK OUT

(2) Long logo signs / both sides of building

COOK OUT

(1) Square logo sign / front of building / powder-coated aluminum back-panel

- (3) menus:
- (1) walk-up and
 - (2) drive thru



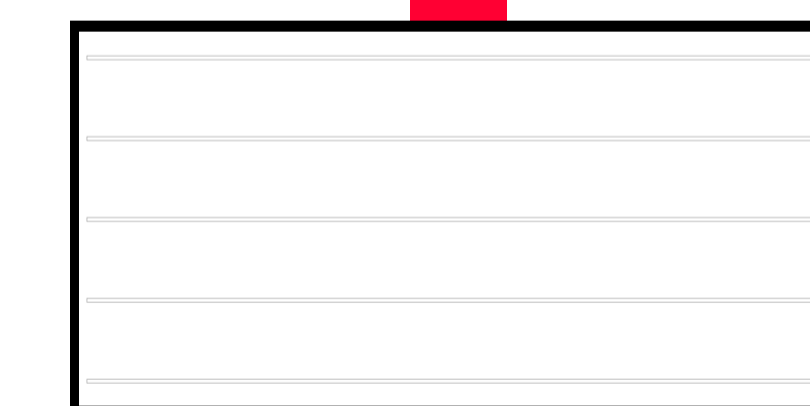
Pylon sign:

- Top sign (ID) 10' wide x 7'6" high Rotating / powder coated aluminum cabinet with LED lighted channel letters / UL listed and labeled
- Changeable message sign 8' wide x 4' high plastic faces / LED lighted / UL listed and labeled
- Over-all height 20'
- 12" steel pole

Changeable message letters by Gemni

code allows 75 sq. ft. for free standing pylon we are asking for a variance to allow an additional 32 sq. ft. for a changeable copy sign

COOK OUT
FRESH BURGERS



scale 1/2" = 1'

Scope of job:

Supply and install all of the below:

- (1) building front wall sign
- (2) building side wall logo signs
- (2) building side wall tag lines
- (1) free standing pylons
- (3) menus 2 - drive thru 1- walk-up
- (2) entrance / exit signs
- (500') of white border neon



803-533-7446

313 John C Calhoun Drive
Orangeburg SC 29115

Linford Oberholtzer
lin@brandritesign.com
Mobile 803-707-4512