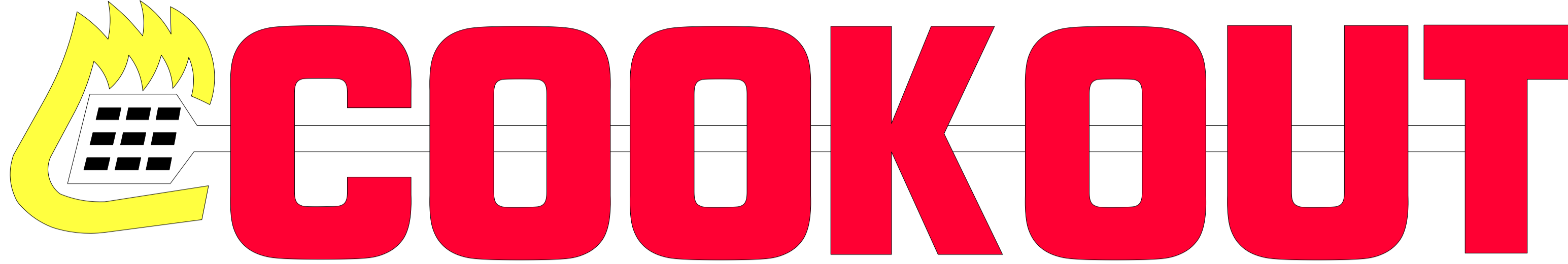
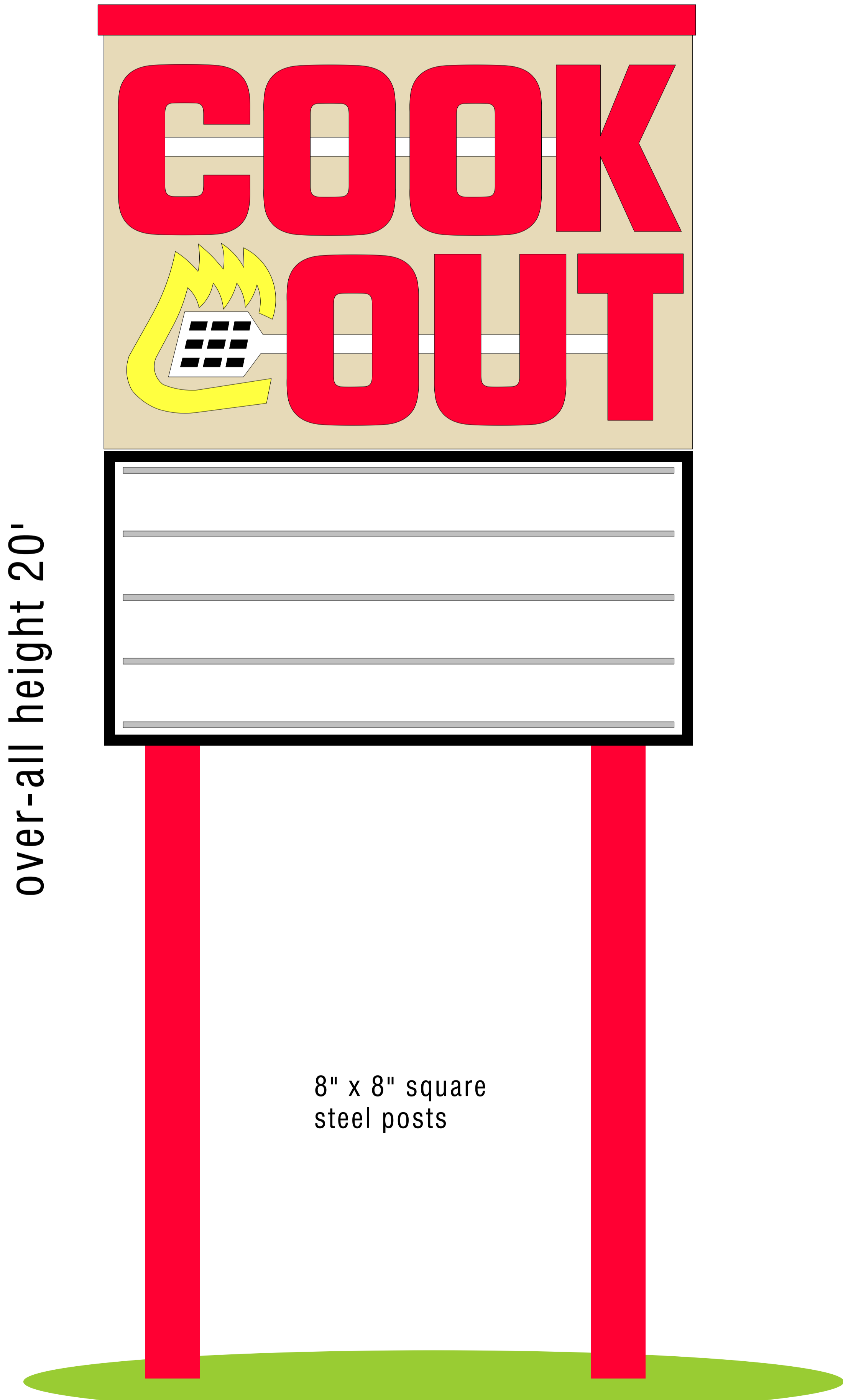
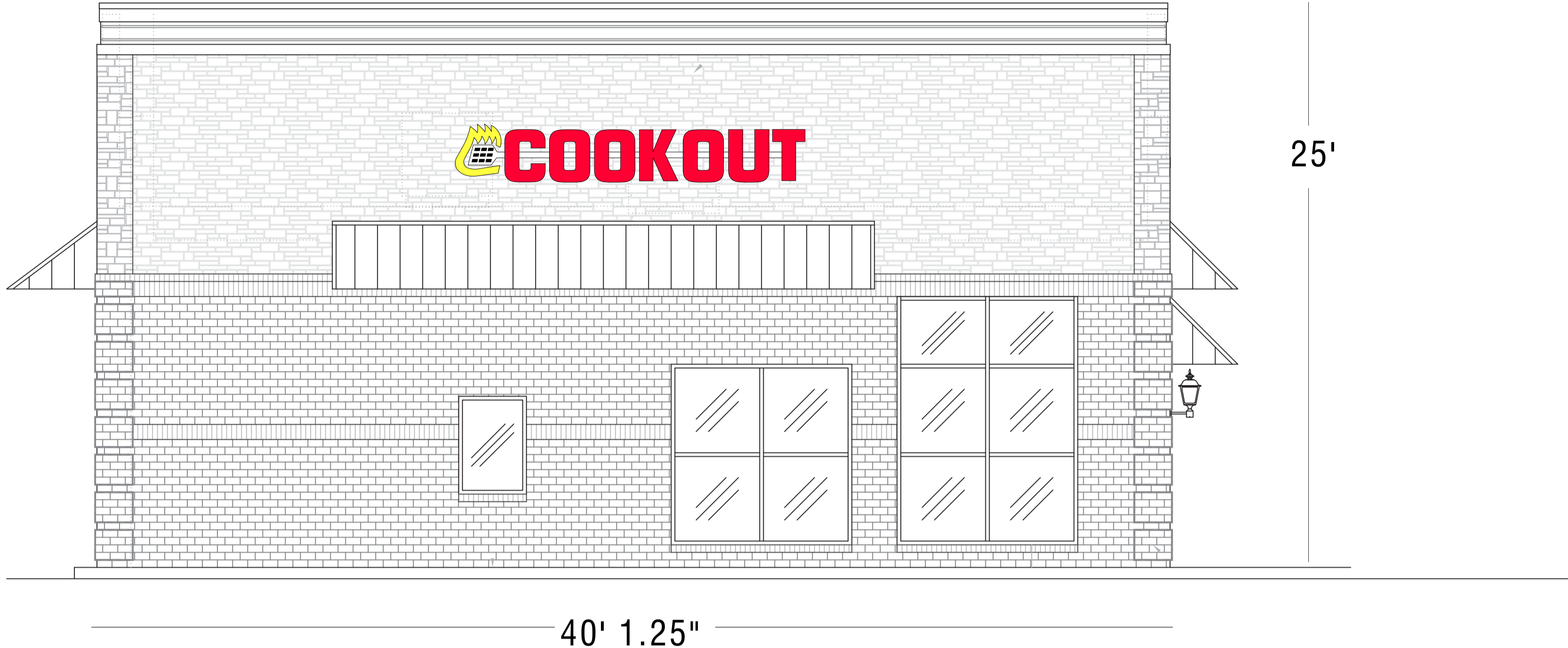


Front



16' wide x 2'6" high LOGO sign (40 sq of wall space used)
 - Lighted channel letters
 -30" Logo / LED lighted (GE LEDs)/ UL listed electrical



over-all height 20'

8" x 8" square steel posts

6'h x 8'w double sided aluminm panel sign with channel letter copy
 - 28" GE LED lighted channel letters
 - UL listed electrical
 - Powder coated finish

4' x 8' double sided reader board with pan-formed white plastic faces.
 - Changeable copy track for (4) lines of 8" on 9" changeable letters/numbers
 - UL listed electrical
 - LED lighted
 - Powder coated aluminum cabinet (black)



New - style order menus

Scope of job
 Supply and install building signs:
 - LOGO sign front
 Supply and install PYLON
 Supply and install (2) bands of NEON around building
 Supply and install (2) ORDER MENU
 Supply and install DINING ROOM MENU
 Supply and install DINING ROOM TRAY SIGN
 Supply and install DIRECTIONAL signs
 - (2) ENTER / EX sign
 - (2) DRIVE THRU directional signs

City codes:
 pylon uses 80 sq ft
 front wall sign uses 40 sq ft



803-533-7446
 313 John C Calhoun Drive
 Orangeburg SC 29115
 Linford Oberholtzer
 lin@brandritesign.com
 Mobile 803-707-4512