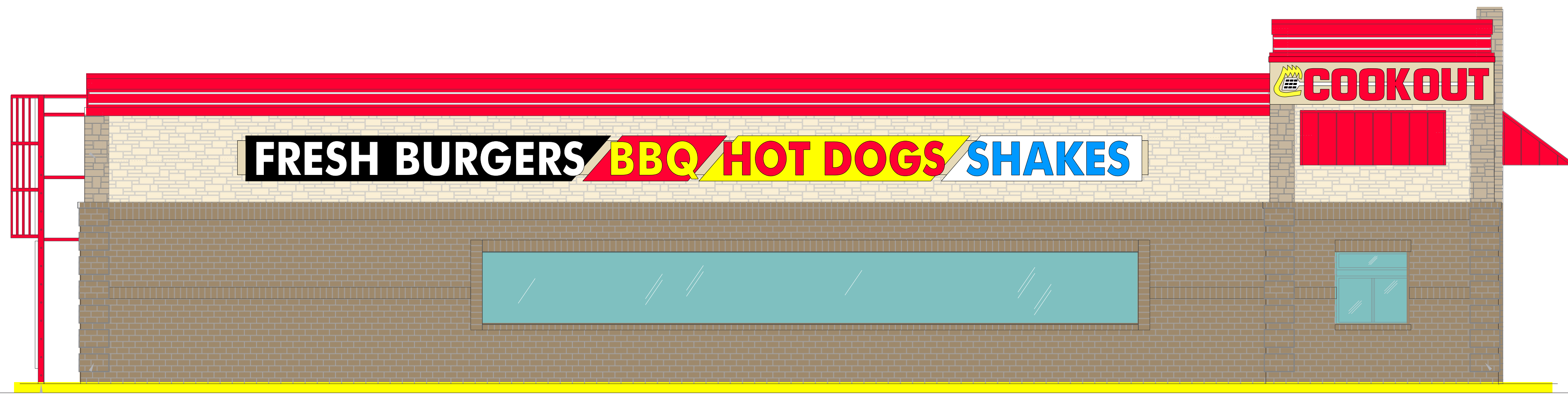
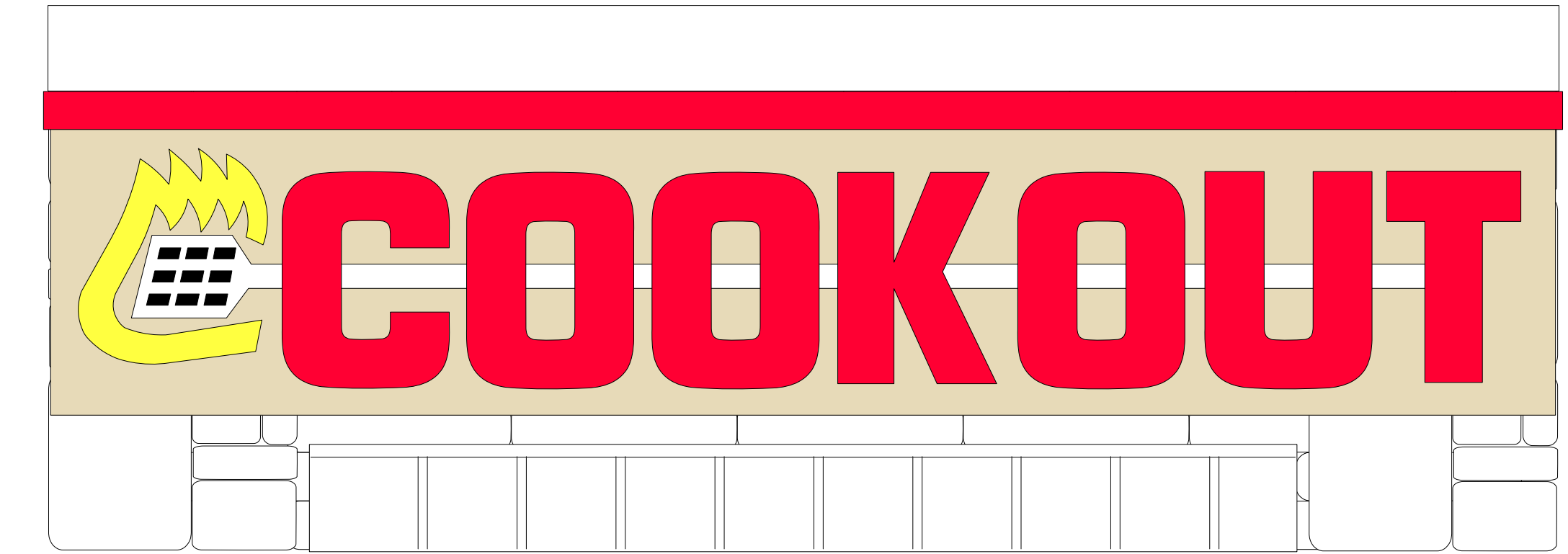


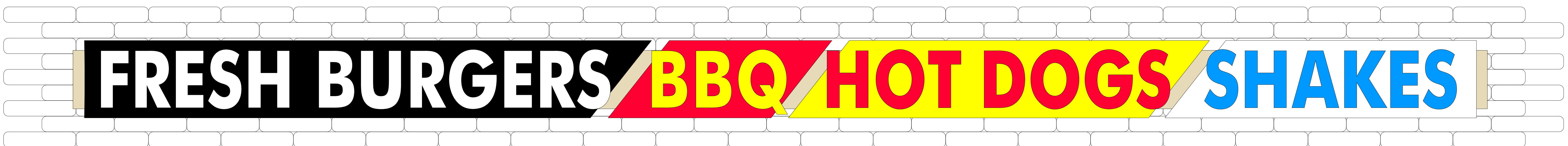
# Spring Lake NC ( 406 Lillington Hwy ) Cook Out sign drawings



LEFT SIDE ELEVATION  
SCALE: 1/4" = 1'



- 12' wide x 32" high LOGO sign
- Powder coated aluminum back-panels w/ lighted channel letters
- 24" Logo / LED lighted ( GE Tetra-max )/ UL listed electrical



( 2 ) pylons ( one 30' high and one 24' high )

- 48'9" wide x 30" high Tag Line sign
- Powder coated aluminum back-panels w/ lighted channel letters
- 24" letters / LED lighted ( GE Tetra-max )/ UL listed electrical

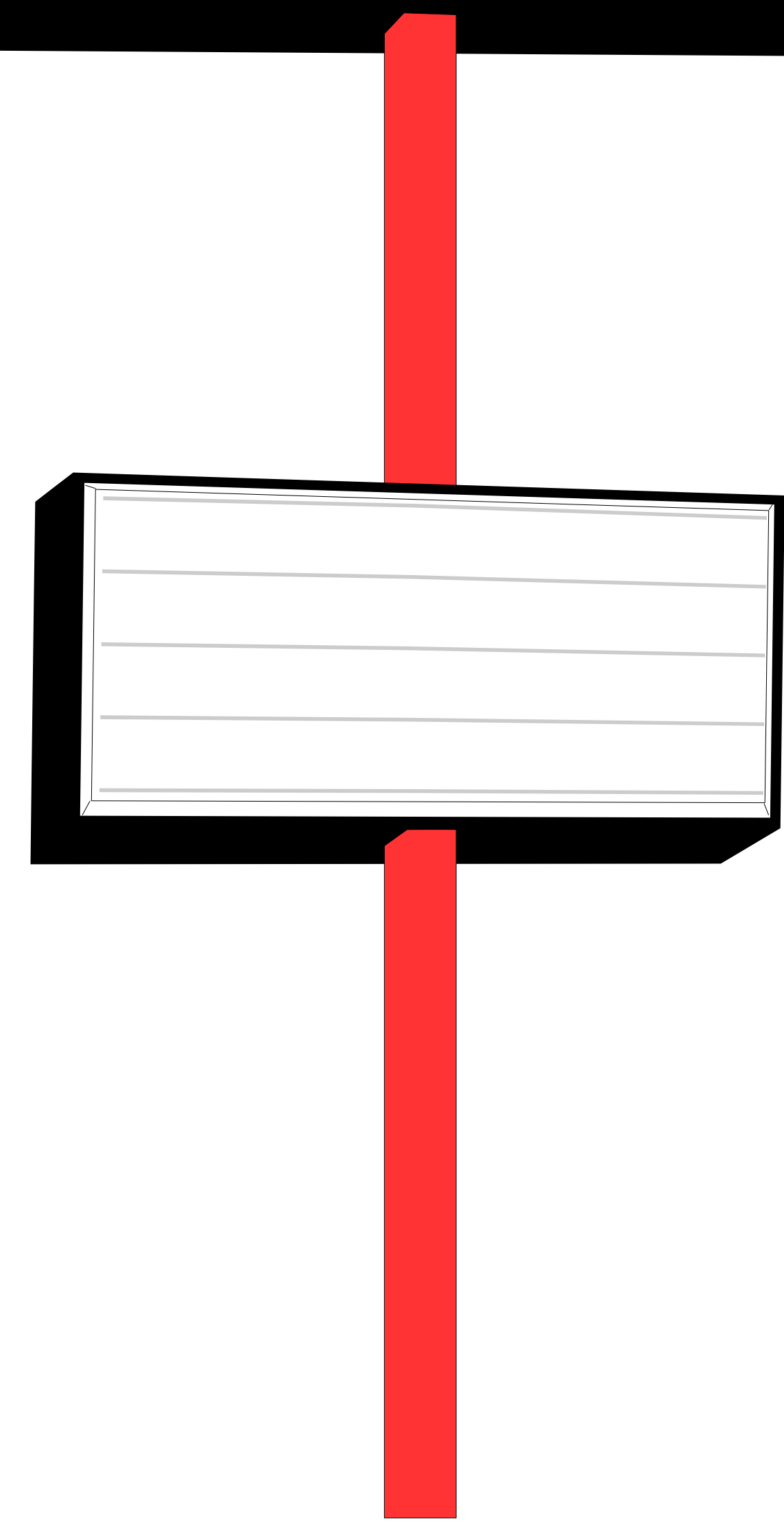


- 16' x 4'6" double sided aluminum panel sign with channel letter copy
- GE Tetra-Max LED lighted channel letters
- UL listed electrical
- Powder coated finish

Cook Out exterior menu signs  
Model FS2014



scale 3/4" = 1'



- 4' x 8' double sided reader board with pan-formed white plastic faces.
- Changeable copy track for ( 4 ) lines of 8" on 9" changeable letters/numbers
- UL listed electrical
- LED lighted
- Powder coated aluminum cabinet ( black )

City codes:  
Building 154 square is max allowed on only one side of building  
- signs use all 154 sq ft

pylon 100 sq ft max allowed  
- sign uses all 100 sq ft  
Note - second pylon is allowed by the City code



803-533-7446  
313 John C Calhoun Drive  
Orangeburg SC 29115  
Linford Oberholtzer  
lin@brandritesign.com  
Mobile 803-707-4512