

Suffolk VA Cook Out

(2) rows of white border neon 8" apart ALL THE WAY AROUND THE TOP EDGE OF BUILDING

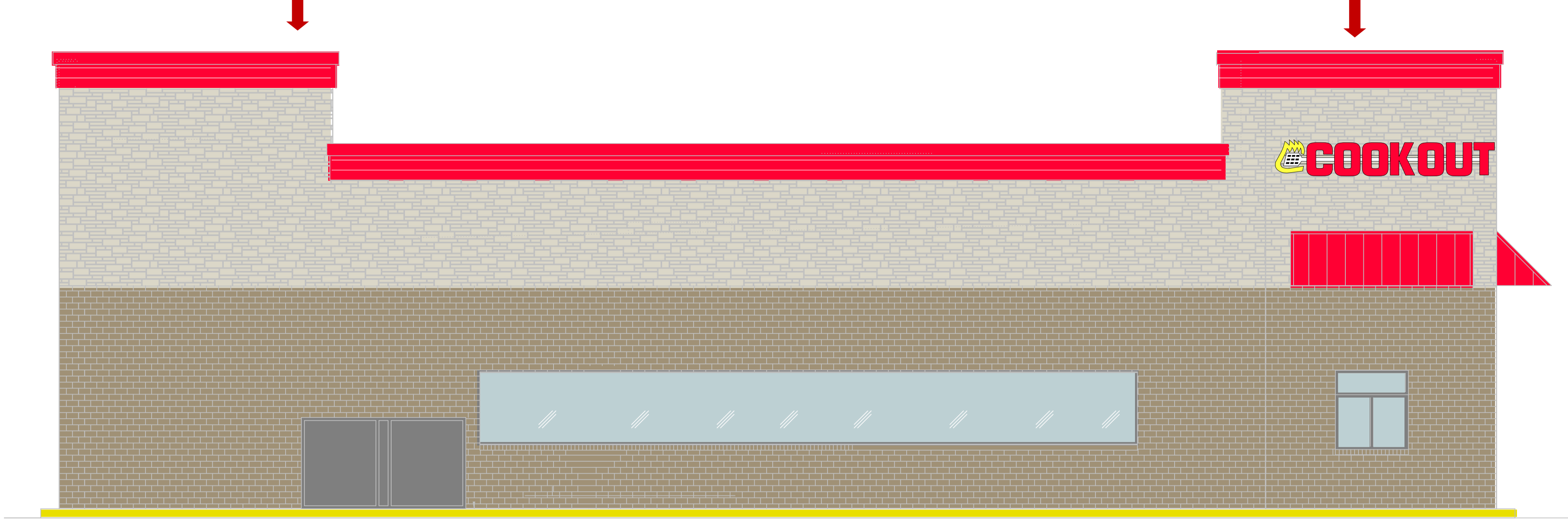
2" x 14' Lighted logo w/ 1' x 10' Fresh Ham.
 - channel letters on race-way.
 - LED lighting.
 - 5.5" deep letters
 - UL listed electrical.
 - Color matched race-way powder coated.

(2) rows of white border neon 8" apart ALL THE WAY AROUND THE TOP EDGE OF BUILDING

2" x 12' Lighted logo w/ 1' x 10' Fresh Ham.
 - channel letters on race-way.
 - LED lighting.
 - 5.5" deep letters
 - UL listed electrical.
 - Color matched race-way powder coated.



scale 1/4" = 1' FRONT ELEVATION



scale 1/4" = 1'

2" x 12' Lighted logo w/ 1' x 10' Fresh Ham.
 - channel letters on race-way.
 - LED lighting.
 - 5.5" deep letters
 - UL listed electrical.
 - Color matched race-way powder coated.

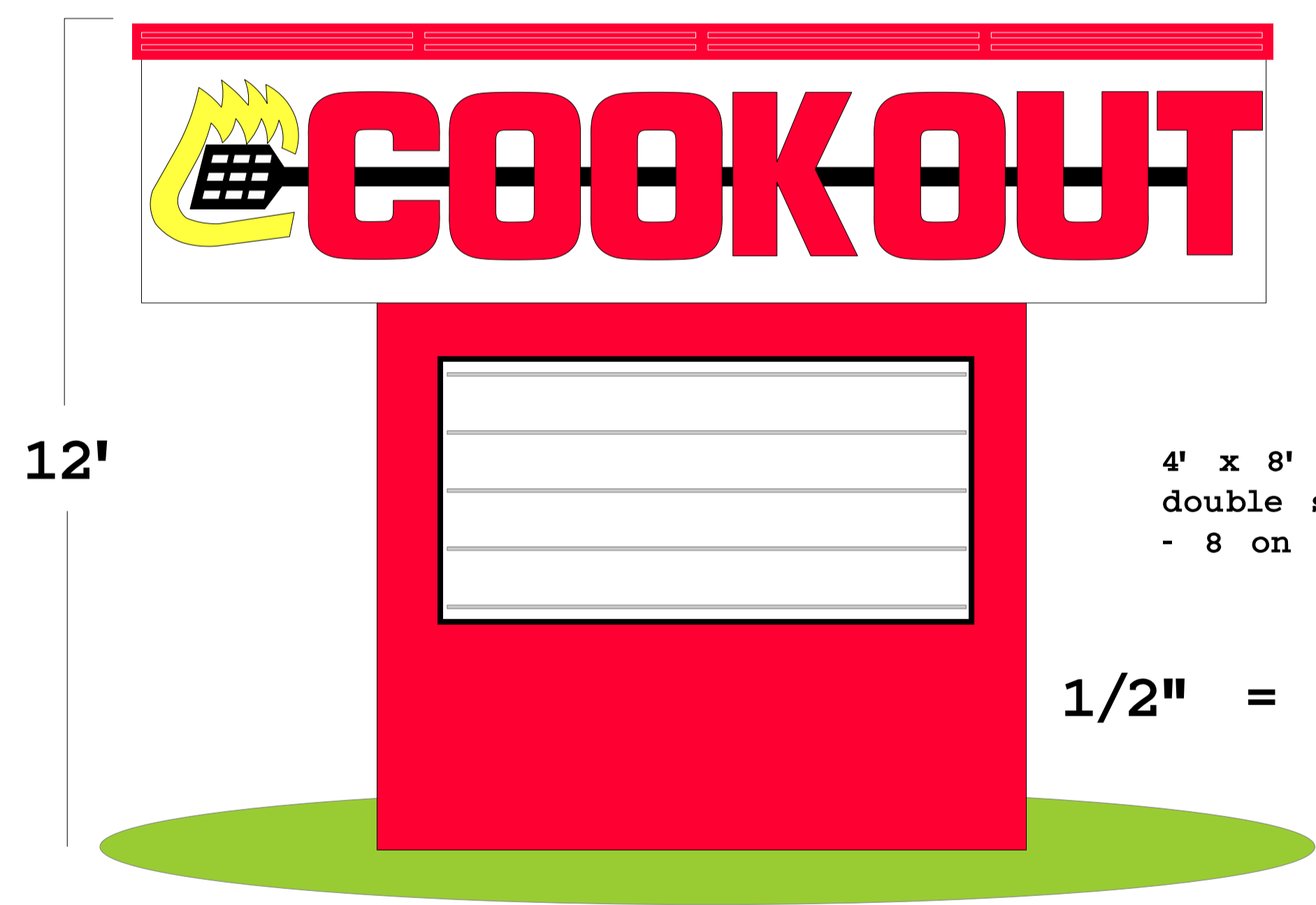
RIGHT SIDE ELEVATION 78-3/4" O/D FINISHED WALLS
 SCALE: 1/4" = 1'-0"

(2) rows of white border neon 8" apart ALL THE WAY AROUND THE TOP EDGE OF BUILDING



scale 1/4" = 1' LEFT SIDE ELEVATION
 SCALE: 1/4" = 1'-0"

4' x 17'
 double sided pylon
 - LOGO: lighted channel letters on powder coated aluminum panel background.
 - Faux neon header: cut-out aluminum w/ LED back lighting.



4' x 8'
 double sided reader board
 - 8 on 9" changeable letters

1/2" = 1'

Scope of Job:
 (supply and install the following)
 1. Channel letter Logo for building front wall.
 2. Channel letter Logo for left and right building walls.
 3. Double sided roadside sign.
 4. (2) rows of white neon around top edge of building.
 5. 4 drive-thru freestanding menus (2 preview / 2 order menus).
 6. Dining room lighted menu and lighted tray sign.
 7. Entrance sign / Exit sign and (3) drive-thru directional signs.

Cook Out exterior menu signs Model FS2014



803-533-7446
 313 John C Calhoun Drive
 Orangeburg SC 29115
 Linford Oberholtzer
 lin@brandritesign.com
 Mobile 803-707-4512