

Primary Street pylon



8' x 26'  
double sided pylon  
- LOGO: lighted channel letters  
on powder coated background.

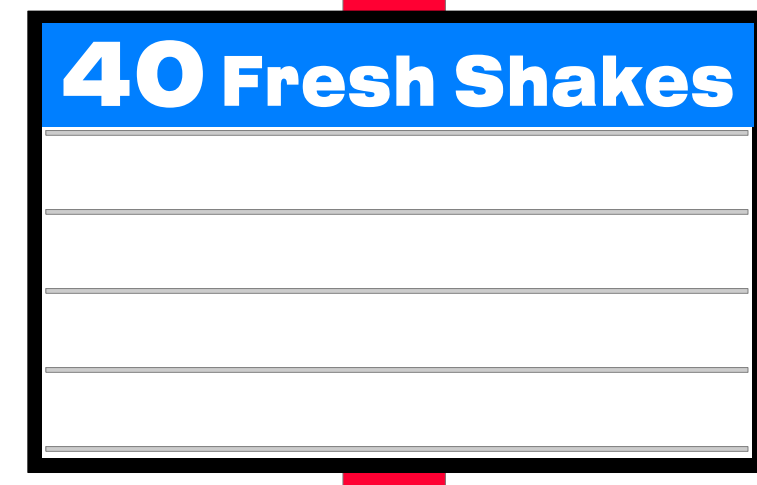
Secondary Street Pylon



8' x 9'  
double sided pylon  
w/ plastic faces

over-all  
height  
36'

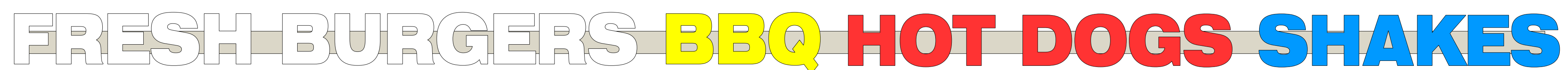
over-all  
height  
24'



5' x 8'  
double sided reader board  
- 8 on 9" changeable letters  
w/ shake header



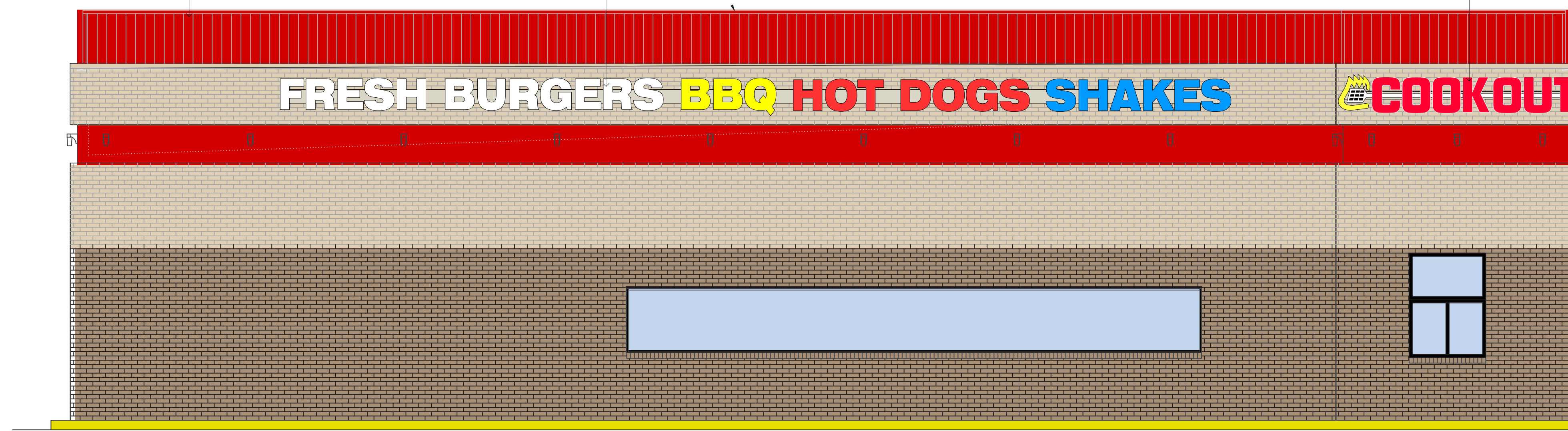
1 Logo on building front



3 Logo and tag lines on right and left side of building

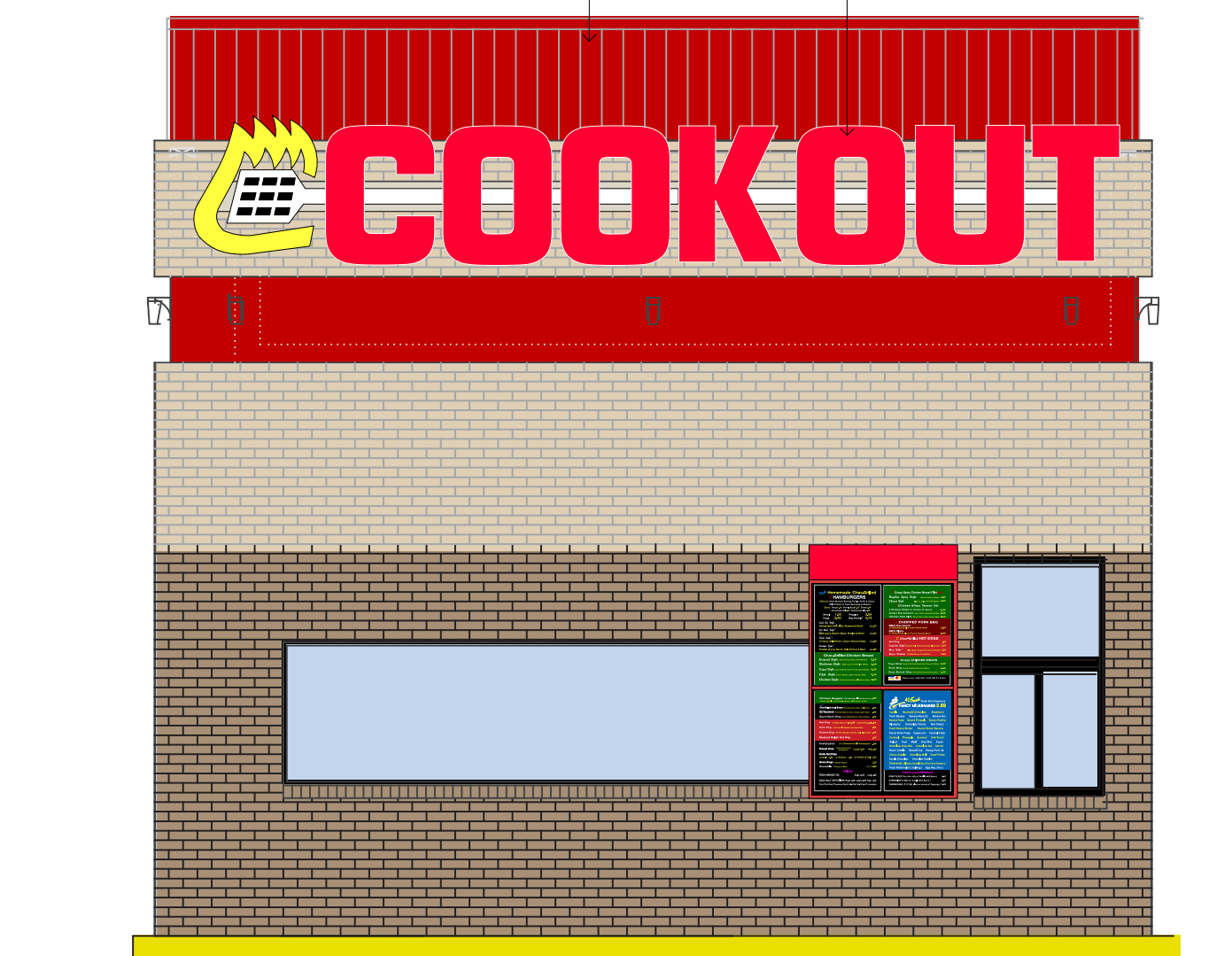
2 2 rows of white neon

3 2' x 12' logo / 48' x 2' tag line  
lighted channel letters on race-way



2 2 rows of white neon

1 21' x 42" Logo on building front  
lighted channel letters on raceway

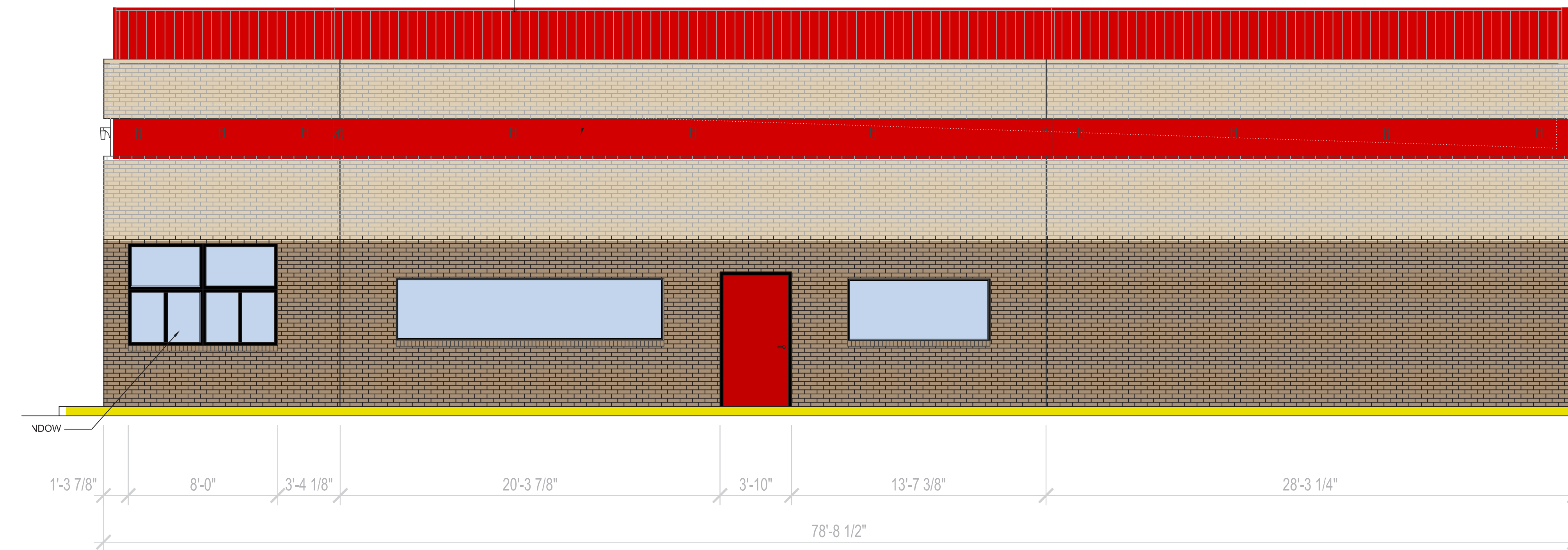


6 Walk-up menu sign

2 2 rows of white neon

1 9' x 15" Logo on building front  
lighted channel letters on raceway

2 2 rows of white neon



RIGHT SIDE ELEVATION  
SCALE: 1/4" = 1'-0"

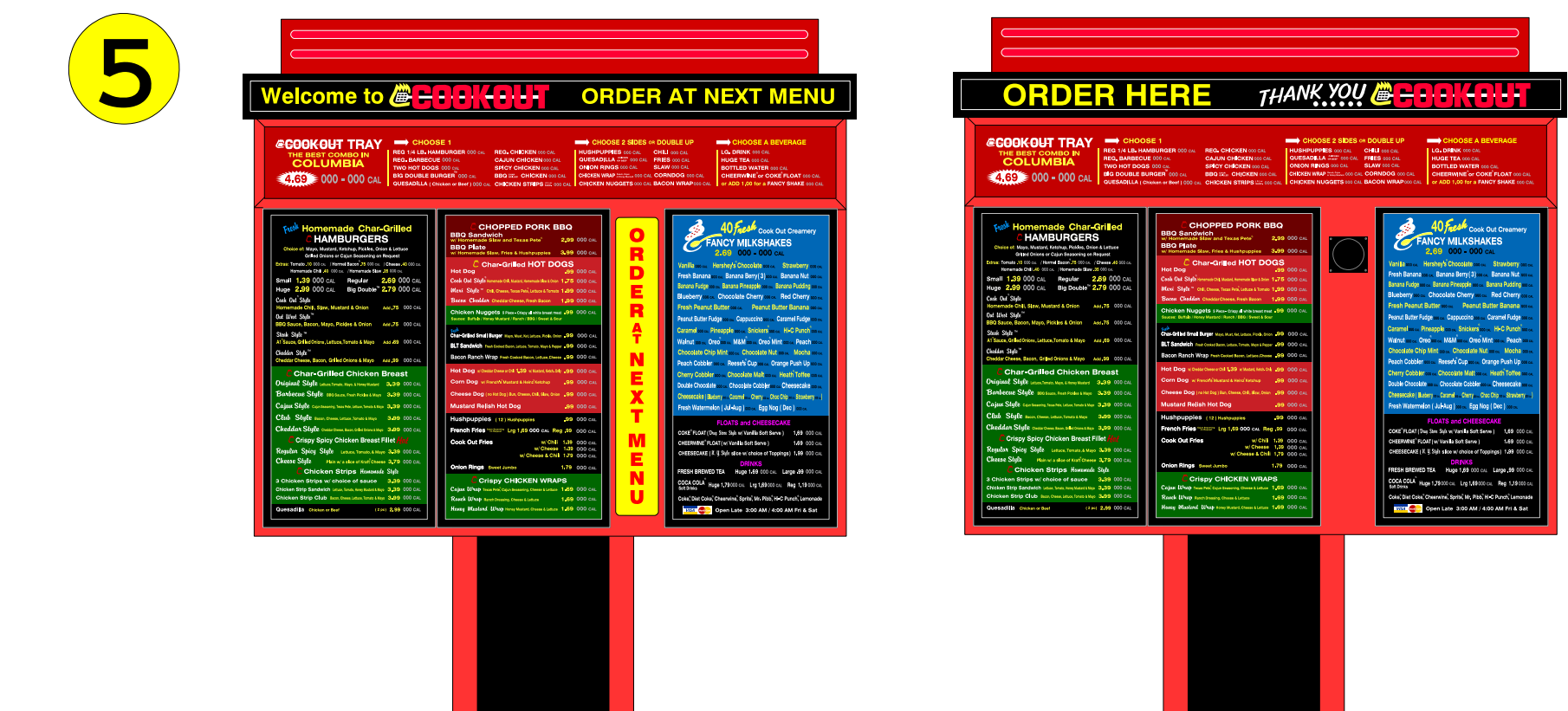


REAR ELEVATION  
SCALE: 1/4" = 1'-0"

SCOPE OF JOB

- 1 Logo on building front and back
- 2 500' of neon (2) rows of white neon border around top edge of building
- 3 Logo and tag lines on left side of building
- 4 ( 2 ) Freestanding signs :  
Primary street sign:  
- top sign ( channel letters on aluminum sign  
- reader-board  
Secondary street sign:  
- Lighted, double sided signs w/ plastic faces.  
ID sign and reader-board.
- 5 (2) drive-up preview menus.  
(2) drive-up ordering menus.
- 6 Walk-up menu sign

Cook Out exterior menu signs  
Model FS2014



scale 3/4" = 1'



803-533-7446  
313 John C Calhoun Drive  
Orangeburg SC 29115  
Linford Oberholtzer  
lin@brandritesign.com  
Mobile 803-707-4512