

Augusta GA
 (Washington Rd)
 Cook Out sign drawing

3'6" x 22'9" (80 sq ft - max allowed)
 **COOK OUT**

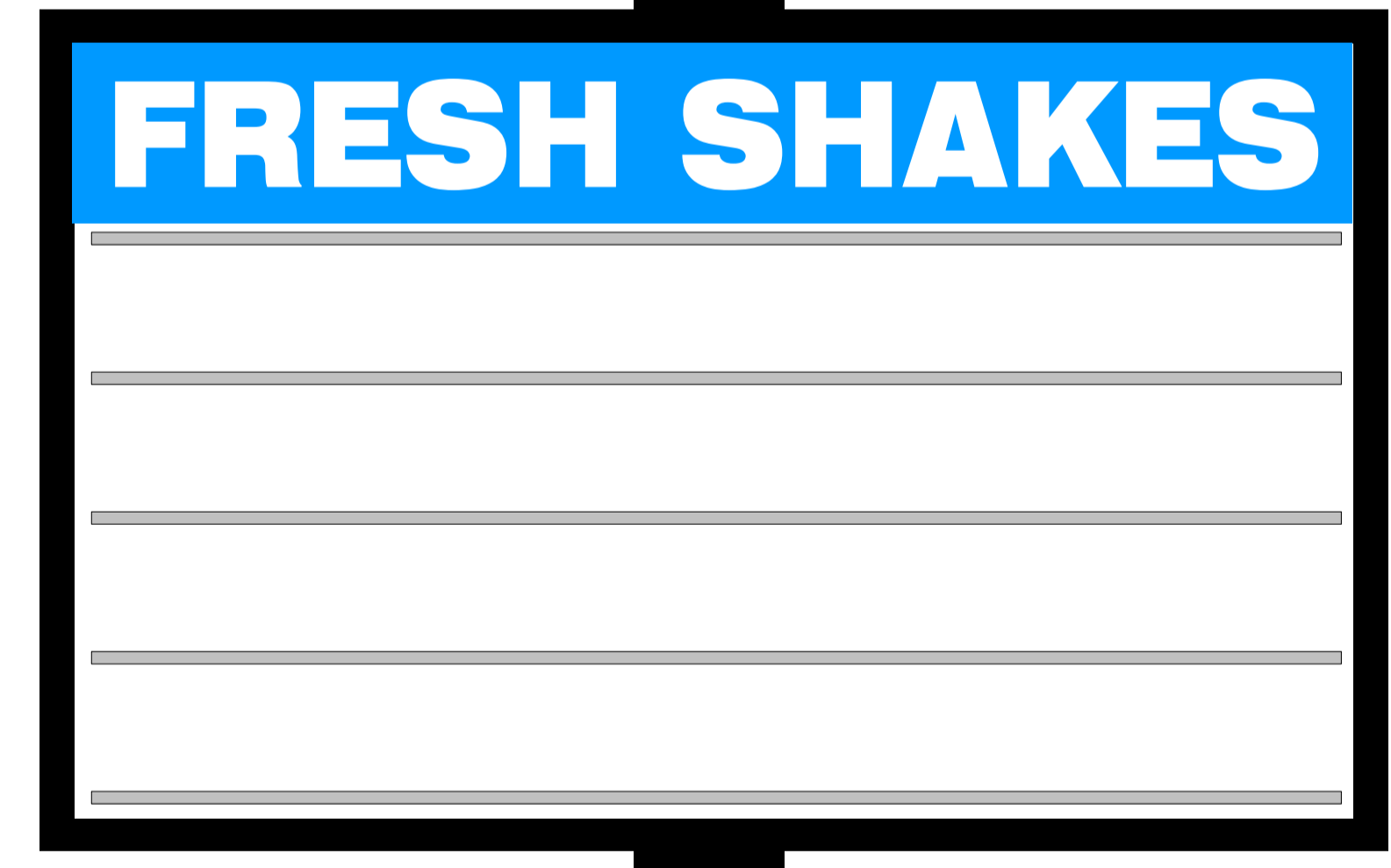
Front wall sign
 Individual lighted channel letters:
 - LED lighted
 - UL listed electrical



over-all height
 30'
 (max allowed)

Double sided roadside pylon
 9' X 11'2" aluminum sign w/
 lighted channel letters w/
 rotating 40" x 40" logo

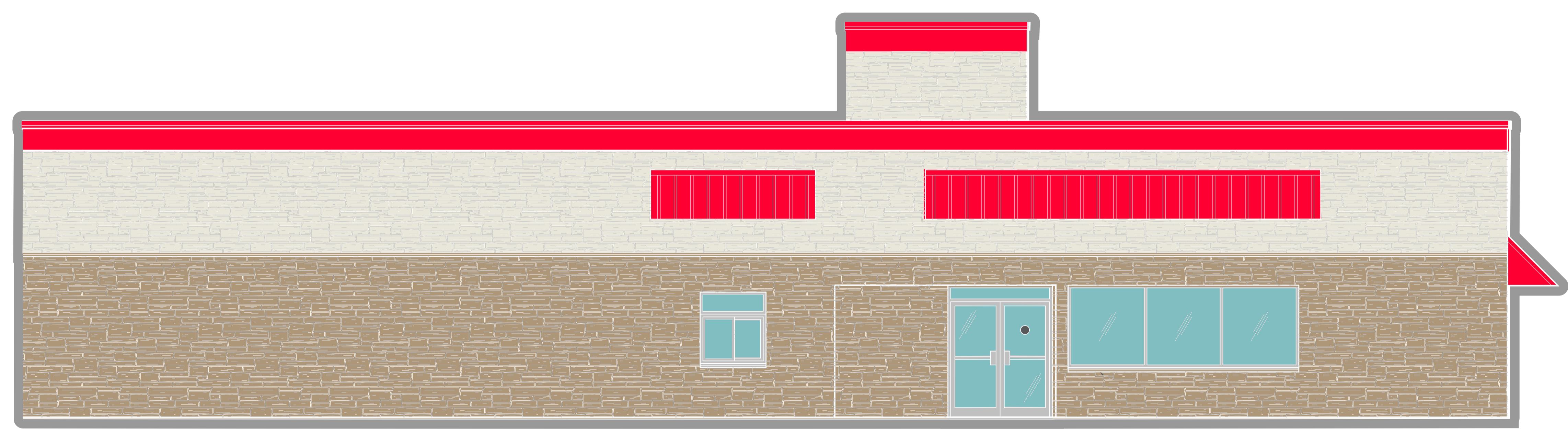
5' x 8' Readerboard



Size allowances for freestanding signs:
 Code: 200 sq ft per street frontage
 so total is 400 allowed
 Existing righ-rise 260 sq ft
 New pylon ----- 140 sq ft
 Total ----- 400 sq ft



Dining room entrance side wall sign.
 9' wide x 8'10" high.
 80 sq ft (max allowed)
 Cook Out logo:
 - lighted channel letters
 Tag line area:
 - flat aluminum w/ reversed cut-out letters backed w/ colored plastic
 Electrical UL
 Powder coated aluminum cabinet.



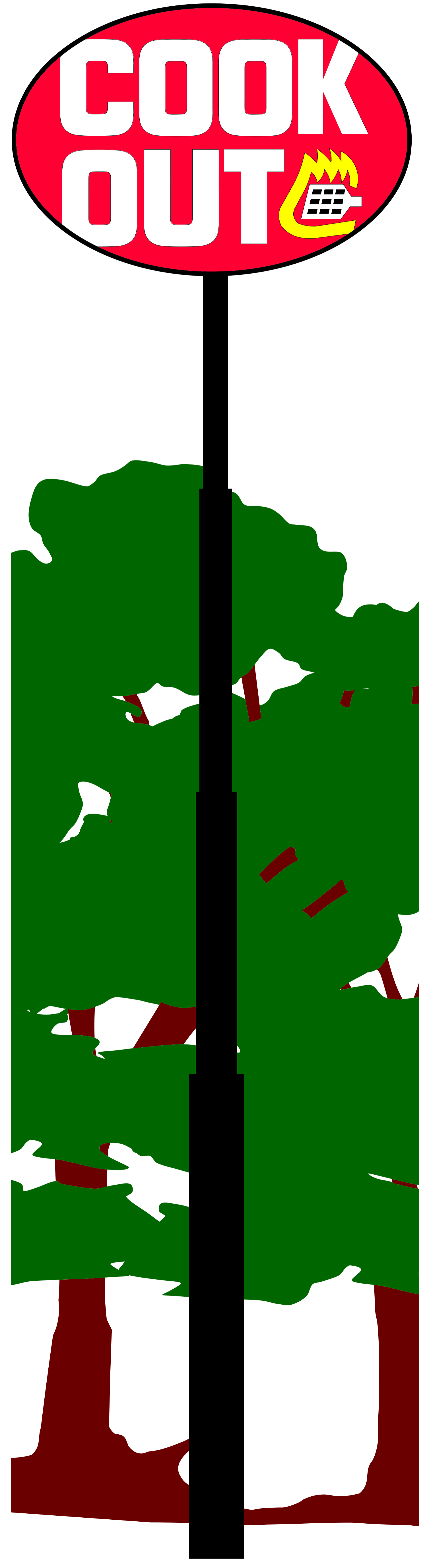
SCOPE OF JOB

- A Front wall Building sign (Logo)
- B Side wall sign (logo / tag line)
- C New (Washington Rd) pylon
- D Re-furb existing high-rise pylon
- E (2) rows of white border neon on building
- F Supply and Install lighted menus
 - (1) drive-up ordering menu
 - (1) drive-up preview menu
 - Dinning room menu

6' high x 6' wide



Existing High-rise double sided pylon
 100' tall sign 20'x13'
 Refurbish:
 - New faces, new lighting and repaint cabinet and pole.



803-533-7446
 313 John C Calhoun Drive
 Orangeburg SC 29115
 Linford Oberholtzer
 lin@brandritesign.com
 Mobile 803-707-4512