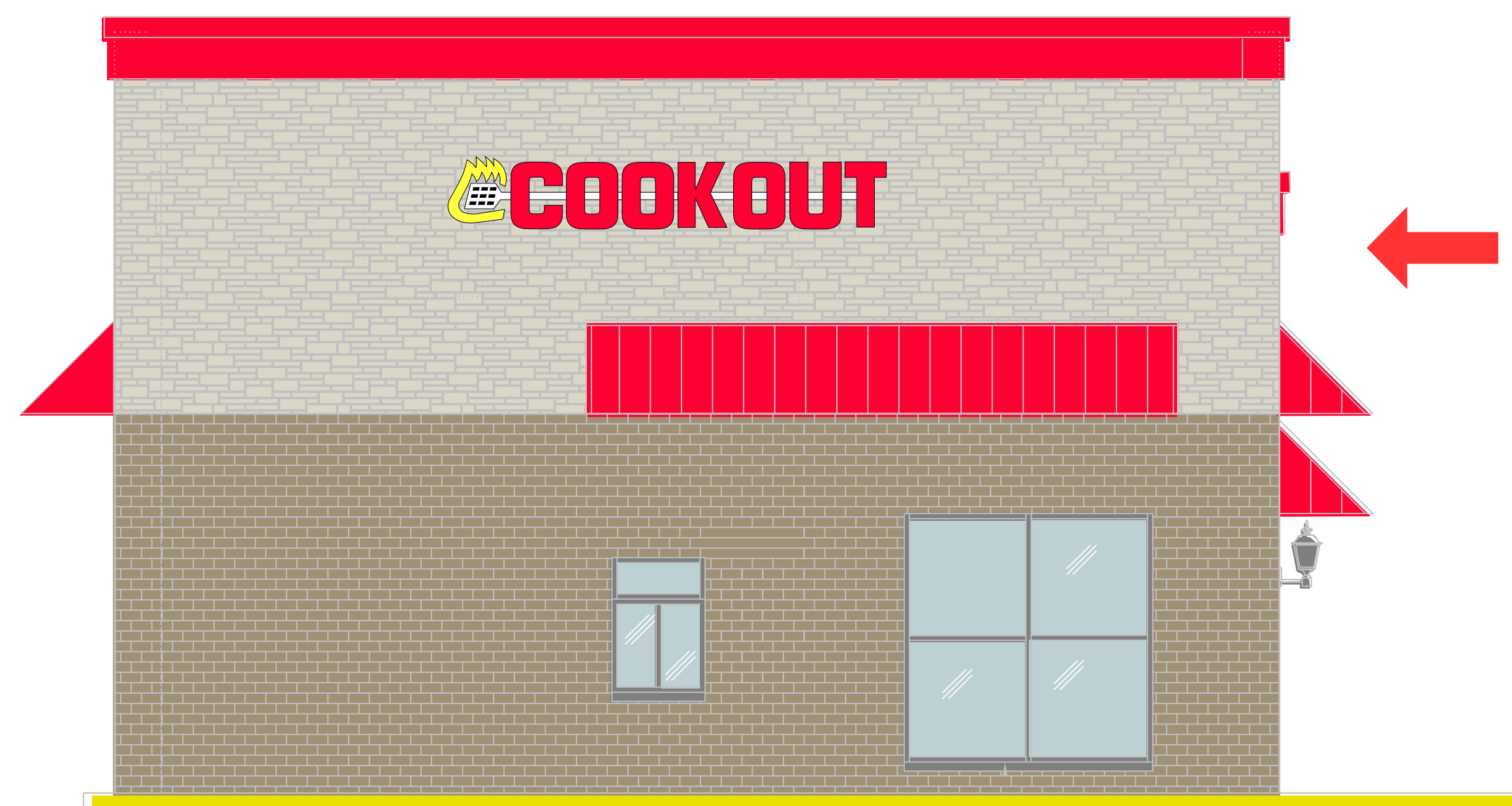


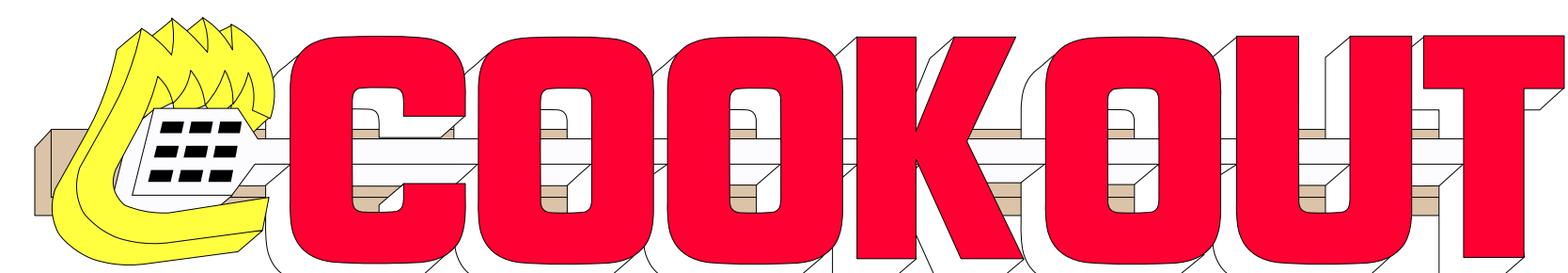
COLUMBIA (Bush River Rd) SC COOK OUT



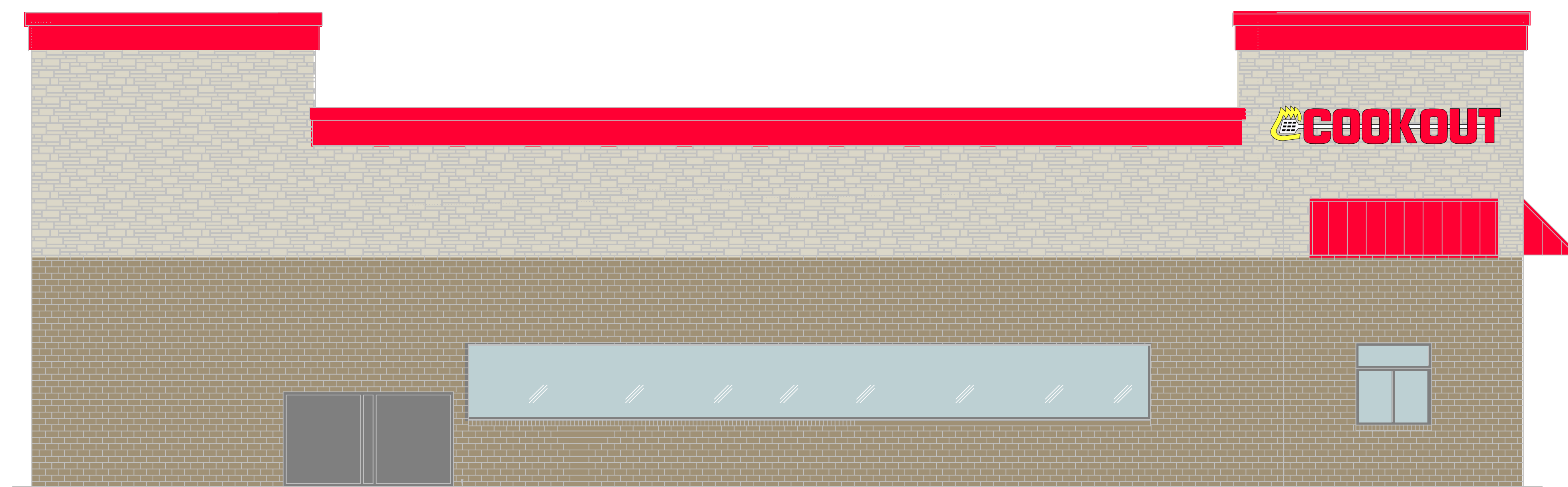
FRONT ELEVATION

SCALE: 1/4" = 1'-0"

1



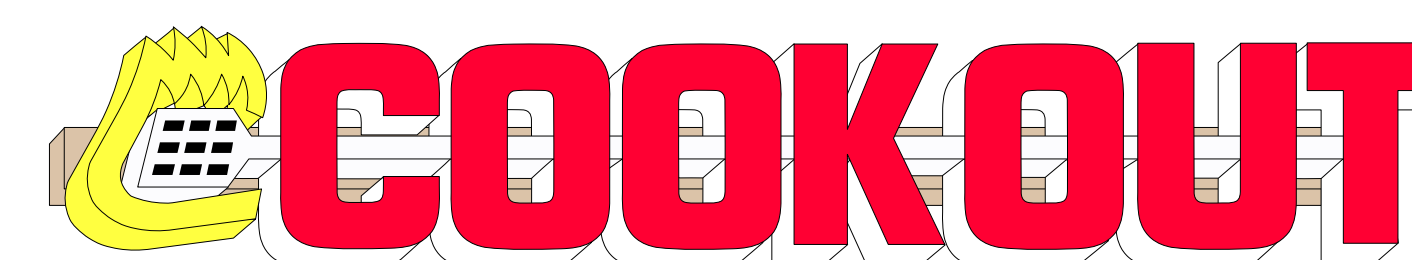
- Lighted logo
- Channel letters on race-way.
 - LED lighting.
 - 5.5" deep letters
 - UL listed electrical.
 - Color matched race-way paint.



RIGHT SIDE ELEVATION 76-8 1/2" O/D FINISHED WALLS

SCALE: 1/4" = 1'-0"

2



- Lighted logo w Frsh Ham:
- Channel letters on race-way.
 - LED lighting.
 - 5.5" deep letters
 - UL listed electrical.
 - Color matched race-way paint.



LEFT SIDE ELEVATION

SCALE: 1/4" = 1'-0"



LED lighted faux neon cut into Powder coated aluminum topper

Lighted channel letters mounted to Powder coated aluminum sign cabinet

top sign 25' wide x 7' high

3

re-use the existing pylon posts

FRESH BURGERS BBQ
HOT DOGS 40 SHAKES

bottom sign 13' wide x 6' high

Cook Out exterior menu signs Model FS2014

4



- Specifications
- Main cabinet: formed and welded aluminum
 - Menu insert frames: 1/8" x 1' aluminum frames (welded)
 - Legs / leg panels: 3" steel / aluminum
 - Finish: all powder coated (no paint anywhere on units)
 - Lighting: premium LED w/ twin power systems (primary and back-up)
 - Back-lighted topper: formed aluminum w/ acrylic inserts LED lighting
 - Printed menu area: UV printing directly on .040 polycarbonate

SCOPE OF JOB

- 1 Front of building signs:
 - 2'3" x 14' logo (31 sq ft each)
- 2 Left and Right side of building signs:
 - 2' x 12' logo (24 sq ft each)
- 3 Freestanding signs:
 - 25' x 7' top sign
 - 13' x 6' reader board / Tag Line sign
- 4 (2) drive-up preview menus.
- 5 (2) drive-up ordering menus.
- 6 Interior menu and lighted tray sign **not pictured**
- 7 - 560' of white neon (2 lines of border around top of building.



803-533-7446
313 John C Calhoun Drive
Orangeburg SC 29115
Linford Oberholtzer
lin@brandritesign.com
Mobile 803-707-4512