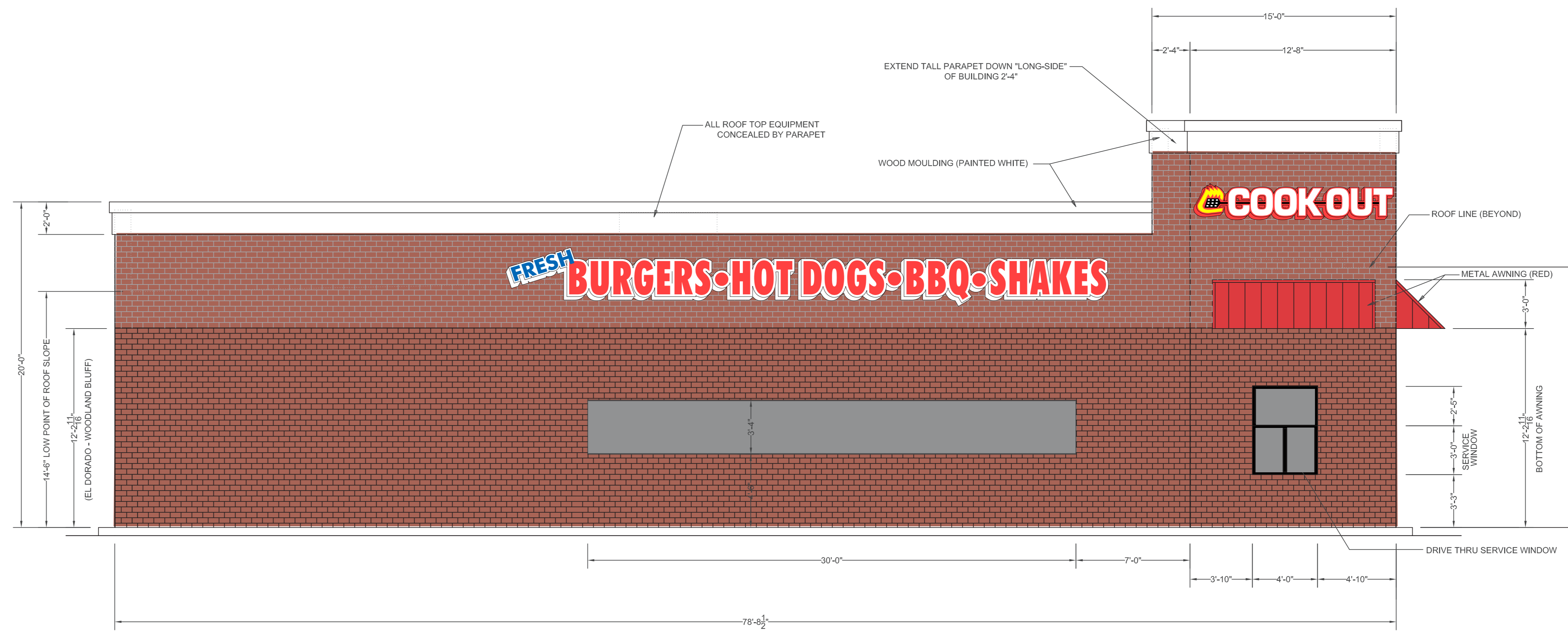




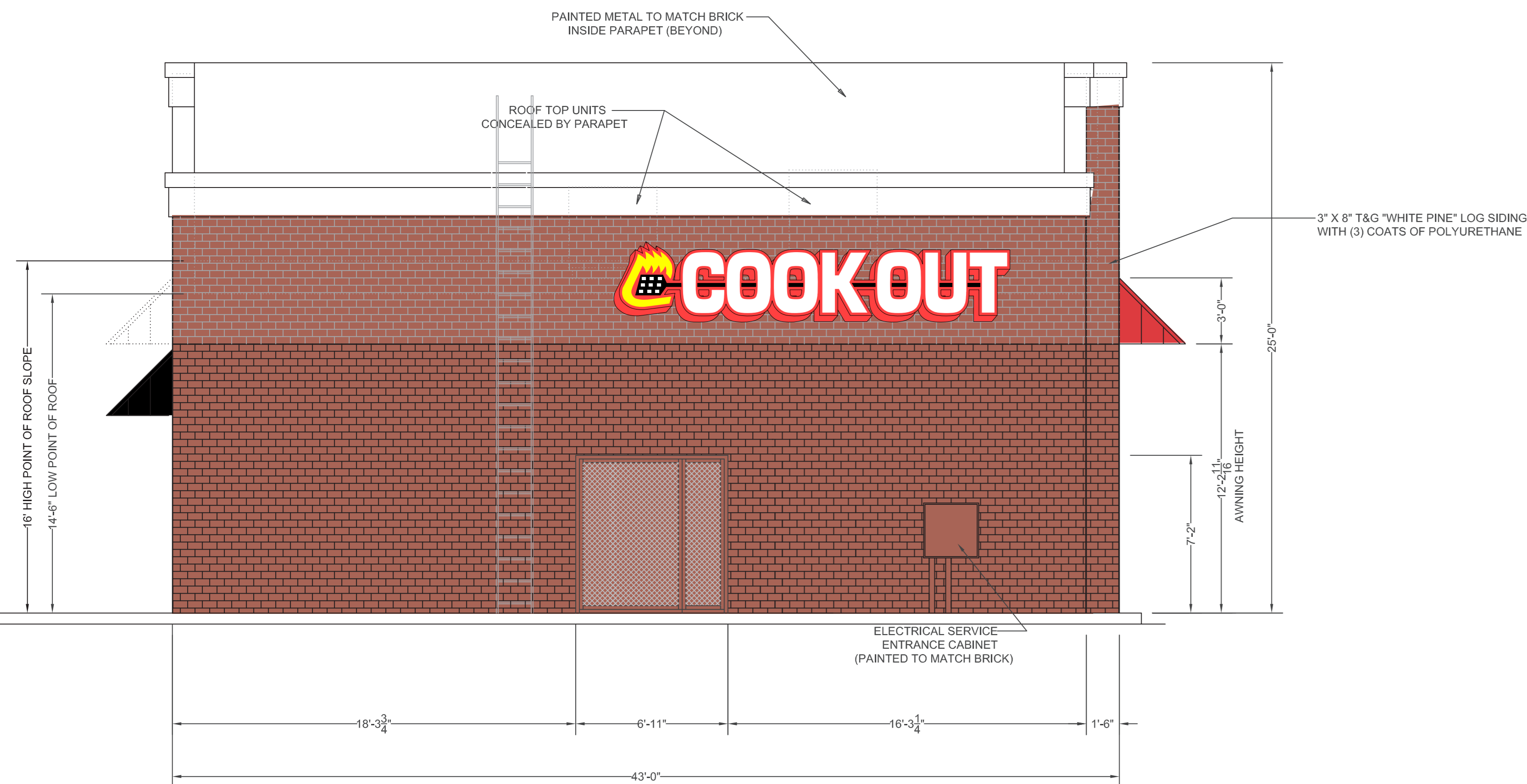
FRONT ELEVATION

SCALE: 1/4" = 1'-0"



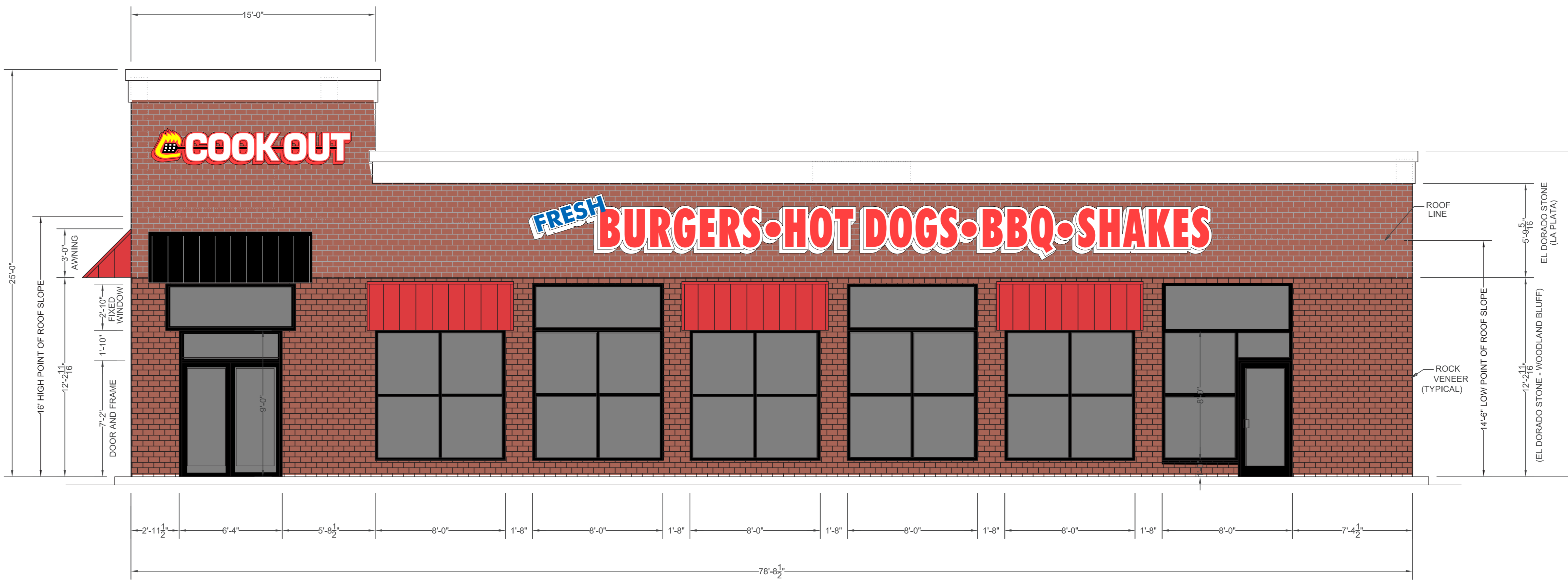
LEFT SIDE ELEVATION

SCALE: 1/4" = 1'-0"



REAR ELEVATION

SCALE: 1/4" = 1'-0"



RIGHT SIDE ELEVATION

SCALE: 1/4" = 1'-0"

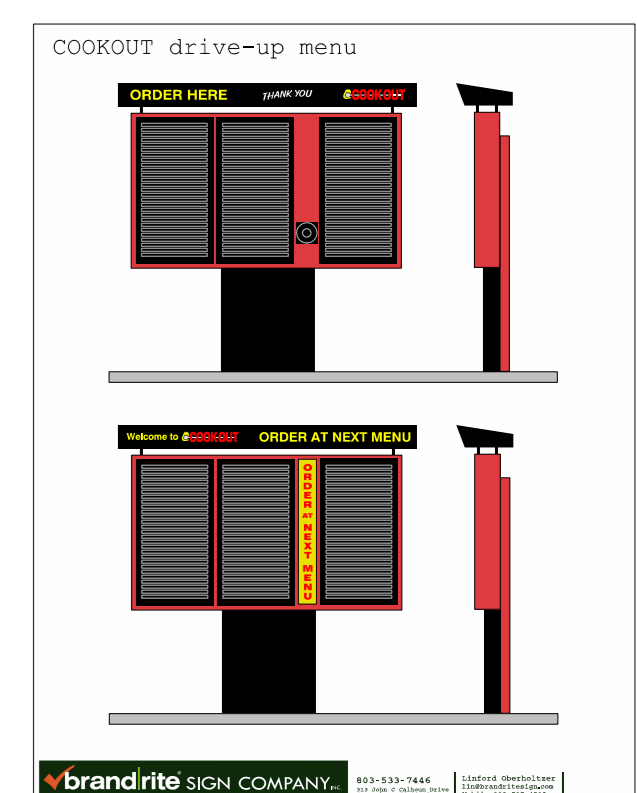
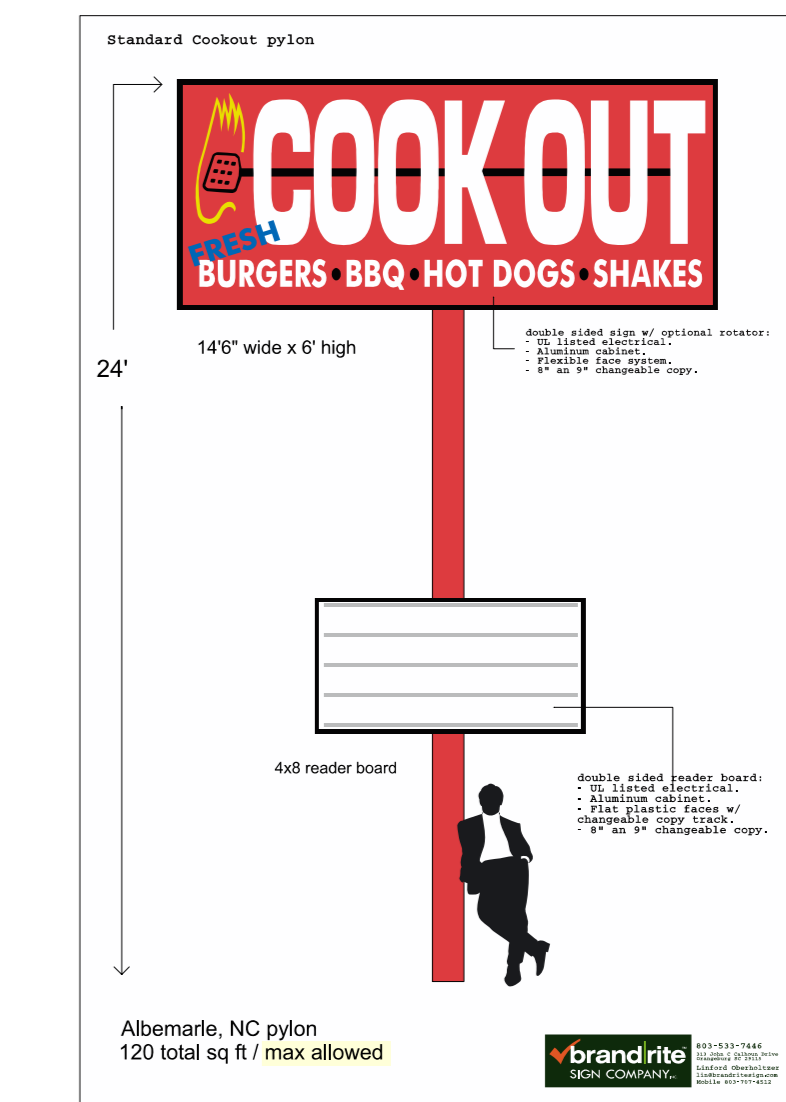
Product list for Albemarle NC Cook Out

**A** (2) rows of white neon on all 4 sides of building (494' total)

**B** Building signs

Location	Sign Description	Dimensions	Area
Front (entrance side)	COOK OUT	24' x 12'	24 sq ft
	FRESH BURGERS-HOT DOGS-BBQ-SHAKES	30' x 42'	109.5 sq ft
Left side of building (HWY side)	COOK OUT	24' x 12'	24 sq ft
	FRESH HAMBURGERS	3' x 18'	72 sq ft
Back of building	COOK OUT	24' x 12'	24 sq ft
	FRESH BURGERS-HOT DOGS-BBQ-SHAKES	2' x 34'	72 sq ft
Right side (Wall Mart side)	COOK OUT	3' x 18'	54 sq ft

City allows up to 386 sq ft of building wall signs, this package uses 385 sq ft.



BUILDING SIGN DRAWING

Cook Out restaurant of Albemarle, NC

803-533-7446

313 John C Calhoun Drive Orangeburg SC 29115

Linford Oberholtzer

lin@brandritesign.com

Mobile 803-707-4512