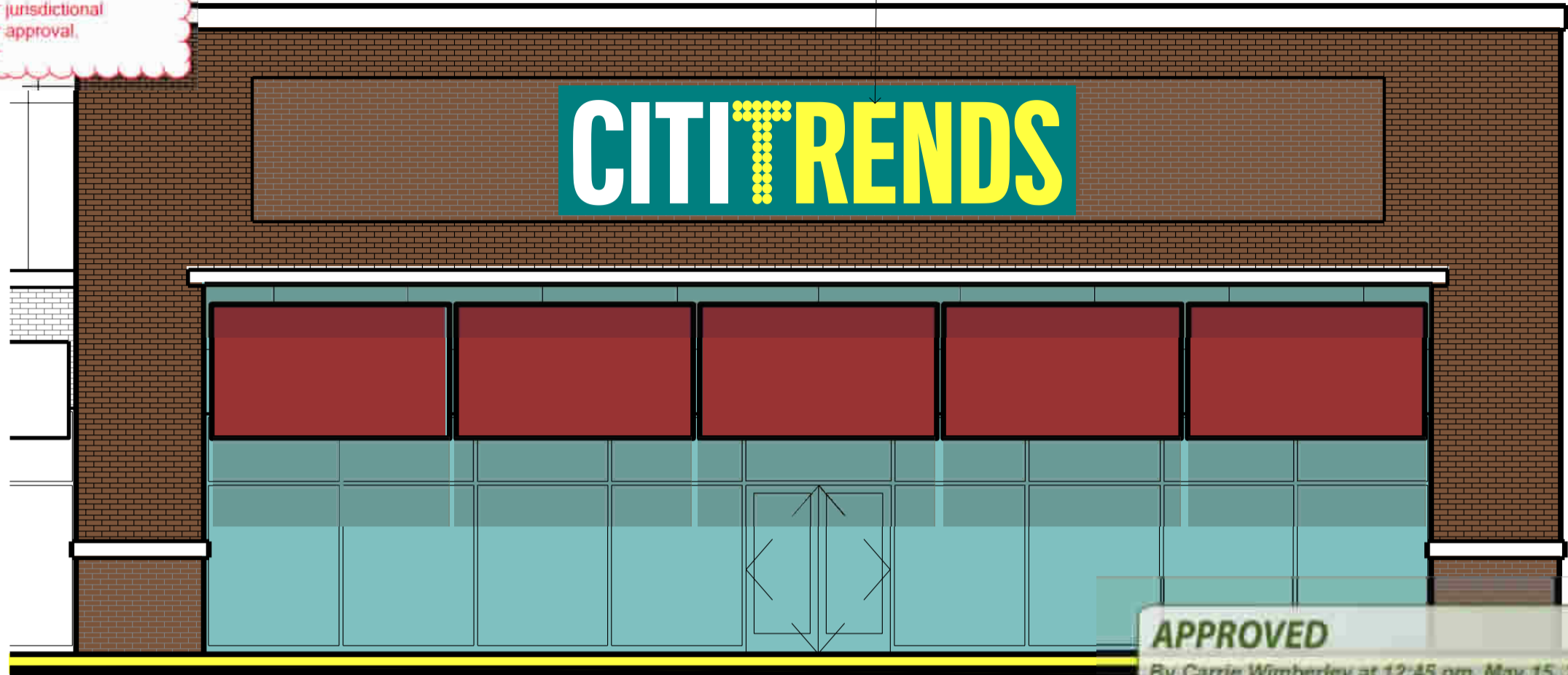


Scope of project:
Supply and install new lighted sign on store front.

Tenant shall be responsible for meeting all applicable codes and obtaining all jurisdictional approval.

4' channel letters on a 5' x 20' aluminum back board.



store front 60' wide

APPROVED
By Carrie Wimberley at 12:45 pm, May 15, 2015



Lighted channel letters on painted aluminum backboard:
- Led lighting
- UL listed electrical

FINAL APPROVAL OF DRAWINGS

RED LEGACY, LLC.

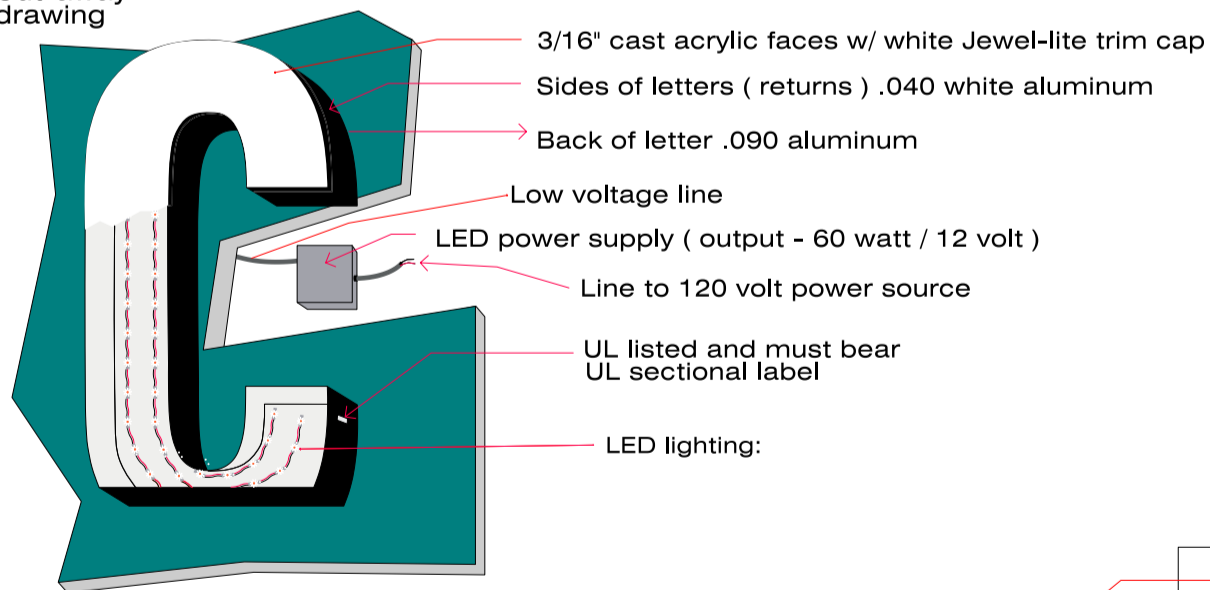
APPROVED
APPROVED AS NOTED
RETURNED FOR CORRECTIONS

The approval of working drawings are subject to the following:

- All previous review comments
- Local code and jurisdictional approval
- Terms and Conditions of the Lease Agreement

The sole purpose of the drawing review by the Landlord's Architect was an evaluation of their consistency with the aesthetic components of both the established criteria booklet and Landlord's design requirements. By reviewing these drawings and providing comments, neither the Landlord nor its agents assume responsibility for code compliance, compliance with all aspects of the criteria booklet and Landlord's design requirements, dimensional accuracy, engineering adequacy, or completeness of these drawings for construction purposes. Tenant remains solely responsible for compliance with all aspects of the criteria booklet, Landlord's design requirements, codes, regulations, standards, and all other applicable laws and guidelines.

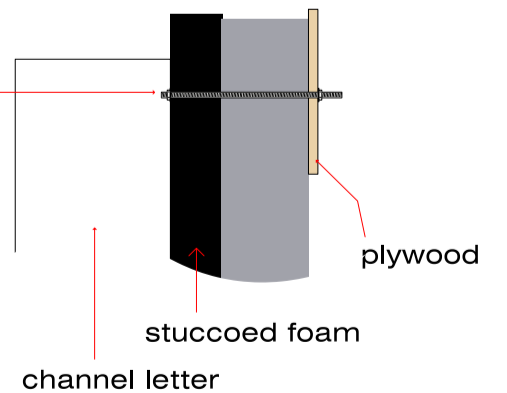
Cut-away drawing



Transformers shall be concealed from public view and accessible from within the tenant space.
UL labels and manufacturer stickers are required but shall not be visible to public view.

LL prefers "backer" panel be mounted a minimum of 1" off the face of the building.

Mounting - fasteners must go through material in or behind wall such as 3/4" plywood or sheet metal, never fasten only in stuccoed foam veneer,



Signs will be constructed and permitted to meet all applicable city/county sign codes.

Citi Trends Store # 353
(Truman Marketplace S/C)
12124 S. US Hwy 17
Grandview MO



803-533-7446
313 John C Calhoun Drive
Orangeburg SC 29115
Linford Oberholtzer
lin@brandritesign.com
Mobile 803-707-4512