

ORANGE STATE REALTY, INC.

711 St. Anthony Avenue

Effingham, Il. 62401

Phone: 217-342-3800 Fax: 217-342-5646

Facsimile Transmittal Sheet

Send to: Citi Trends #285

From: Surenwa Agarwal

Attn: Andy Beisel

Date: 5-9-11

Fax: 912-443-3085

Tel: _____

Urgent Comment

For Review

Please Reply

For Your Information

Total Pages Including Cover Sheet 4

Comments:



May 4, 2011

VIA EMAIL: mellorpark@yahoo.com

Surenda Agarwal, M.D.
Orange State Realty, Inc.
711 St. Anthony
Effingham, IL 62401

RE: Citi Trends #0285
Mellor Park Mall
El Dorado, AR

Dear Surenda:

Citi Trends is updating its graphics and store features in all of its new stores and a select group of existing stores, which includes its store at Mellor Park Mall. This updated look includes a new logo, which will be installed on the exterior of the store and pylon. We have enclosed the plans for the new sign graphics, as well as information about the new store look. Please approve the new signage and the store elevation by signing the enclosed copy of this letter where indicated below, initialing the plans, and returning the letter and the plans to my attention via fax or email.

Thank you. We look forward to continued success at Mellor Park Mall.

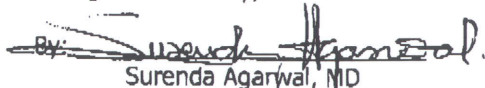
Sincerely,

CITI TRENDS, INC.

Andy Beisel
Regional Director, Real Estate

Approved:

Orange State Realty, Inc.

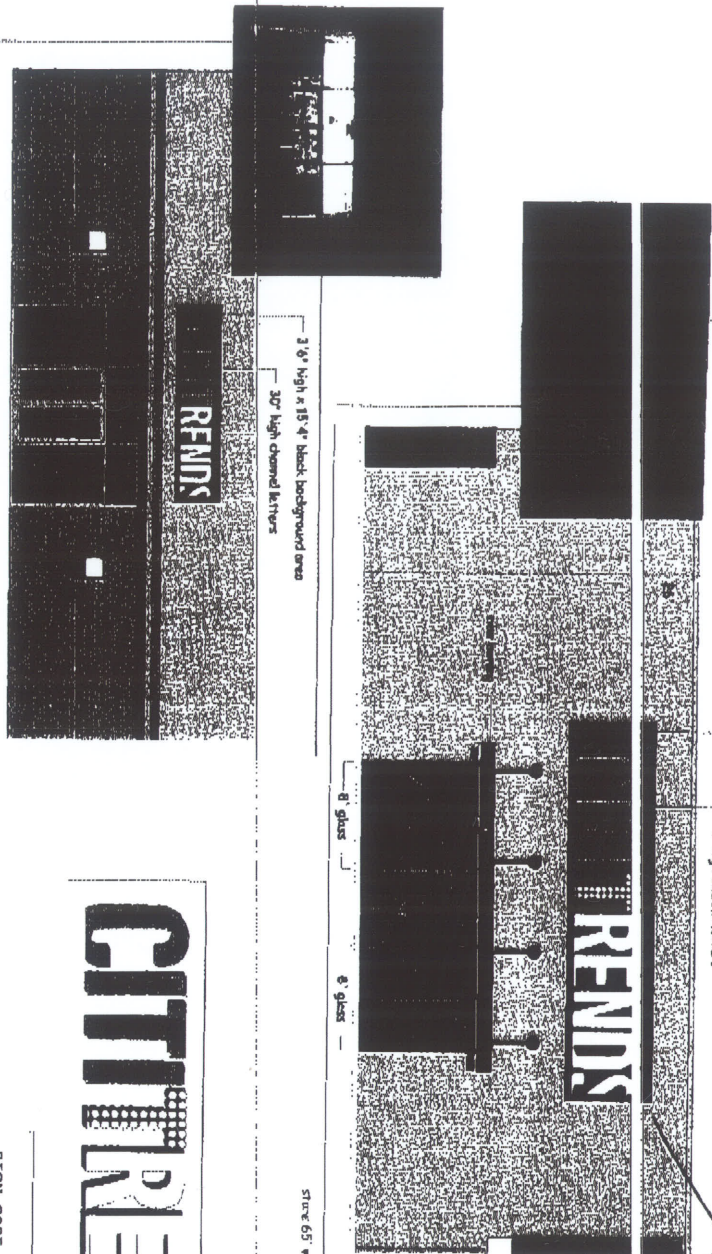
By: 
Surenda Agarwal, MD
Its: President

building sign drawing

Revision 2 5/2/11

Job summary: - one exterior building / one inside mall sign
- One roadside pylon

black EFIS or ALUMINUM area behind channel letters



CITTY RENDIS

Channel letters mounted without race-way

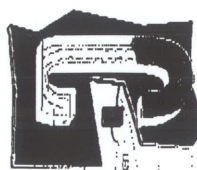
- LED lighting
- Aluminum backs and sidewall w/ acrylic faces
- UL listed electrical
- 9 year translucent vinyl graphics

SIGN CODE - 200 sq ft max
This sign uses 199 sq ft.

Citi Trends Store # 285
Miller Park Mall
211 N. West Av.
El Dorado, AR 71730

brand rite
SIGN COMPANY

803-533-7446
311 John C. Pabon Dr. #100
Oxford, MS 38655
Johnd@brandrite.com
Johnd@brandrite.com
Mobile 803-707-4312

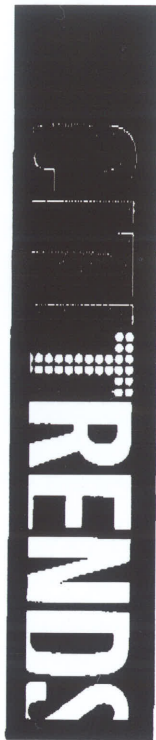


3 1/2" wide front - flange to upper shoulder 1 1/2" deep
3" wide of back - flange to lower shoulder 1 1/2" deep
1 1/2" wide of base - flange to bottom
1 1/2" wide of top - flange to top
1 1/2" wide of side - flange to side
1 1/2" wide of bottom - flange to bottom
1 1/2" wide of top - flange to top
1 1/2" wide of side - flange to side
1 1/2" wide of bottom - flange to bottom
1 1/2" wide of top - flange to top
1 1/2" wide of side - flange to side
1 1/2" wide of bottom - flange to bottom

roadside pylon sign drawing

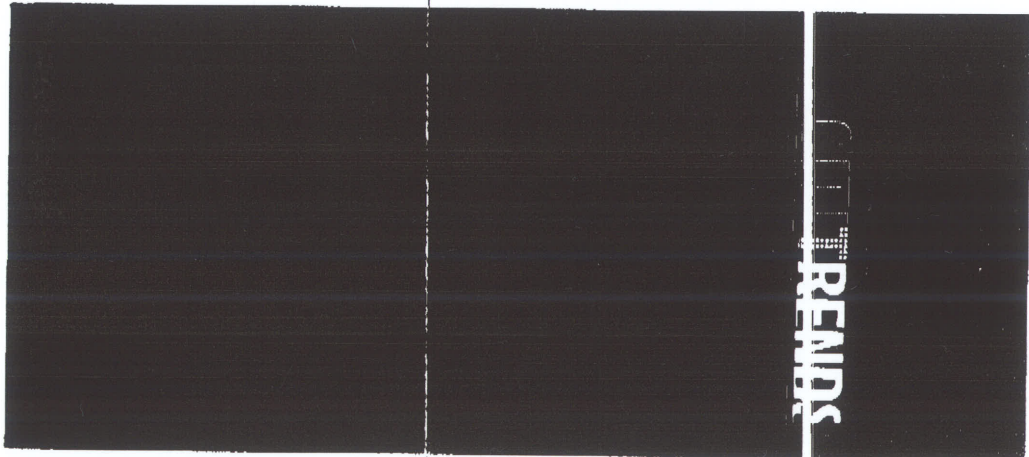
Revision 2 5/2/11

Job summary: - one exterior building / one inside mall sign
- One roadside pylon



Supply and install new graphics on existing
double sided pylon:
(replace faces only if necessary)

- 9' high x 20' wide
- 9 year translucent vinyl graphics.



Citi Trends Store # 285
Miller Park Mall
211 N. West Av.
El Dorado, AR 71730



brandrite
SIGN COMPANY

803-533-7446
331 John C Galbraith Drive
Orangeburg SC 29115
Linford Oberholzer
lin@brandritesign.com
Mobile 803-707-4512